

SUPERVISORS PLAT OF TIMBERS SKY HARBOR

PARTS OF GOV'T LOTS 1 & 2 SEC. 32 T. 24 N. R. 5 E.
PLAINFIELD TWP. IOSCO CO. MICH

DEDICATION

KNOW ALL MEN BY THESE PRESENTS, That I, George Webb, Supervisor of the Township of Plainfield of Iosco County, State of Michigan, by virtue of authority in me vested by Section 51, Act 172, of 1929, having been duly authorized by the TOWNSHIP BOARD OF PLAINFIELD, have caused the land described in the annexed plat to be surveyed, laid out and platted, to be known as SUPERVISOR'S PLAT OF TIMBERS SKY HARBOR, Parts of Gov't Lots 1 & 2, Sec. 32, T. 24 N., R. 5 E., PLAINFIELD TWP., IOSCO CO., MICH; and that the streets and alleys as shown on said plat are now being used for such purposes.

John C. Miller (Witness) *George Webb* (Seal)
Supervisor of the township of Plainfield

Ivan Miller (Witness)

ACKNOWLEDGMENT

STATE OF MICHIGAN }
County of Iosco } ss.

On this 2nd day of August, A.D. 1952, before me, a Notary Public in and for said county, personally came the above named George Webb, Supervisor of Township of PLAINFIELD, known to me to be the person who executed the above dedication, and acknowledged the same to be his free act and deed as such SUPERVISOR.

Dennis B. Chrivia
Dennis B. Chrivia
Notary Public in and for Iosco County.
My Commission expires April 2, 1955

DESCRIPTION OF LAND PLATTED

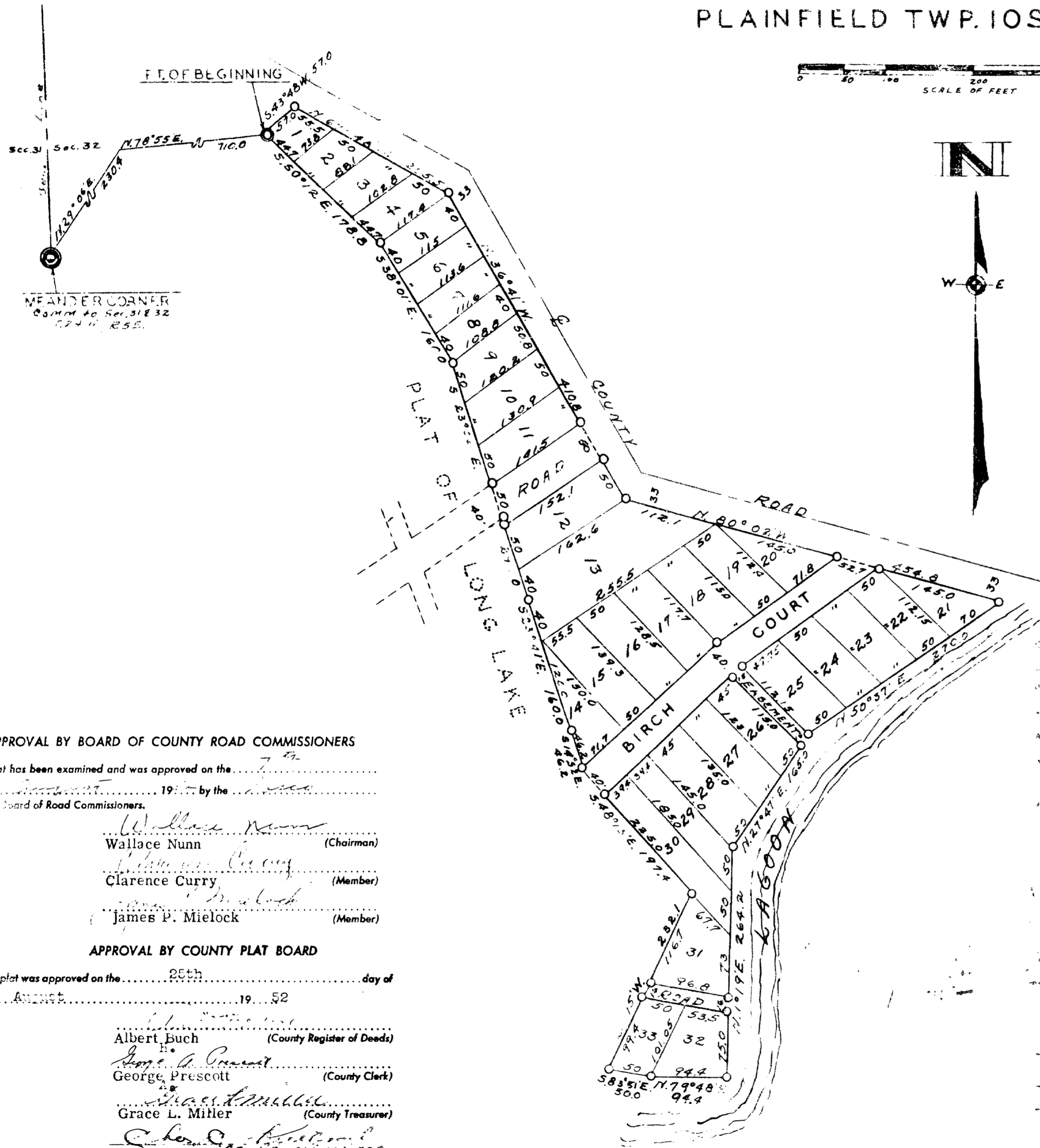
The land embraced in the annexed plat of SUPERVISOR'S PLAT OF TIMBERS SKY HARBOR, PARTS OF GOV'T LOTS 1 & 2, SEC. 32, T. 24 N., R. 5 E., PLAINFIELD TWP., IOSCO CO., MICH, is described as follows: Beginning at a Point N. 29° 06' E. 230.4 ft., and N. 78° 55' E. 710.0 ft. from the Meander Post on the Sec. Line Common to Sections 31 & 32 T. 24 N., R. 5 E., Plainfield Twp., Iosco Co., Mich. Running thence S. 50° 12' E. 178.8 ft., thence S. 38° 01' E. 160.0 ft., thence S. 23° 06' E. 290.0 ft., thence S. 23° 41' E. 160.0 ft., thence S. 14° 52' E. 46.2 ft., thence S. 48° 15' E. 197.4 ft., thence S. 21° 15' W. 232.1 ft., thence S. 83° 51' E. 50.0 ft., thence N. 79° 48' E. 94.4 ft., thence N. 1° 19' E. 264.2 ft., thence N. 27° 47' E. 165.0 ft., thence N. 50° 37' E. 270.0 ft., thence N. 80° 02' W. 454.8 ft., thence N. 36° 41' W. 410.8 ft., thence N. 67° 48' W. 205.5 ft., thence S. 43° 48' W. 57.0 ft., to Point of Beginning.

Note: All dimensions are given in feet and decimals thereof.

SURVEYOR'S CERTIFICATE

I hereby certify that the plat hereon delineated is a correct one and that permanent metal monuments consisting of bars not less than one-half inch in diameter and 48 inches in length, or shorter bars of not less than one-half inch in diameter lapped over each other at least 6 inches with an over-all length of not less than 48 inches, encased in a concrete cylinder at least 4 inches in diameter and 48 inches in depth have been placed at points marked thus (.....0) as thereon shown at all angles in the boundaries of the land platted, at all the intersections of streets, intersections of alleys, or of streets and alleys, and at the intersections of streets and alleys with the boundaries of the plat as shown on said plat.

John C. Miller
Registered Land Surveyor or Registered Professional Engineer
John C. Miller



APPROVAL BY BOARD OF COUNTY ROAD COMMISSIONERS

This plat has been examined and was approved on the 7th day of August, 1952, by the Board of Road Commissioners.

Wallace Nunn (Chairman)
Clarence Curry (Member)
James P. Mielock (Member)

APPROVAL BY COUNTY PLAT BOARD

This plat was approved on the 25th day of August, 1952.

Albert Buch (County Register of Deeds)
George Prescott (County Clerk)
Grace L. Mitler (County Treasurer)

MUNICIPAL APPROVAL

This plat was approved by the Township Board of the Township of Plainfield of a meeting held August 2, 1952.

Dennis Chrivia (Clerk)