

# SUPERVISOR'S PLAT OF TIMBERED SHORES

A subdivision of parts of Lots 2, 3 and 4 sec 9, T.24N.R.5E, Plainfield Twp.  
 Insc County, Michigan.  
 Surveyed July, 1919.  
 Scale 200 feet = 1 inch.  
 Scale of Feet:

## DESCRIPTION OF LAND PLATED

The land embraced in the annexed plat of TIMBERED SHORES, a subdivision of parts of Gov't. Lots 2, 3, and 4 of Section 9, Township 24 North, Range 5 East, Plainfield Township, Insc County, Michigan.

Beginning at the S.W. corner of Lot 4, Section 9, T.24 N., R. 5 E. (This also being the N.W. corner of Supervisor's Plat of First Addition to Jose Lake Resort, a subdivision of Gov't. Lot 3 and part of Gov't. Lot 2 of Section 16, T. 24 N., R. 5 E., Plainfield Twp., Insc County, Michigan) thence Along North boundary of said Supervisor's Plat of First Addition to Jose Lake Resort, S. 87° 45' E. 480.5 ft., thence along shore of Jose Lake N. 84° 34' E. 209 ft., thence East 662 ft., thence N. 58° 05' E. 448.9 ft., thence N. 74° 02' E. 680 ft., thence N. 58° 15' E. 700 ft., to the S. E. corner of the subdivision, thence N. 16° 30' W. 450.5 ft., to NE corner of Subdivision, thence S 56° 17' W. 790 ft., thence S. 74° 02' W. 680 ft., thence S. 30° 05' W. 438 ft., thence N. 87° 45' W. 1196.6 ft. to NW corner of Subdivision, thence S 20° 15' W. 479.3 ft. to point of beginning.

Note: All lots bordering on lake are to run to the water.  
 Bearings of lines on this plat are based on compass bearings and transits angles. Compass bearings are magnetic.  
 Dimensions are in feet and decimals thereof.

## SURVEYOR'S CERTIFICATE

I hereby certify that the plat herein delineated is a correct one and that permanent metal monuments consisting of bars not less than one half inch in diameter and 48 inches in length or other bars of not less than half inch in diameter spaced one inch apart at least 8 inches with an over all length of not less than 48 inches, secured in a concrete cylinder at least 4 inches in diameter and 48 inches in depth have been placed at points marked thus: (C) ... (as thereon shown) at all angles in the boundaries of the land platted, at all the intersections of streets, intersections of alleys, or of streets and alleys, and at the intersections of streets and alleys with the boundaries of the plat as shown on said plat.

*Carl E. Small*  
 Registered Land Surveyor for Professional Engineers  
 Carl E. Small

## APPROVAL BY BOARD OF COUNTY ROAD COMMISSIONERS

This plat has been examined and was approved on the ... day of ... 1919 by the ... County Board of Road Commissioners.  
*Ernest Greig*  
*Charles Small*  
*Blaine Hillis*  
*Robert A. ...*

## DEDICATION

KNOW ALL MEN BY THESE PRESENTS, that I, *Glenn T. Gelin*, Supervisor Township of Plainfield, Insc County, Michigan, by virtue of authority as me vested by Section 31, Act 172, of 1929, having been duly authorized by the Township Board, Township of Plainfield, Insc County, Michigan, have caused the land described in the annexed plat to be surveyed, laid out and platted to be known as Supervisor's Plat of Timbered Shores, a subdivision of parts of Lots 2, 3, and 4, Sec. 9, T.24N.R.5E, Plainfield Twp., Insc County, Michigan,

and that the streets and alleys as shown on said plat are now being used for such purposes.  
*Glenn T. Gelin*  
 Supervisor of the Township  
*Carl E. Small*  
 C. E. Small

## MUNICIPAL APPROVAL

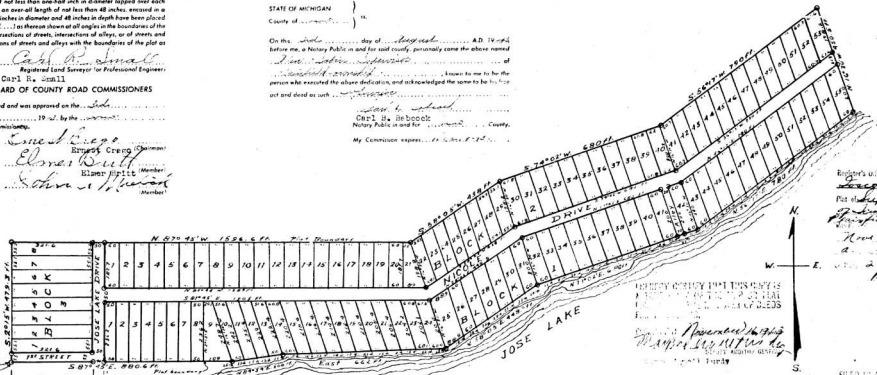
This plat was approved by the Township Board of the Township of Plainfield, Insc County, Michigan, at a meeting held July 21, 1919.  
*H. S. Townsend*  
 H. S. Townsend (Clk)

## APPROVAL BY COUNTY BOARD

This plat was approved on the 3rd day of August, 1919.  
*William Linn*  
*William Linn*  
*William Linn*  
*William Linn*  
 Grace L. Miller (Clerk)

## ACKNOWLEDGMENT

STATE OF MICHIGAN  
 County of Insc  
 On this ... day of ... A.D. 1919, before me, a Notary Public in and for said county, personally appeared the above named ...  
 My Commission expires ...



Engineer's Note  
 This plat was prepared by *A. M. Keight*  
 A. M. Keight  
 Registered Professional Engineer  
 Insc County, Michigan

Examined and Approved  
 November 10, 1919  
*William Linn*  
 William Linn  
 County Board of Road Commissioners

RECEIVED AT THE REGISTER'S OFFICE  
 November 10, 1919  
*William Linn*  
 William Linn  
 County Board of Road Commissioners