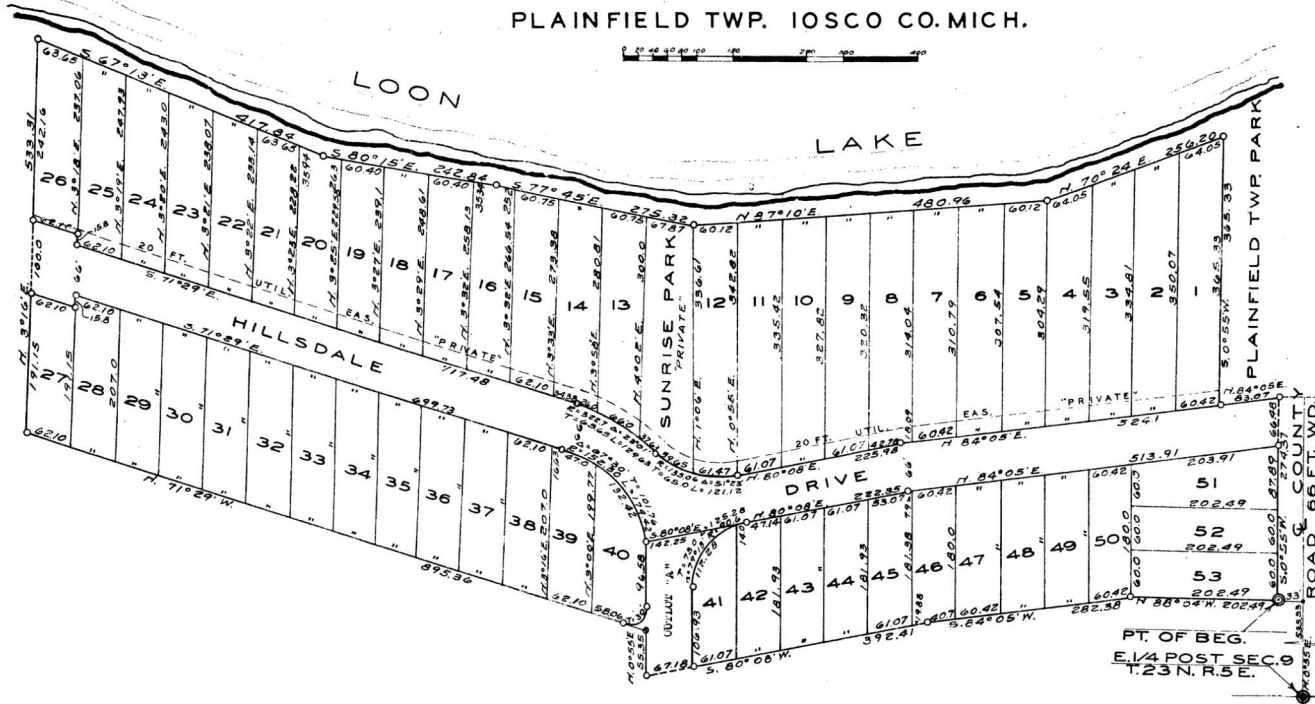


THE PALISADES

A SUBDIVISION OF PART OF GOVERNMENT LOTS 1 & 2 OF SECTION 9, T.23 N. R.5 E.
PLAINFIELD TWP. IOSCO CO. MICH.



DESCRIPTION OF LAND PLATTED

The land embraced in the annexed plat of THE PALISADES.....
 A Subdivision of part of Government Lots 1 & 2 of
 Section 9, T.23 N. R.5 E., Plainfield Twp., Iosco
 Co., Mich., containing Lots 1. to 53. ion. & SUNRISE PARK
 is described as follows:
 Beginning at a point N.0°55'E. 535.53 ft; and
 N.33°04'W. 57.0 ft. from the E.1/4 post of section
 9, T.23 N. R.5 E., Michigan, running thence N.89°04'W.
 202.49 ft; thence S.84°05'W. 292.38 ft; thence
 S.80°08'W. 392.41 ft; thence N.0°55'E. 55.35 ft; thence
 N.71°29'W. 295.36 ft; thence N.91°15'E. 535.31 ft;
 thence S.07°12'E. 417.84 ft; thence S. 80°15'E. 242.34
 ft; thence S.77°45'E. 275.32 ft; thence N.87°10'E.
 480.96 ft; thence N.70°24'E. 256.20 ft; thence
 S.0°55'W. 365.33 ft; thence N.84°05'E. 85.07 ft;
 thence S.0°55'W. 274.37 ft. to point of beginning.
 NOTE: All dimensions are given in feet and decimals
 thereof.
 NOTE: All public utility easements marked private
 on the plat shall be in accordance with Act
 131, Public Acts of 1953 as amended.
 NOTE: All lots bordering on the Lake extend to the
 waters edge

39996