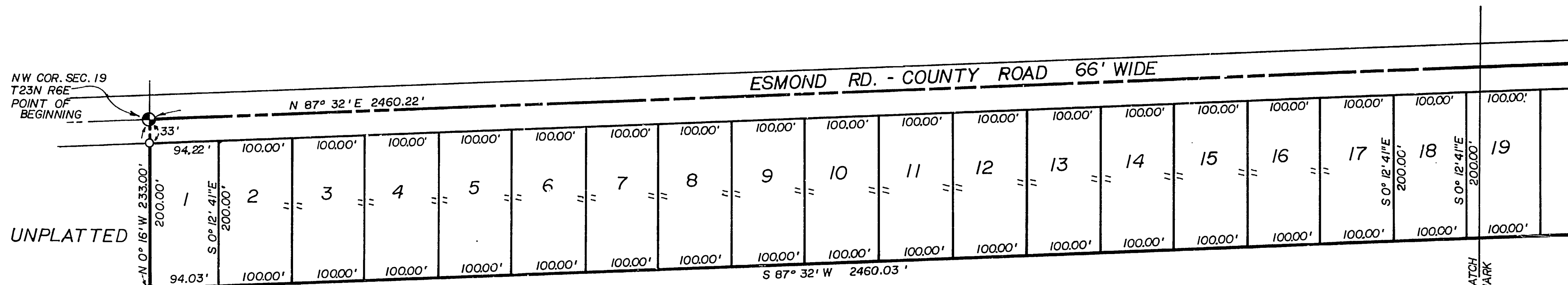


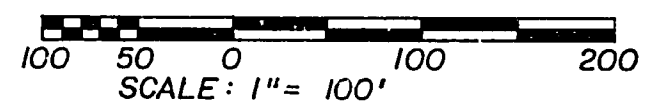
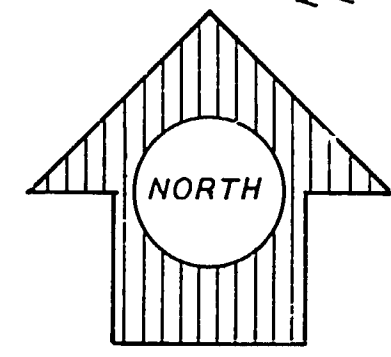
# SMITH CREEK SUBDIVISION NO. 1

A SUBDIVISION OF PART OF THE NW¼ OF SECTION 19, T.23N-R.6E.  
PLAINFIELD TOWNSHIP, IOSCO COUNTY,  
MICHIGAN



UNPLATTED

UNPLATTED



**PROPRIETOR'S CERTIFICATE**  
We, as proprietor certify that we caused the land embraced in this plat to be surveyed, divided, mapped and dedicated as represented on this plat and that the road shown on the plat, Esmond Road, is for the use of the public; that the public utility easements are private easements and that all other easements are for the uses shown on the plat.

Witness  
Dennis B. Chrivia  
DENNIS B. CHRIVIA  
Marion J. Swantek  
Marion J. Swantek 6237 Esmond Rd  
Hale, Michigan 48739  
Altora Chrivia  
ALTORA CHRIVIA  
Margaret M. Swantek  
Margaret M. Swantek 6237 Esmond Rd  
Hale, Michigan 48739

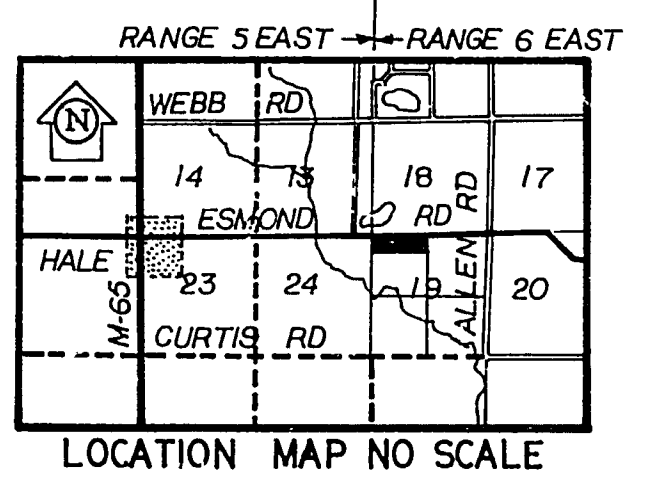
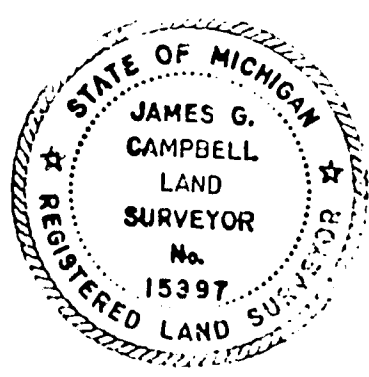
**ACKNOWLEDGEMENTS**  
State of Michigan )  
Iosco County ) S.S.

Personally came before me this 7th day of Dec, 1970, the above named Marion J. Swantek, and Margaret M. Swantek his wife, to me known to be the persons who executed the foregoing instrument and acknowledged that they executed the same as their free act and deed. (Notary Seal)  
Notary Public Dennis B. Chrivia Iosco County, Michigan  
My commission expires July 2, 1971

**SURVEYOR'S CERTIFICATE.**  
I, James G. Campbell, surveyor, certify:  
That I have surveyed, divided and mapped the land shown on this plat, described as follows: SMITH CREEK SUBDIVISION NO. 1, a subdivision of part of the NW¼ of Section 19, T23N R6E, Plainfield Township, Iosco County, Michigan, commencing at the NW corner of said Section 19, which is the point of beginning, thence North 87° 32' East along the North line of said section 2460.22 feet to the North ¼ corner thereof, thence South 0° 12' 41" East along the North-South ¼ line 233.00 feet, thence South 87° 32' West 2460.03 feet to the West line of said section, thence North 0° 16' West along said West section line 233.00 feet to the point of beginning; containing Lots 1 through 24 and Outlot A.  
That I have made such survey, land-division and plat by the direction of the owners of such land.  
That such plat is a correct representation of all the exterior boundaries of the land surveyed and the subdivision of it.  
That the required monuments and lot markers have been located in the ground or that surety has been deposited with the municipality, as required by section 125 of the act.  
That the accuracy of survey is within the limits required by section 126 of the act.  
That the bearings shown on the plat are expressed as required by section 126(3) of the act and as explained in the legend.

DEC. 7, 1970

James G. Campbell  
James G. Campbell R.L.S. 15397  
304 W. Lincoln St East Tawas, 48730

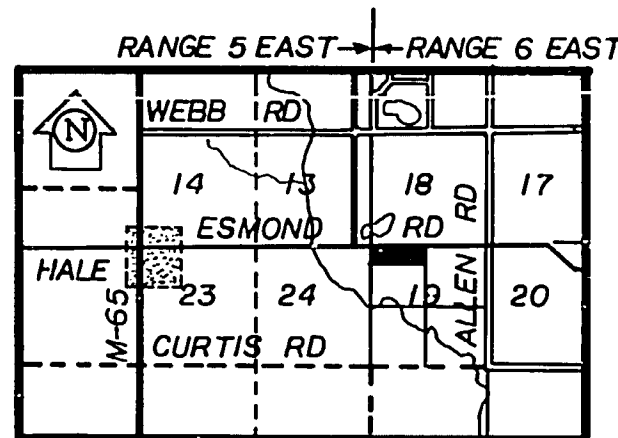
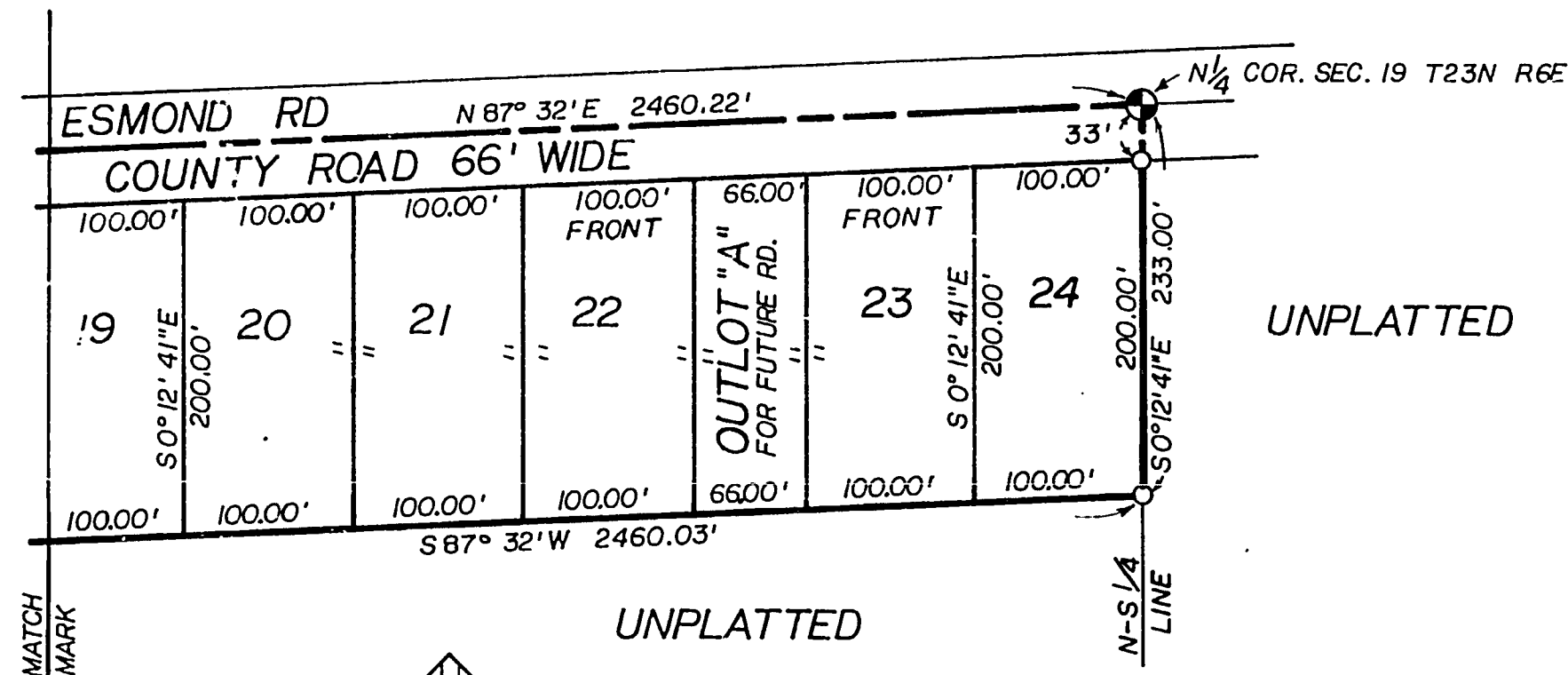


- LEGEND**
- All dimensions are in feet.
  - Concrete monuments have been placed at all points marked O.
  - Lot corners have been marked with 1/2" iron pipe 24" long.
  - Bearings were established from Gov't Land Office resurvey notes - 1933.

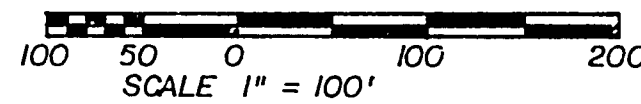
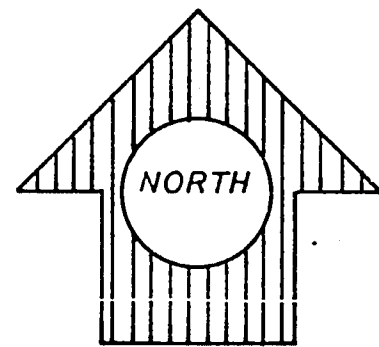
52147

# SMITH CREEK SUBDIVISION NO. 1

A SUBDIVISION OF PART OF THE NW¼ OF SECTION 19, T23N-R6E  
PLAINFIELD TOWNSHIP, IOSCO COUNTY,  
MICHIGAN



- LEGEND**
1. All dimensions are in feet.
  2. Concrete monuments have been placed at all points marked O.
  3. Lot corners have been marked with 1/2" iron pipe 24" long.
  4. Bearings were established from Gov't Land Office resurvey notes - 1933.



**COUNTY TREASURER'S CERTIFICATE**

The records in my office show no unpaid taxes or special assessments for the five years preceding DEC 8, 70 involving the lands included in this plat.

Edward J. Melkie  
Edward J. Melkie, County Treasurer  
Iosco County, Michigan

**COUNTY DRAIN COMMISSIONER'S CERTIFICATE**

Approved on DEC 8 1970 as complying with Section 192 of Act 288, P.A. 1967 and the applicable rules and regulations published by my office in the County of Iosco.

John A. Mielock  
John A. Mielock, Drain Commissioner

**CERTIFICATE OF COUNTY ROAD COMMISSIONERS**

Approved on DEC 8 1970 as complying with Section 183 of Act 288, P.A. 1967 and the applicable published rules and regulations of the Board of Road Commissioners of Iosco County.

Clarence Curry Henry M. Conley  
Clarence Curry, Member Henry M. Conley, Member

A. J. Aulerich  
A. J. Aulerich, Chairman

**CERTIFICATE OF MUNICIPAL APPROVAL**

I certify that this plat was approved by the Township Board of the Township of Plainfield, at a meeting held DEC 8, 1970 and was reviewed and found to be in compliance with Act 288, P.A. 1967. Plat was approved by District Health Unit No. 2 DEC 7, 1970

Frances I. Bose  
FRANCES I. BOSE, Township Clerk

**COUNTY PLAT BOARD CERTIFICATE**

This plat has been reviewed and is approved by the Iosco county plat board on March 26 1971 as being in compliance with all of the provisions of Act 288, P.A. 1967, and the plat board's applicable rules and regulations.

Certified true copy of recorded plat.

Allison Green  
ALLISON GREEN  
STATE TREASURER  
By Richard E. Lomas  
Richard E. Lomas - Plat Examiner  
May 10, 1971

Albert H. Bush  
Albert H. Bush, Register of Deeds  
D. Keith Papas  
D. Keith Papas, County Clerk  
Edward J. Melkie  
Edward J. Melkie, County Treasurer

**RECORDING CERTIFICATE**

State of Michigan  
Iosco County

This plat was received for record on the 4 day of May A.D. 19 71 at 11:04 A. M. recorded in Liber 13 of Plats on Page 44-45.

Albert H. Bush  
Albert H. Bush, Register of Deeds