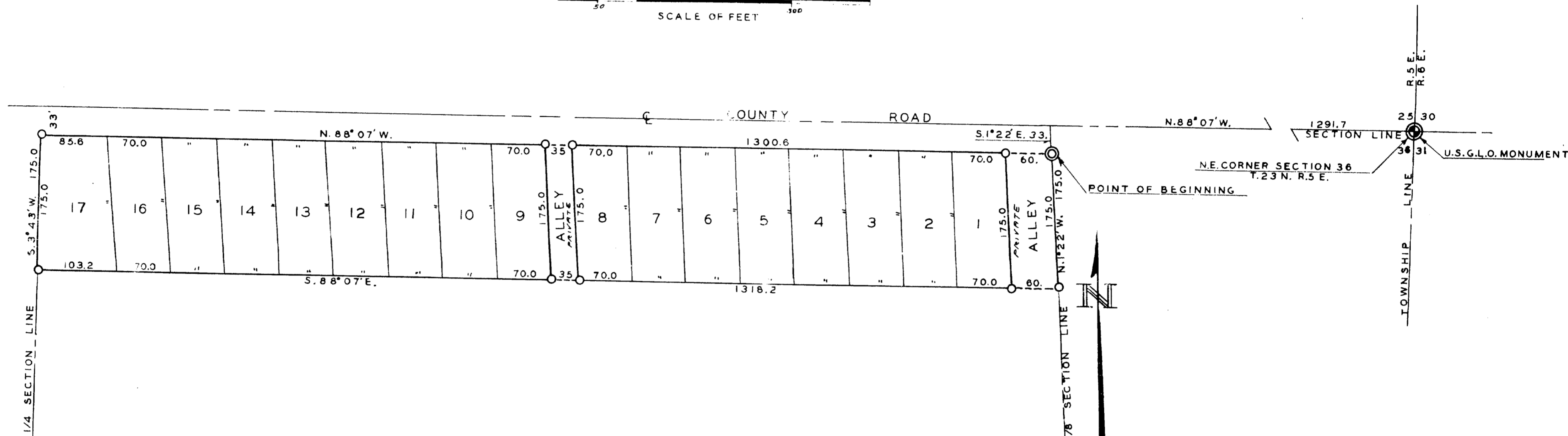


THE RYE FIELD

A SUBDIVISION OF PART OF THE N.W. 1/4 N.E. 1/4 SEC. 36 T.23N. R.5E.
PLAINFIELD TWP. IOSCO CO. MICH.



DEDICATION

KNOW ALL MEN BY THESE PRESENTS, that we, Cecil A. Weiker and Marietta R. Weiker, his wife and Gilbert R. Hunt and Marie L. Hunt, His wife, as proprietors, have caused the land embraced in the annexed plat to be surveyed, laid out and platted, to be known as THE RYE FIELD, a subdivision of part of the N.W. 1/4 N.E. 1/4 Section 36, T23N, R5E, Plainfield Twp., Iosco Co., Michigan as shown on said plat and that the streets

hereby dedicated to the use of the property owners only

Signed and Sealed in the Presence of:
Cecil A. Weiker (L.S.)
Marietta R. Weiker (L.S.)
Gilbert R. Hunt (L.S.)
Marie L. Hunt (L.S.)
 (Witness) TREO. J. BARNHART

ACKNOWLEDGMENT

STATE OF MICHIGAN }
 County of Saginaw } ss.
 On this 21 day of January, 1954, before me, a Notary Public in and for said County, personally came the above named Cecil A. Weiker, Marietta R. Weiker, Gilbert E. Hunt and Marie L. Hunt known to me to be the persons who executed the above dedication, and acknowledged the same to be their free act and deed.
Treo J. Barnhart
 Notary Public, Saginaw County
 My Commission expires 1956

DESCRIPTION OF LAND PLATTED

The land embraced in the annexed plat of THE RYE FIELD, a subdivision of part of the N.W. 1/4 N.E. 1/4 Sec. 36, T23N, R5E, Plainfield Twp., Iosco Co., Michigan is described as follows: Beginning at a point N. 88° 07' W. 1291.7 ft. and S. 1° 22' E. 33.0 ft. from the N.E. corner Sec. 36, T23N, R5E, Michigan; Running thence N. 88° 07' W. 1300.6 ft; thence S. 3° 43' W. 175.0 ft; thence S. 88° 07' E. 1318.2 ft; thence N. 1° 22' W. 175.0 ft. to point of beginning. NOTE: All demensions are given in feet and decimals thereof. All bearings are based on a Magnetic reading and transit angles computed therefrom.

APPROVAL BY BOARD OF COUNTY ROAD COMMISSIONERS

This plat has been examined and was approved on the 21 day of January, 1954 by the Iosco County Board of Road Commissioners,
Clarence Curry (Chairman)
Wallace D. Nunn (Member)
James P. Mielock (Member)

APPROVAL BY COUNTY PLAT BOARD

This plat was approved on the 21 day of January, 1954
Albert H. Buch (County Register of Deeds)
George A. Prescott (County Clerk)
Grace L. Miller (County Treasurer)

SURVEYOR'S CERTIFICATE

I hereby certify that the plat hereon delineated is a correct one and that permanent metal monuments consisting of bars not less than one-half inch in diameter and 48 inches in length, or shorter bars of not less than one-half inch in diameter lapped over each other at least 6 inches with an over-all length of not less than 48 inches, encased in a concrete cylinder at least 4 inches in diameter and 48 inches in depth have been placed at points marked thus (.....) as thereon shown at all angles in the boundaries of the land platted, at all the intersections of streets, intersections of alleys, or of streets and alleys, and at the intersections of streets and alleys with the boundaries of the plat as shown on said plat.

Registered Land Surveyor or Registered Professional Engineer
John C. Miller

MUNICIPAL APPROVAL

This plat was approved by the Plainfield Township Board of the Plainfield Township of Plainfield at a meeting held Jan. 21, 1954
Dennis B. Chrvia (Clerk)

COUNTY TREASURER'S CERTIFICATE

Office of County Treasurer, Iosco County.
 I hereby certify, that there are no tax liens or titles held by the State on the lands described hereon, and that there are no tax liens or titles held by individuals on said lands, for the five years preceding the 21 day of January, 1954, and that the taxes for said period of five years are all paid, as shown by the records of this office.
 This certificate does not apply to taxes, if any, now in process of collection by township, city or village collecting officers.
Grace L. Miller (County Treasurer)

I hereby certify that this copy is a true copy of the map or plat forwarded the Register of Deeds as recording.
 Date Jan 21 1954
 Examined and Approved:
John B. Doster PLAT ENGINEER

COPY
 Register's Office
 County Iosco
 Plat of THE RYE FIELD
 was returned to me Jan 21 1954
 by Grace L. Miller
 Page 1

50769