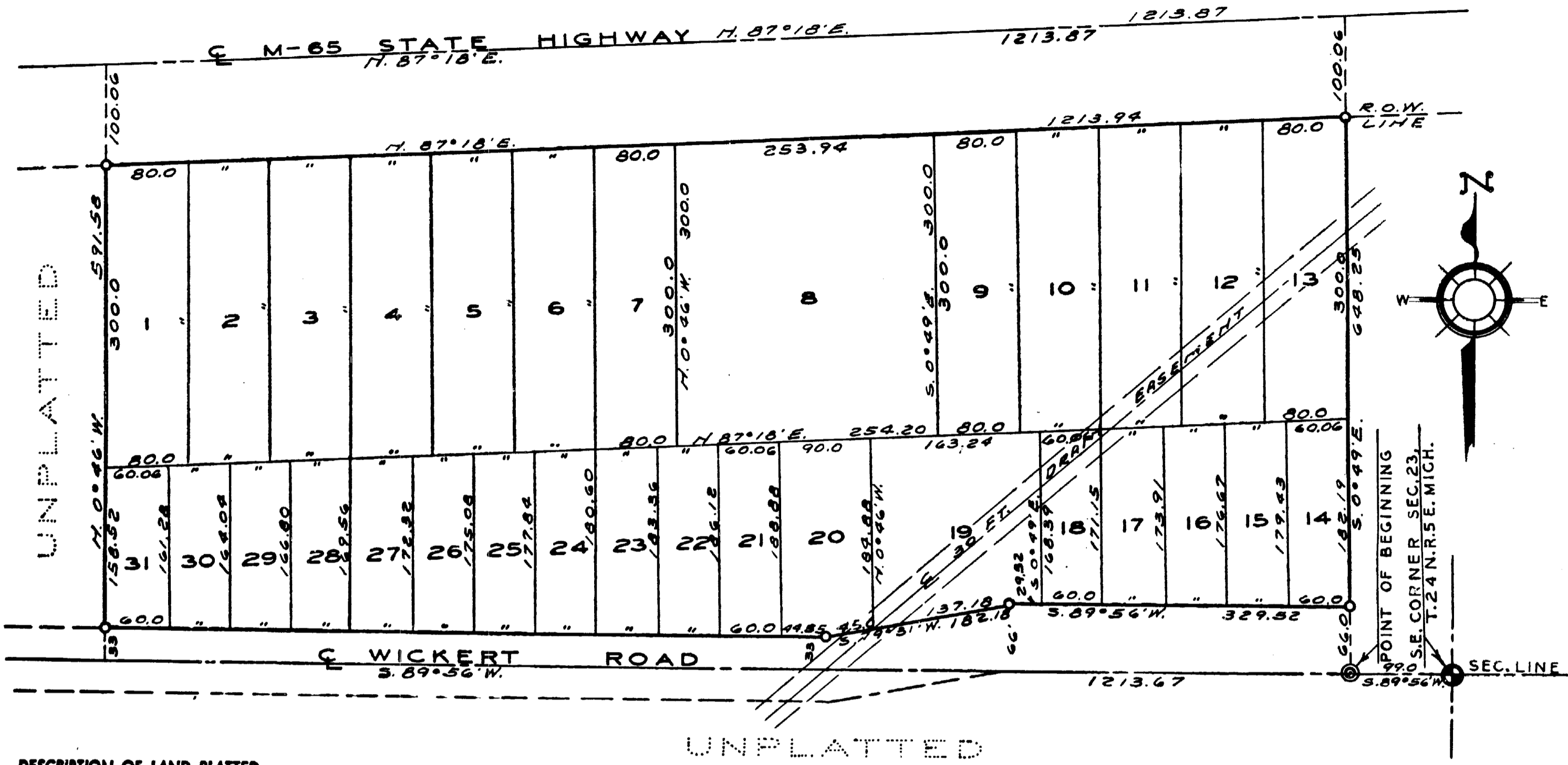


PLAINFIELD RIDGE

A SUBDIVISION OF PART OF THE S.E. 1/4, S.E. 1/4, SEC. 23, T. 24 N. R. 5 E.
PLAINFIELD TWP. IOSCO CO. MICH.



DESCRIPTION OF LAND PLATTED

The land embraced in the annexed plat of "PLAINFIELD RIDGE" is a subdivision of part of the S.E. 1/4, S.E. 1/4, Sec. 23, T. 24 N. R. 5 E., Plainfield Twp., Iosco Co., Mich., containing lots numbered 1 to 31 inclusive. Beginning at a point S. 89° 56' W., 99.0 ft. from the S.E. corner of section 23, T. 24 N. R. 5 E. Michigan running thence S. 89° 56' W., 1213.67 ft.; thence N. 0° 46' W., 591.58 ft.; thence N. 87° 18' E., 1213.87 ft.; thence S. 0° 49' E., 648.25 ft. to the point of beginning.

NOTE: All dimensions are given in feet and decimals thereof.

SURVEYOR'S CERTIFICATE

I hereby certify that the plat hereon delineated is a correct one and that permanent metal monuments consisting of bars not less than one-half inch in diameter and 36 inches in length, or shorter bars of not less than one-half inch in diameter lapped over each other at least 6 inches with an over-all length of not less than 36 inches, encased in a concrete cylinder at least 4 inches in diameter and 36 inches in depth have been placed at points marked thus (O) as thereon shown at all angles in the boundaries of the land platted, at all the intersections of streets, intersections of alleys, or of streets and alleys, and at the intersections of streets and alleys with the boundaries of the plat as shown on said plat.

John C. Miller
Registered Land Surveyor Professional Engineer
John C. Miller

COUNTY TREASURER'S CERTIFICATE

Office of County Treasurer, Iosco County. I hereby certify, that there are no tax liens or titles held by the State on the lands described hereon, and that there are no tax liens or titles held by individuals on said lands, for the five years preceding the day of 1962 and that the taxes for said period of five years are all paid, as shown by the records of this office.

This certificate does not apply to taxes, if any, now in process of collection by township, city or village collecting officers.

C.O.P.Y. Grace L. Miller (County Treasurer)

Register's Office Iosco Co. Mich.

Plainfield Ridge
2 rd
63-10-00
Jan 11 at plots
9
Albert H. Buch

This plat was approved by the Township Board of the Township of Plainfield on a meeting held Sept 12, 1962 and is in compliance with sec. 19a.

December 31, 1962
January 8, 1963
December 31, 1962

Richard E. Loney
Richard E. Loney, Pl. Registrar

APPROVAL BY COUNTY PLAT BOARD

This plat was approved on the 28th day of November 1962 by the Iosco County Plat Board

Albert H. Buch (County Register of Deeds)
George A. Prescott (County Clerk)
Grace L. Miller (County Treasurer)
E.H. Stickney (County Drain Commissioner)

APPROVAL BY BOARD OF COUNTY ROAD COMMISSIONERS

This plat has been examined and was approved on the 7th day of November 1962 by the Iosco County Board of Road Commissioners.

Clarence Curry (Chairman)
Wallace D. Nunn (Member)
Arthur J. Aulerich (Member)

CERTIFICATE AS TO STATE TRUNK LINE OR FEDERAL AID ROADS

We hereby certify that said plat appears to include land located on a state trunk line or federal aid road.

Albert H. Buch
George A. Prescott
Grace L. Miller (County Plat Board)

CERTIFICATE OF MUNICIPAL APPROVAL

This plat was approved by the Township Board of the Township of Plainfield on a meeting held Sept 12, 1962 and is in compliance with sec. 19a.

Dennis B. Chrvia Clerk.

DEDICATION

KNOW ALL MEN BY THESE PRESENTS, that we, Chester O. Bielby and Violet Bielby, his wife

as proprietors, have caused the land embraced in the annexed plat to be surveyed, laid out and platted, to be known as "PLAINFIELD RIDGE" A subdivision of Part of the S.E. 1/4, S.E. 1/4, Section 23, T. 24 N. R. 5 E., Plainfield Township, Iosco County Michigan

and that the Highway and Road as shown on said plat are hereby dedicated to the use of the public

Signed and Sealed in the Presence of:
Louis Bissanette (Witness) *Chester O. Bielby* (L.S.)
Bernice Bissanette (Witness) *Violet Bielby* (L.S.)

ACKNOWLEDGMENT

STATE OF MICHIGAN } ss.
County of Iosco }
On this 6th day of November 1962, before me, a Notary Public in and for said County, personally came the above named Chester O. Bielby and Violet Bielby, his wife known to me to be the persons who executed the above dedication, and acknowledged the same to be their free act and deed.
Louis Bissanette
Notary Public, Iosco County
My Commission expires Nov. 5, 1965.

APPROVED 12-7-62 DATE
John C. Mackie
STATE HIGHWAY COMMISSIONER