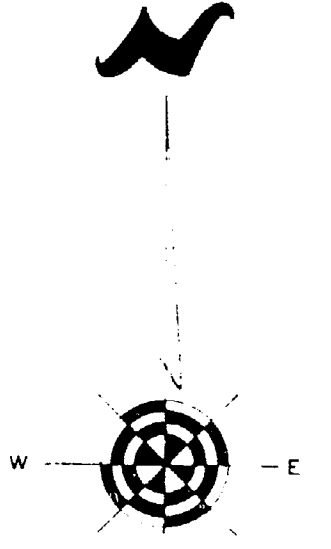
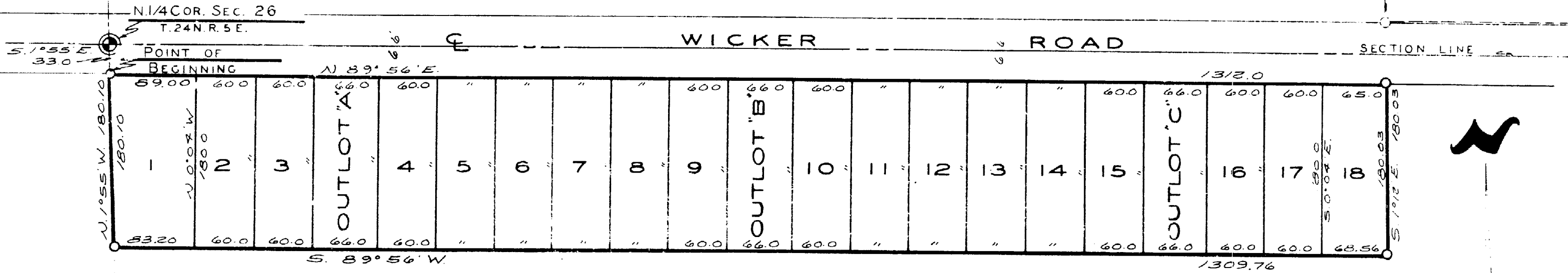


# "POPLAR KNOLL"

A SUBDIVISION OF PART OF THE N.W. 1/4 OF THE N.E. 1/4 OF SECTION 26, T.24 N.R.5 E.,  
PLAINFIELD TOWNSHIP, IOSCO COUNTY,  
MICHIGAN



PLAINFIELD  
RIDGE  
(A RECORDED PLAT)



### DEDICATION

KNOW ALL MEN BY THESE PRESENTS, that we... Frank Abbinante... and Hyacinth M. Abbinante, his wife, of Route 2, Hale, Michigan

as proprietors, have caused the land embraced in the annexed plat to be surveyed, laid out and platted, to be known as... "POPLAR KNOLL" A... subdivision of part of the N.W. 1/4 of the N.E. 1/4 of Section 26, T.24 N.R.5 E., Plainfield Township, Iosco County, Michigan

and that the Road as shown on said plat are hereby dedicated to the use of the Public

### APPROVAL BY BOARD OF COUNTY ROAD COMMISSIONERS

This plat has been examined and was approved on the... day of... 1966 by the Iosco County Board of Road Commissioners.

A. J. Kulovich (Chairman)  
Clarence Curry (Member)  
Robert W. LaVoy (Member)

### CERTIFICATE OF MUNICIPAL APPROVAL

This plat was approved by the Township Board of the Township of Plainfield at a meeting held... and is in compliance with Section 19a. and that the width of lots conform with the requirements of Section 30, Act 172, of 1929, as amended.

Shirla Vee Kesler Clerk

### APPROVAL BY COUNTY PLAT BOARD

This plat was approved on the... day of... 1966 by the Iosco County Plat Board

Albert H. Buch (County Register of Deeds)  
George A. Prescott (County Clerk)  
Grace L. Miller (County Treasurer)  
Richard L. Miller (County Drain Commissioner)

### COUNTY TREASURER'S CERTIFICATE

Office of County Treasurer, Iosco County. I hereby certify, that there are no tax liens or titles held by the State on the lands described hereon, and that there are no tax liens or titles held by individuals on said lands, for the five years preceding the... day of... 1966 and that the taxes for said period of five years are all paid, as shown by the records of this office.

This certificate does not apply to taxes, if any, now in process of collection by township, city or village collecting officers.

### SURVEYOR'S CERTIFICATE

I hereby certify that the plat hereon delineated is a correct one and that permanent metal monuments consisting of bars not less than one-half inch in diameter and 36 inches in length, or shorter bars of not less than one-half inch in diameter lapped over each other at least 6 inches with an over-all length of not less than 36 inches, enclosed in a concrete cylinder at least 4 inches in diameter and 36 inches in depth have been placed at points marked thus (O) as thereon, shown at all angles in the boundaries of the land platted, at all the intersections of streets, intersections of alleys, or of streets and alleys, and at the intersections of streets and alleys with the boundaries of the plat as shown on said plat.

Prepared and Drafted By: John C. Miller Registered Land Surveyor

John C. Miller County Court House Howell, Michigan

Signed and Sealed in the Presence of:  
Fred Holzheuer (Witness) Frank Abbinante  
Clive Holzheuer (Witness) Hyacinth M. Abbinante

### ACKNOWLEDGMENT

STATE OF MICHIGAN } ss.  
County of Iosco }  
On this... day of... 1966, before me, a Notary Public in and for said County, personally came the above named... Frank Abbinante and Hyacinth M. Abbinante, his wife, of Route 2, Hale, Michigan

known to me to be the persons who executed the above dedication, and acknowledged the same to be their free act and deed.  
Fred Holzheuer Iosco County  
My Commission expires...

### DESCRIPTION OF LAND PLATTED

The land embraced in the annexed plat of "POPLAR KNOLL" A subdivision of part of the N.W. 1/4 of the N.E. 1/4 of Section 26, T.24 N.R.5 E., Plainfield Township, Iosco County, Michigan is described as follows:

Commencing at the N.W. Corner of said N.W. 1/4, N.E. 1/4, thence S. 1055' E. 33.0 feet to the Point of Beginning; Thence N. 89°56' E. 1312.00 feet, thence S. 1012' E. 180.03 feet, thence S. 89°56' W. 1309.76 feet, thence N. 1055' W. 180.10 feet to the Point of Beginning; Containing Lots 1 through 18 inclusive and OUTLOTS A, B & C.

NOTE: All dimensions are given in feet and decimals thereof.

Register's Office  
County...  
was Recorded this... day of...  
A. D., 19... at... o'clock  
M. in Liber... of...  
on Page...  
Register of Deeds  
ORIGINAL ON FILE