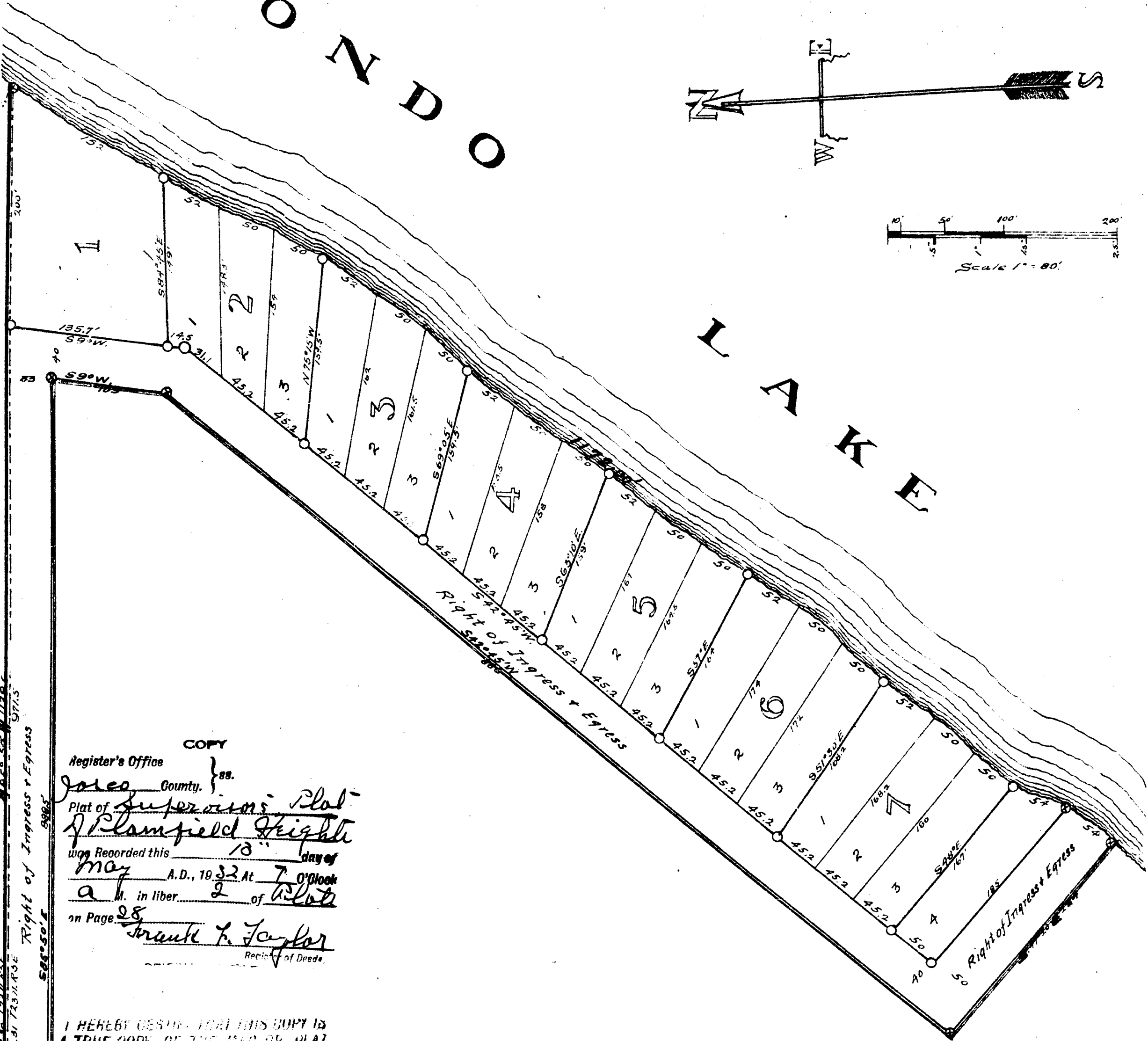
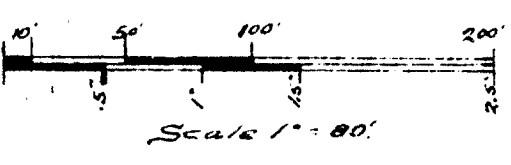
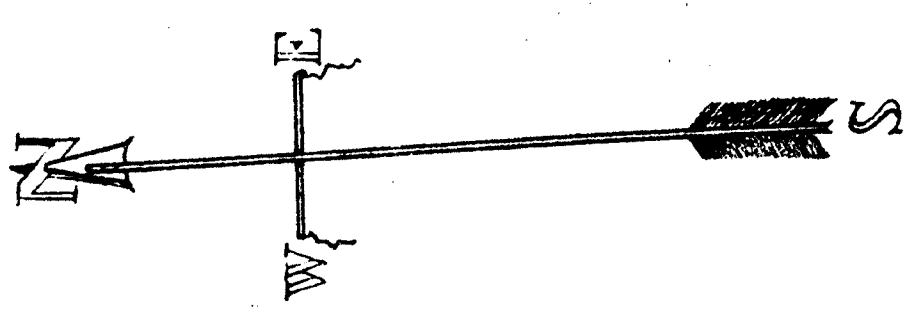


5-11-32

(And send Copy)

L O N D O



Examined and Approved
SUPERVISOR'S PLAT *May 12-1932*
J. B. Zauer
Deputy Auditor General
OF
PLAINFIELD HEIGHTS
PLAINFIELD TOWNSHIP
IOSCO COUNTY, MICHIGAN

Know All Men By These Presents,
That I Lewis Nunn, Supervisor of Plainfield Township, Iosco County, Mich., by virtue of authority in me vested by Sec. 51 Act 122 of P.A. Michigan 1929, having been authorized by the Township Board of the Township of Plainfield, Iosco County, Michigan, have caused the land in the annexed plat to be surveyed and platted, to be known as "Supervisor's Plat of Plainfield Heights, Plainfield Township, Iosco County, Mich. A Subdivision of Lot 3, Section 31, T23N, R5E, Michigan Meridian and that the roads shown on said plat have been acquired by user and easment for ingress and egress.
Signed and Sealed
in presence of
Edwin Thompson *Lewis Nunn (S)*
Muriel G. Greve Supervisor of Plainfield Township,
State of Michigan ss.
County of Iosco

Surveyor's Certificate.
I hereby certify that the plat hereon delineated is a correct one and permanent metal monuments not less than one inch in diameter placed in a concrete base have been placed at points marked thus at all angles in the boundary and at street intersections with the boundary of the land platted. All dimensions are given in feet and tenths of feet.
J. B. Lucas
Registered Surveyor.

CERTIFICATE OF MUNICIPAL APPROVAL.
This plat was approved by the Township Board, of the Township of Plainfield on the 7th day of November, A.D. 1931.
J. B. Lucas
Township Clerk.

CERTIFICATE OF APPROVAL BY COUNTY BOARD.
This plat was approved by the County Plat Board, of Iosco County, on the 31st day of January, A.D. 1931.
David Davis Judge of Probate
Frank E. Dan County Clerk
N. H. Knaut County Treasurer

On this 7th day of November, 1931 before me a Notary Public in and for said County personally appeared Lewis Nunn, Supervisor of Plainfield Township, Iosco County, Mich. known to me to be the person who made the above dedication and who acknowledged the same to be his free act and deed.
Sara Bromley Notary Public,
My Commission expires Jan. 6, 1932

Surveyor's Certificate (Supplementary)
I hereby certify that permanent metal monuments of not less than one inch in diameter and fifteen inches in length set in a concrete base not less than forty-eight inches in depth have been placed at all points marked thus on hereon shown at all angles in the boundaries of the land platted, at all intersections of streets, intersections of alleys or of streets and alleys and at the intersections of streets and alleys with the boundaries of the land platted as shown on said plat.
J. B. Lucas
Registered Surveyor.

Description of Land Platted.
Commencing at a point 33 feet east of the quarter section corner common to sections 30-31, T23N, R5E, Meridian of Michigan; Thence south 22 feet; Thence south 85° 50' East 898.5 feet; Thence 91° West 103 feet; Thence South 42° 15' West 886 feet; Thence south 47° 20' East 224 feet to the shore of Londo Lake (so called); Thence Northwesterly along the shore of said Lake 1,172 feet to the remainder corner on the section line between sections 30-31, T23N, R5E aforesaid; Thence west on said section line 1,385 feet to place of beginning. All measurements are given in feet and tenths thereof. The foregoing description of land platted comprises a part of Lot 3, Section 31, T23N, R5E.

COPY
Register's Office }
Iosco County, Mich.
Plat of *Supervisor's Plat of Plainfield Heights*
was Recorded this 18 day of *May*
A.D., 1932 At 7 o'clock
a.m. in Liber 2 of *Plats*
on Page 28
Frank T. Taylor
Register of Deeds.

I HEREBY CERTIFY THAT THIS COPY IS A TRUE COPY OF THE MAP OR PLAT FORWARDED THE REGISTER OF DEEDS FOR RECORDING.
COMPARED *May 12-1932*
J. B. Zauer
DEPUTY AUDITOR GENERAL.

FILED IN AUDITOR GENERAL'S OFFICE
May 14 1932
J. B. Zauer
DEPUTY AUDITOR GENERAL

25653

26833