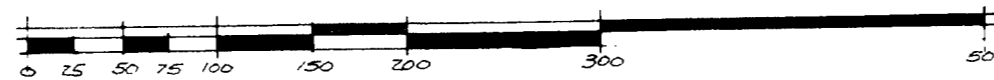


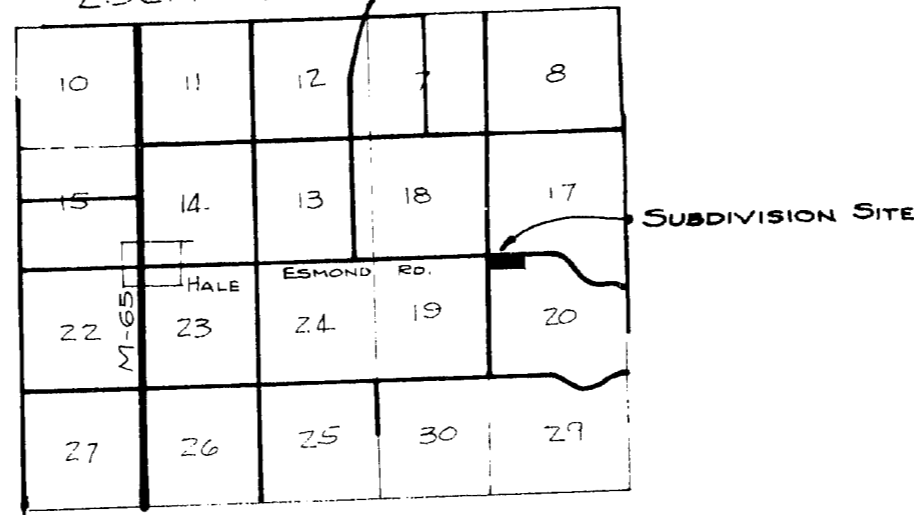
OAK FOREST

A SUBDIVISION OF PART OF THE N.W. 1/4, OF THE N.W. 1/4, SECTION 20,
T.23N.R.6E, PLAINFIELD TOWNSHIP, IOSCO COUNTY, MICHIGAN,

SCALE 1 INCH = 100 FEET



LOCATION SKETCH



SURVEYOR'S CERTIFICATE

I, Russell M. Small, Surveyor, certify:
That I have surveyed, divided and mapped the land shown on this plat described as follows: "OAK FOREST", a subdivision of part of the N. W. 1/4, of the N. W. 1/4, Section 20, T. 23 N., R. 6 E., Plainfield Township, Iosco County, Michigan, further described as: Beginning at the N. W. corner of Section 20, T. 23 N., R. 6 E., thence along the North line of Section 20, North 88° 07'00" E. 1329.14 feet, thence along the West 1/8 line South 0° 12'10" W. 666.17 feet, thence South 88° 04'00" West 1326.45 feet to the West line of Section 20, thence along the West line of Section 20 North 0° 01'50" W. 666.66 feet to the point of beginning. Containing Lots 1 through 15.

That I have made such survey, land-division and plat by the direction of the owners of said land.

That such plat is a correct representation of all the exterior boundaries of the land surveyed and the subdivision of it.

That the required monuments and lot markers have been located in the ground or that surety has been deposited with the municipality, as required by Section 125 of the Act.

That the accuracy of survey is within the limits required by Section 126 of the Act.

That the bearings shown on the plat are expressed as required by Section 126 (3) of the act and as explained in the Legend.

Date Sept 20, 1969

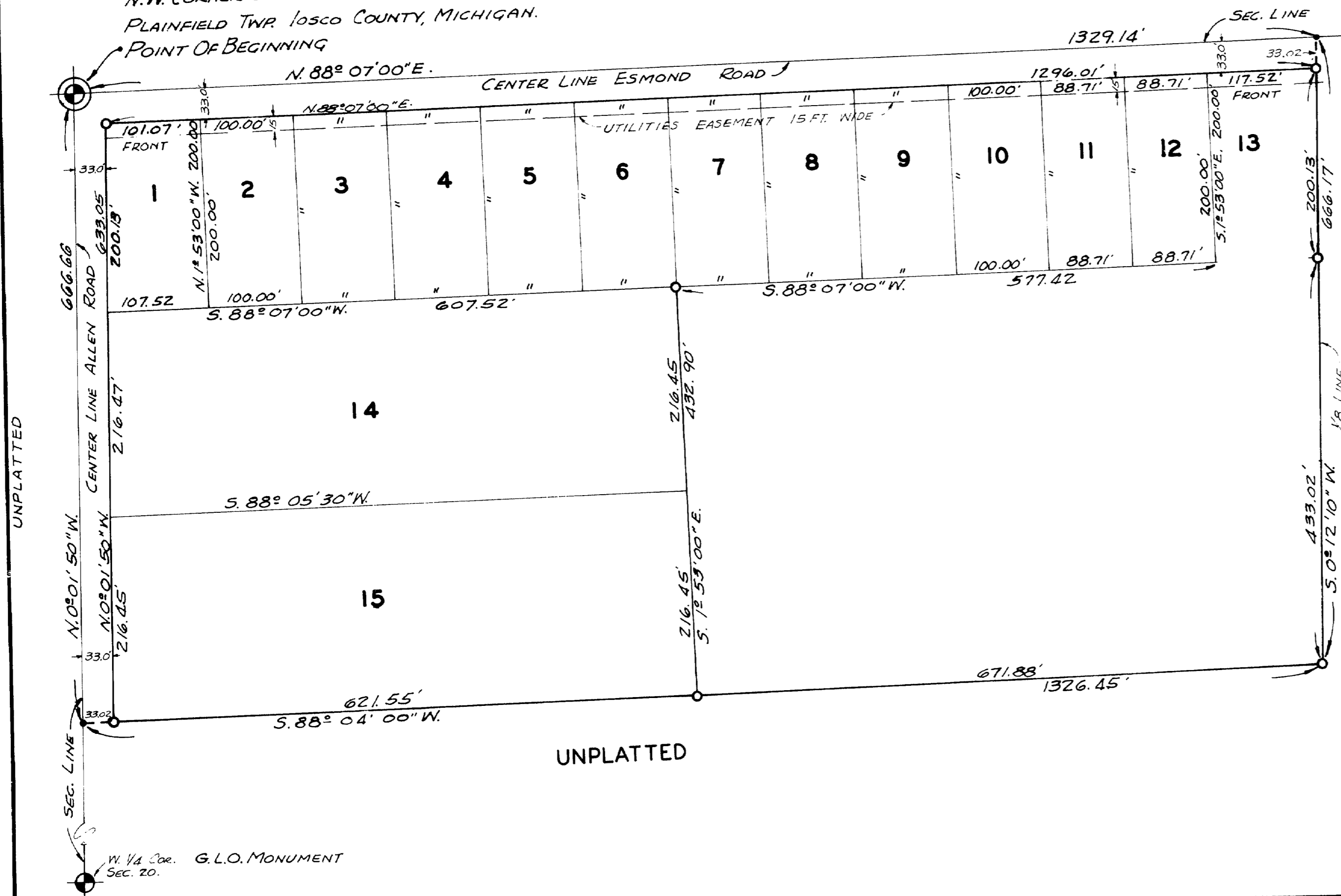
RUSSELL M. SMALL
Registered Land Surveyor
P. O. Box 213
East Tawas, Michigan 48730

Russell M. Small
Russell M. Small, Reg. No. 13598

UNPLATTED

G.L.O. MONUMENT
N.W. CORNER OF SECTION 20, T.23N.R.6E.
PLAINFIELD TWP. IOSCO COUNTY, MICHIGAN.
POINT OF BEGINNING

G.L.O. MONUMENT
N. 1/4 COR.
SEC. 20.



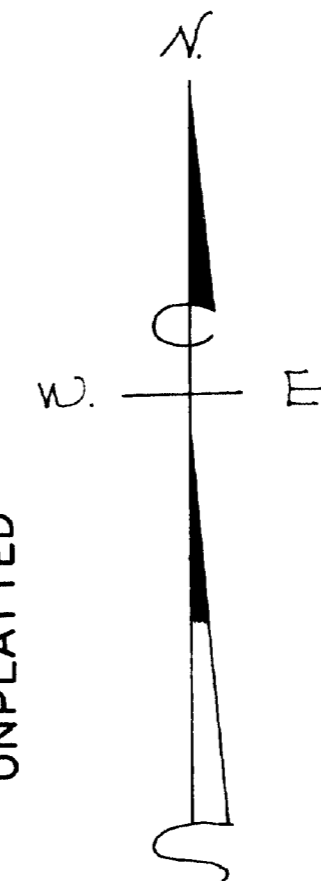
LEGEND

All dimensions are given in feet

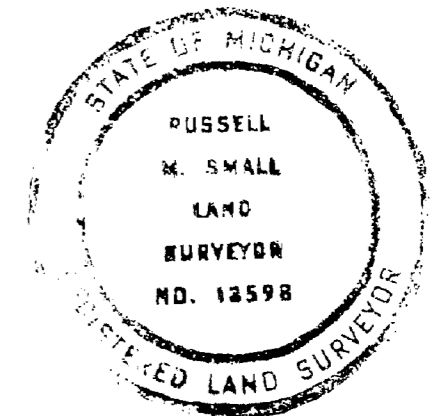
Bearings are based on the true meridian and transit angles; information was obtained from USGLO resurvey plat.

Concrete monuments are located at points marked O

Lot corners are marked by 1/2" x 36" black iron pipe.



UNPLATTED



March 27 70
9:30 A.
13 + 14
John A. Green
Richard E. Green
April 19 1970

OAK FOREST

A SUBDIVISION OF PART OF THE N.W. 1/4, OF THE N.W. 1/4, SECTION 20,
T.23N.R.6E, PLAINFIELD TOWNSHIP, IOSCO COUNTY, MICHIGAN.

PROPRIETOR'S CERTIFICATE

We as proprietors certify that we caused the land embraced in this plat to be surveyed, divided, mapped and dedicated as represented on this plat and that the roads are for the use of the public; that the public utility easements are private easements and that all other easements are for the uses shown on the plat.

Witness

Lyle Bielby
LYLE BIELBY

Aloysius Bissonnette
Aloysius Bissonnette
Hale, Michigan 48739

Russell M. Small
RUSSELL M. SMALL

Bernice Bissonnette
Bernice Bissonnette
Hale, Michigan 48739

ACKNOWLEDGEMENT

State of Michigan)
Iosco County) S.S.

Personally came before me this 24 day of SEPTEMBER 1969, the above named Aloysius Bissonnette and Bernice Bissonnette, his wife, to me known to be the persons who executed the foregoing instrument and acknowledged that they executed the same as their free act and deed.

Notary Public Richard E. Parkinson Iosco County,
RICHARD E. PARKINSON Michigan
My commission expires MAY 4, 1970.

PROPRIETOR'S CERTIFICATE

We as proprietors certify that we caused the land embraced in this plat to be surveyed, divided, mapped and dedicated as represented on this plat and that the roads are for the use of the public; that the public utility easements are private easements and that all other easements are for the uses shown on the plat.

Witness

Dennis B. Chrivia
DENNIS B. CHRIVIA

Harry E. Everett
Harry E. Everett
5700 Inkster Road
Dearborn Heights, Michigan

Sandra L. Surato
SANDRA L. SURATO

Esther G. Everett
Esther G. Everett
5700 Inkster Road
Dearborn Heights, Michigan

ACKNOWLEDGEMENT

State of Michigan)
Iosco County) S.S.

Personally came before me this 22 day of SEPT., 1969, the above named Harry E. Everett and Esther G. Everett, his wife, to me known to be the persons who executed the foregoing instrument and acknowledged that they executed the same as their free act and deed.

Notary Public Dennis B. Chrivia Iosco County,
DENNIS B. CHRIVIA Michigan
My commission expires July 4, 1971.

CORPORATION CERTIFICATE

Farmers and Merchants State Bank, a corporation duly organized and existing under the laws of the State of Michigan by Arnold H. Beyerlein, Exec. Vice Pres. and Richard E. Parkinson, Cashier, as proprietor, has caused the land to be surveyed, divided, mapped and dedicated as represented on this plat and that the roads are for the use of the public; that the public utility easements are private easements and that all other easements are for the uses shown on the plat.

Witness

Carolyn Thompson
CAROLYN THOMPSON

William S. McKulsky
WILLIAM S. MCKULSKY

ACKNOWLEDGEMENT

State of Michigan)
Iosco County) S.S.

Personally came before me this 24 day of Sept., 1969, Arnold H. Beyerlein, Exec. Vice Pres., and Richard E. Parkinson, Cashier, of the above named corporation, to me known to be the persons who executed the foregoing instrument, and to me known to be such President and Cashier of said Corporation, and acknowledged that they executed the foregoing instrument as such officers as the free act and deed of said Corporation, by its authority.

Notary Public William S. McKulsky Iosco County,
WILLIAM S. MCKULSKY Michigan
My commission expires 8/14/73.

FARMERS AND MERCHANTS STATE BANK
Hale, Michigan 48739

Arnold H. Beyerlein
Arnold H. Beyerlein, Exec. Vice Pres.

Richard E. Parkinson
Richard E. Parkinson, Cashier

CERTIFICATE OF MUNICIPAL APPROVAL

I certify that this plat was approved by the Township Board of the Township of Plainfield at a meeting held OCT. 13, 1969 and was reviewed and found to be in compliance with Act 288 P.A. 1967.

Preliminary plat was approved by District Health Department No. 2 on September 2, 1969.

Frances I. Boase clerk
FRANCES I. BOASE CLERK

COUNTY PLAT BOARD CERTIFICATE

This plat has been reviewed and is approved by the Iosco County Plat Board on DEC. 1, 1969 as being in compliance with all the provisions of Act 288, P. A. 1967 and the Plat Board's applicable rules and regulations.

Albert H. Buch
Albert H. Buch, Register of Deeds

D. Keith Papas
D. Keith Papas, County Clerk

Edward J. Nelkie
Edward J. Nelkie, County Treasurer

COUNTY TREASURER'S CERTIFICATE

The records in my office show no unpaid taxes or special assessments for the five years preceding SEPT. 25, 1969, involving the lands included in this plat.

Edward J. Nelkie
Edward J. Nelkie, County Treasurer

Iosco County

COUNTY DRAIN COMMISSIONER'S CERTIFICATE

Approved on SEPT. 25, 1969 as complying with Section 192 of Act 288 P.A. 1967 and the applicable rules and regulations published by my office in the County of Iosco.

John A. Mielock
John A. Mielock, Drain Commissioner

CERTIFICATE OF COUNTY ROAD COMMISSION

Approved on SEPT. 25, 1969 as complying with Section 183 of Act 288, P.A. 1967 and the applicable published rules and regulations of the Board of County Road Commissioners of Iosco County.

Clarence Curry
Clarence Curry, Member

A. J. Aulerich
A. J. Aulerich, VICE CHAIRMAN

Henry M. Conley
Henry M. Conley, Chairman

51633