

ASSESSOR'S PLAT OF LOTS 32 THROUGH 39 OF LAKESIDE HEIGHTS

A PLAT IN THE SW 1/4 AND NW 1/4 OF SECTION 4, T.23N., R.5 E.,
PLAINFIELD TOWNSHIP, IOSCO COUNTY, MICHIGAN

SURVEYOR'S CERTIFICATE ON ASSESSOR'S PLAT

I, KEYNO J. SHELLNBARGER, SURVEYOR, CERTIFY:

THAT I HAVE SURVEYED, DIVIDED AND MAPPED THE LAND SHOWN ON THIS PLAT, DESCRIBED AS FOLLOWS:

ASSESSOR'S PLAT OF LOTS 32 THROUGH 39 OF LAKESIDE HEIGHTS, A PLAT IN THE SOUTHWEST 1/4 AND NORTHWEST 1/4 OF SECTION 4, T.23N., R.5E., PLAINFIELD TOWNSHIP, IOSCO COUNTY, MICHIGAN, AS RECORDED IN LIBER 2 OF PLATS, PAGES 19, 20, AND 21, IOSCO COUNTY RECORDS, DESCRIBED AS COMMENCING AT THE SOUTHWEST CORNER OF SAID SECTION 4; THENCE N.00°18'18"E., ALONG THE WEST LINE OF SAID SECTION 4, 2063.67 FEET TO A MEANDER CORNER NEAR THE SHORE OF LONG LAKE; THENCE N.52°52'47"E., ALONG A TRAVERSE LINE THAT CROSSES LONG LAKE, 1550.12 FEET TO A TRAVERSE POINT NEAR THE SHORE OF SAID LONG LAKE AND POINT OF BEGINNING; THENCE ALONG AN INTERMEDIATE TRAVERSE LINE, S.59°02'09"E., 134.39 FEET, N.44°16'57" E., 160.16 FEET AND N.34°31'36"E., 174.76 FEET; THENCE S.62°49'16"E., 7000 FEET TO THE WESTERLY RIGHT-OF-WAY LINE OF LAKESIDE BOULEVARD (RIGHT-OF-WAY WIDTH CHANGES LINEARLY FROM ZERO TO 50 FEET); THENCE S.23°40'00"W, ALONG SAID WESTERLY RIGHT-OF-WAY LINE, 414.89 FEET; THENCE CONTINUING ALONG SAID WESTERLY RIGHT-OF-WAY LINE, S.68°40'29"W, 125.13 FEET; THENCE N.21°26'55"W, 287.92 FEET TO THE POINT OF BEGINNING, CONTAINING SEVEN LOTS NUMBERED CONSECUTIVELY 1 THROUGH 7 INCLUSIVE, 1.50 ACRES AND ALL LAND BETWEEN THE INTERMEDIATE TRAVERSE LINE AND EDGE OF WATER.

THAT I HAVE MADE SUCH SURVEY, LAND DIVISION AND PLAT BY THE DIRECTION OF THE PLAINFIELD TOWNSHIP BOARD OF TRUSTEES, ON MARCH 13, 1991.

THAT SUCH PLAT IS A CORRECT REPRESENTATION OF ALL THE EXTERIOR BOUNDARIES OF THE LAND SURVEYED AND THE SUBDIVISION OF IT.

THAT THE REQUIRED MONUMENTS AND LOT MARKERS HAVE BEEN LOCATED IN THE GROUND.

THAT THE ACCURACY OF SURVEY IS WITHIN THE LIMITS REQUIRED BY SECTION 126 OF THE ACT.

THAT THE BEARINGS SHOWN ON THE PLAT ARE EXPRESSED AS REQUIRED BY SECTION 126 (3) OF THE ACT AND AS EXPLAINED IN THE LEGEND.

November 22, 1993 (DATE) SHELLNBARGER ENGINEERING AND SURVEYING, P.C.
5910 N. HAGADORN ROAD
EAST LANSING, MICHIGAN 48823



Keyno J. Shellenbarger
KEYNO J. SHELLNBARGER, PRESIDENT
LLS 30101

ASSESSOR'S CERTIFICATE

I, AS SUPERVISOR AND ASSESSOR, BY VIRTUE OF THE AUTHORITY VESTED IN SECTION 201 (2), ACT 288 OF P. A. OF 1967, HAVING BEEN DULY AUTHORIZED BY THE TOWNSHIP OF PLAINFIELD, IOSCO COUNTY, STATE OF MICHIGAN, HAVE CAUSED THE LAND DESCRIBED IN THE ANNEXED PLAT TO BE SURVEYED, LAID OUT AND PLATTED AND CERTIFY THAT THE TITLE TO THE STREETS SHOWN ON THE PLAT HAS BEEN ACQUIRED BY DEDICATION AND THAT THE PLAT CONFORMS TO SECTIONS 201 THROUGH 213 OF ACT 288 OF P. A. OF 1967, AS AMENDED.

WITNESSES:

Laura G. Caton
Laura G. Caton
Michelle Laszlo
Michelle Laszlo

Joseph Kimmerer
JOSEPH KIMMERER, SUPERVISOR/ASSESSOR
220 N. WASHINGTON
HALE, MICHIGAN 48739

ACKNOWLEDGMENT

STATE OF MICHIGAN,
SS.
COUNTY OF IOSCO

ON THIS 12TH DAY OF JANUARY A. D. 1994, BEFORE ME PERSONALLY CAME THE ABOVE NAMED JOSEPH KIMMERER, ASSESSOR OF PLAINFIELD TOWNSHIP, KNOWN TO ME TO BE THE PERSON WHO EXECUTED THE ABOVE DEDICATION, AND ACKNOWLEDGED THE SAME TO BE HIS FREE ACT AND DEED AS SUCH ASSESSOR.

Betty Lou Hartley
Betty Lou Hartley
NOTARY PUBLIC IN AND FOR IOSCO COUNTY.

MY COMMISSION EXPIRES 5-30-94

CERTIFICATE OF COUNTY ROAD COMMISSION

THE BOARD OF COUNTY ROAD COMMISSIONERS OF THE COUNTY OF IOSCO HEREBY CERTIFIES THAT THE PUBLIC ROADS SHOWN ON THE PLAT WERE IN EXISTENCE AT THE TIME THE PLAT WAS MADE. THIS CERTIFICATION IS MADE THIS 7th DAY OF December, 1993, IN ACCORDANCE WITH SECTION 209 (1) OF ACT 288 OF 1967.

Frank M. Leiva MEMBER
Frank M. Leiva
Richard M. Harris MEMBER
Richard M. Harris
Stanley Kowalski CHAIRMAN
Stanley Kowalski

CERTIFICATE OF MUNICIPAL APPROVAL OF ASSESSOR'S PLAT

THIS PLAT WAS APPROVED ON JANUARY 12, 1994, BY THE BOARD OF TRUSTEES OF PLAINFIELD TOWNSHIP, AS HAVING BEEN MADE AND COMPLYING WITH THE REQUIREMENTS OF SECTION 201 AND 209 (4) OF P. A. 288 OF 1967.

Beverly Bernard
BEVERLY BERNARD, CLERK

RECORDING CERTIFICATE)

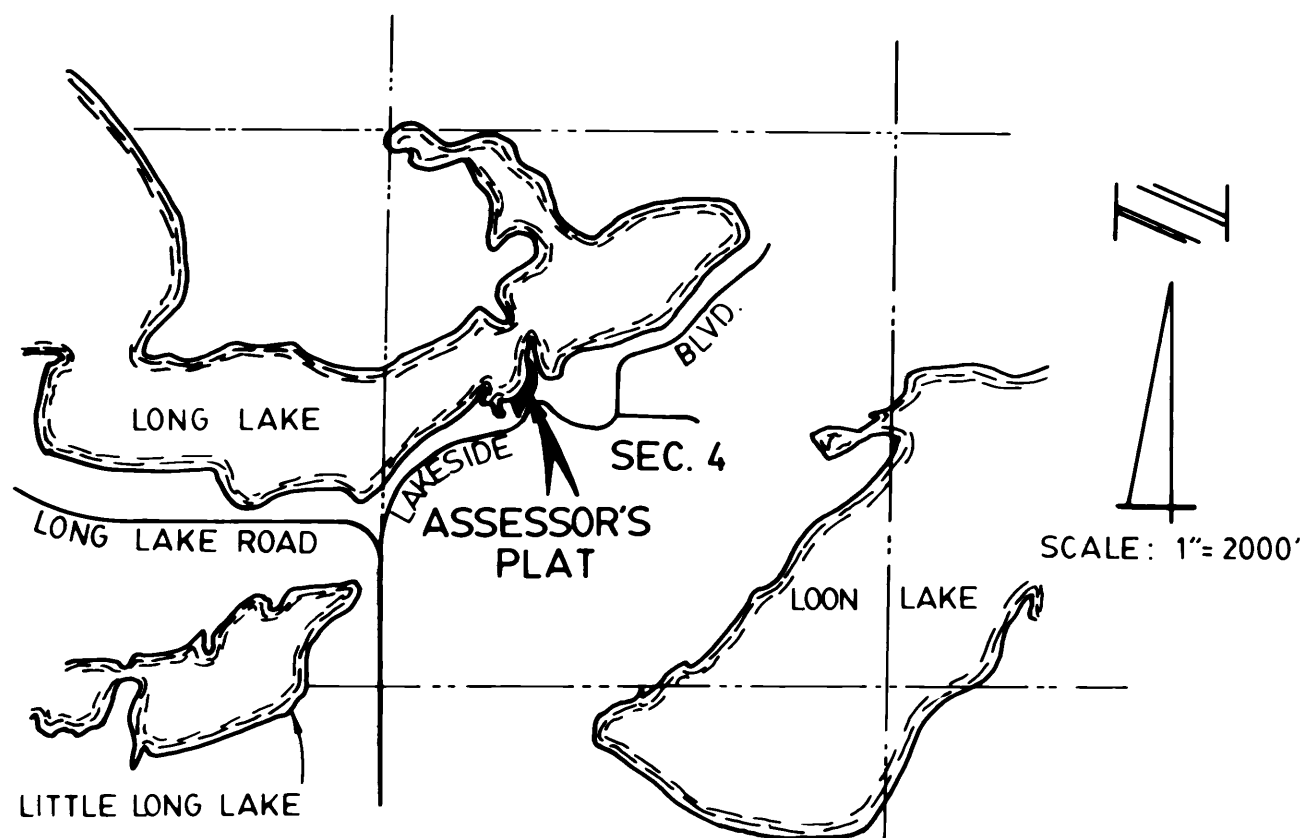
STATE OF MICHIGAN)
COUNTY OF IOSCO)

THIS PLAT WAS RECEIVED FOR RECORD ON THE 14th DAY OF March, 1994, AT 0:05 PM AND IS RECORDED IN LIBER 112 OF PLATS ON PAGE 28-23

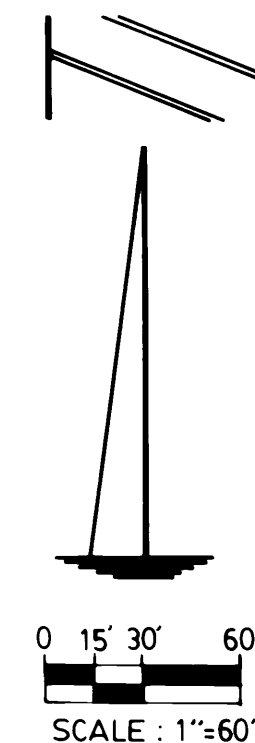
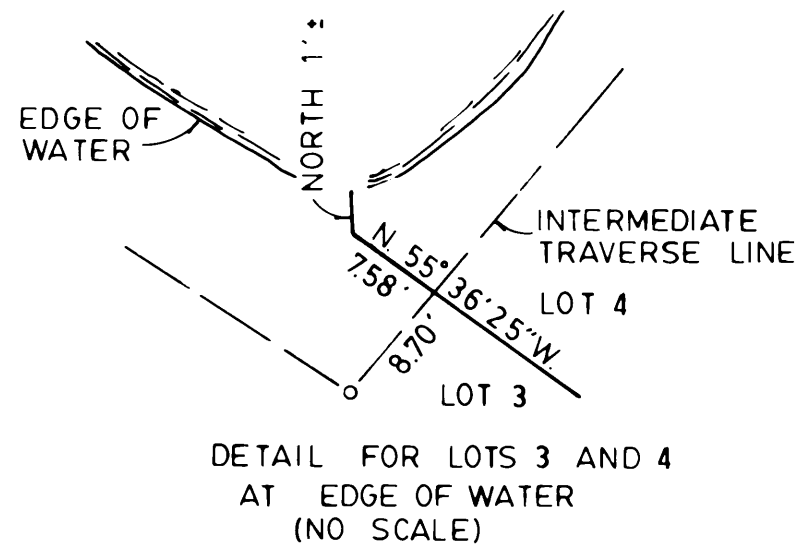
Bonita M. Coyle
BONITA M. COYLE, REGISTER OF DEEDS

ASSESSOR'S PLAT OF LOTS 32 THROUGH 39 OF LAKESIDE HEIGHTS

A PLAT IN THE SW 1/4 AND NW 1/4 OF SECTION 4, T.23N., R.5E.,
PLAINFIELD TOWNSHIP, IOSCO COUNTY, MICHIGAN



LOCATION SKETCH

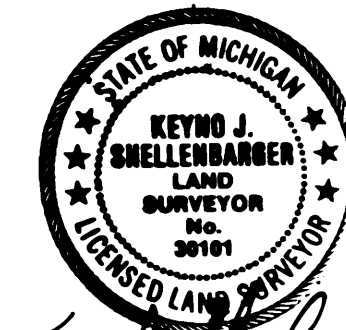
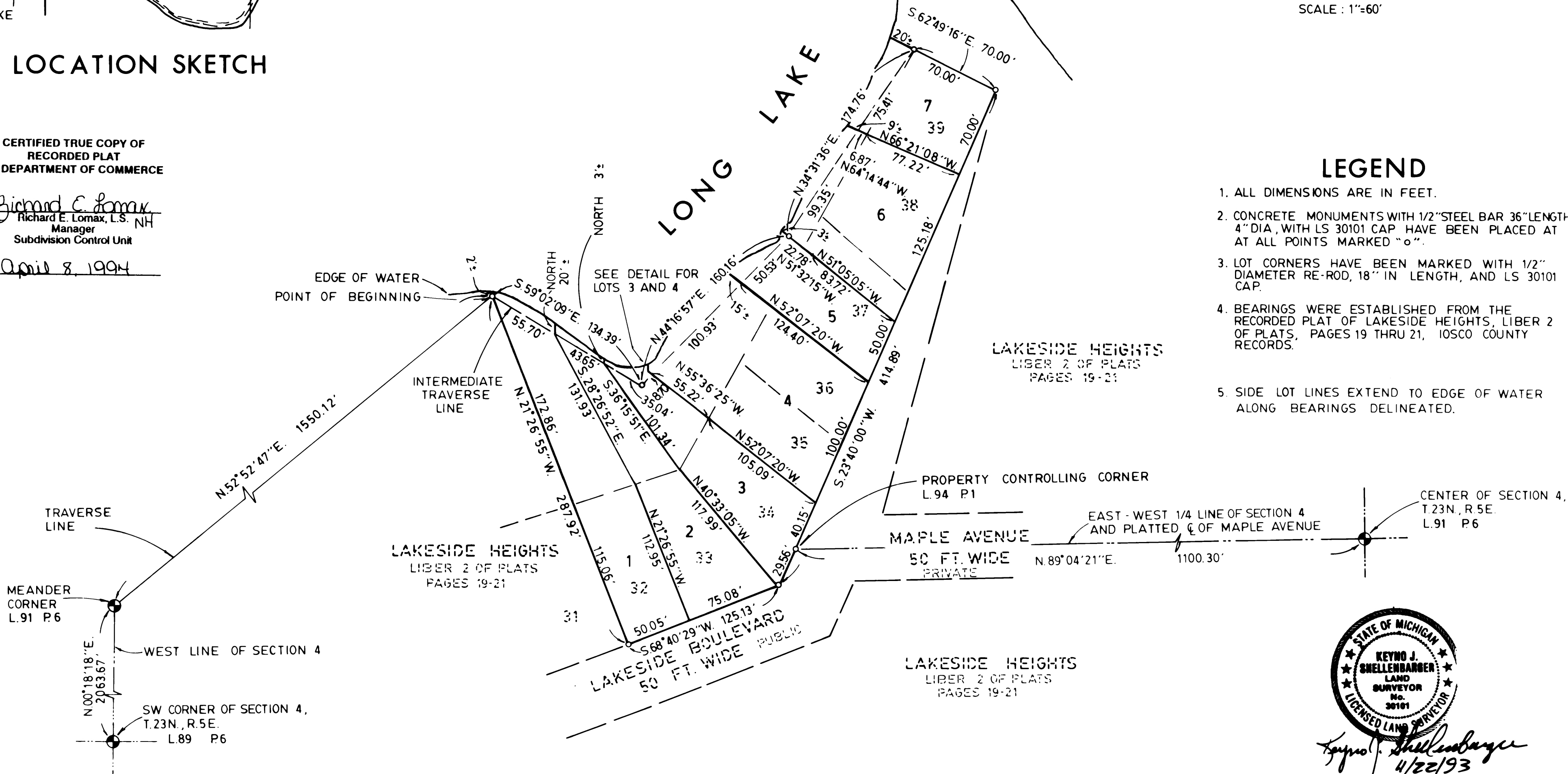


CERTIFIED TRUE COPY OF
RECORDED PLAT
BY DEPARTMENT OF COMMERCE

By Richard E. Lomax
Richard E. Lomax, L.S., N.H.
Manager
Subdivision Control Unit

Date April 8, 1994

- ### LEGEND
- ALL DIMENSIONS ARE IN FEET.
 - CONCRETE MONUMENTS WITH 1/2" STEEL BAR 36" LENGTH, 4" DIA., WITH LS 30101 CAP HAVE BEEN PLACED AT ALL POINTS MARKED "O".
 - LOT CORNERS HAVE BEEN MARKED WITH 1/2" DIAMETER RE-ROD, 18" IN LENGTH, AND LS 30101 CAP.
 - BEARINGS WERE ESTABLISHED FROM THE RECORDED PLAT OF LAKESIDE HEIGHTS, LIBER 2 OF PLATS, PAGES 19 THRU 21, IOSCO COUNTY RECORDS.
 - SIDE LOT LINES EXTEND TO EDGE OF WATER ALONG BEARINGS DELINEATED.



Keyno J. Smellenbarger
4/22/93

062577