

DEDICATION

KNOW ALL MEN BY THESE PRESENTS, that we, EARL BIELBY and OPAL BIELBY his wife Frank H. Williamson and Genella S. Williamson his wife Harold W. Hursh and Evangeline E. Hursh his wife William J. Williamson and Lorraine S. Williamson his wife

as proprietors, have caused the land embraced in the annexed plat to be surveyed, laid out and platted, to be known as Little Long Shores Subdivision. A subdivision of part of S.W. 1/4, S.W. 1/4, Section 5, and part of Gov't lot 4, Section 8, T. 23 N., R. 5 E., Plainfield Twp., Iosco County, Michigan

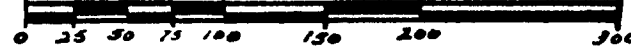
and that the streets and alley as shown on said plat are hereby dedicated to the use of public

Signed and Sealed in the Presence of: Earl Bielby, Opal Bielby, Carl R. Small (Witness), Frank H. Williamson, Evangeline E. Hursh, William J. Williamson, Lorraine S. Williamson

LITTLE LONG SHORES SUBDIVISION

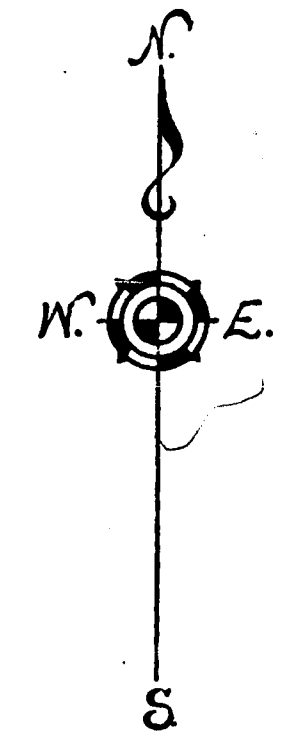
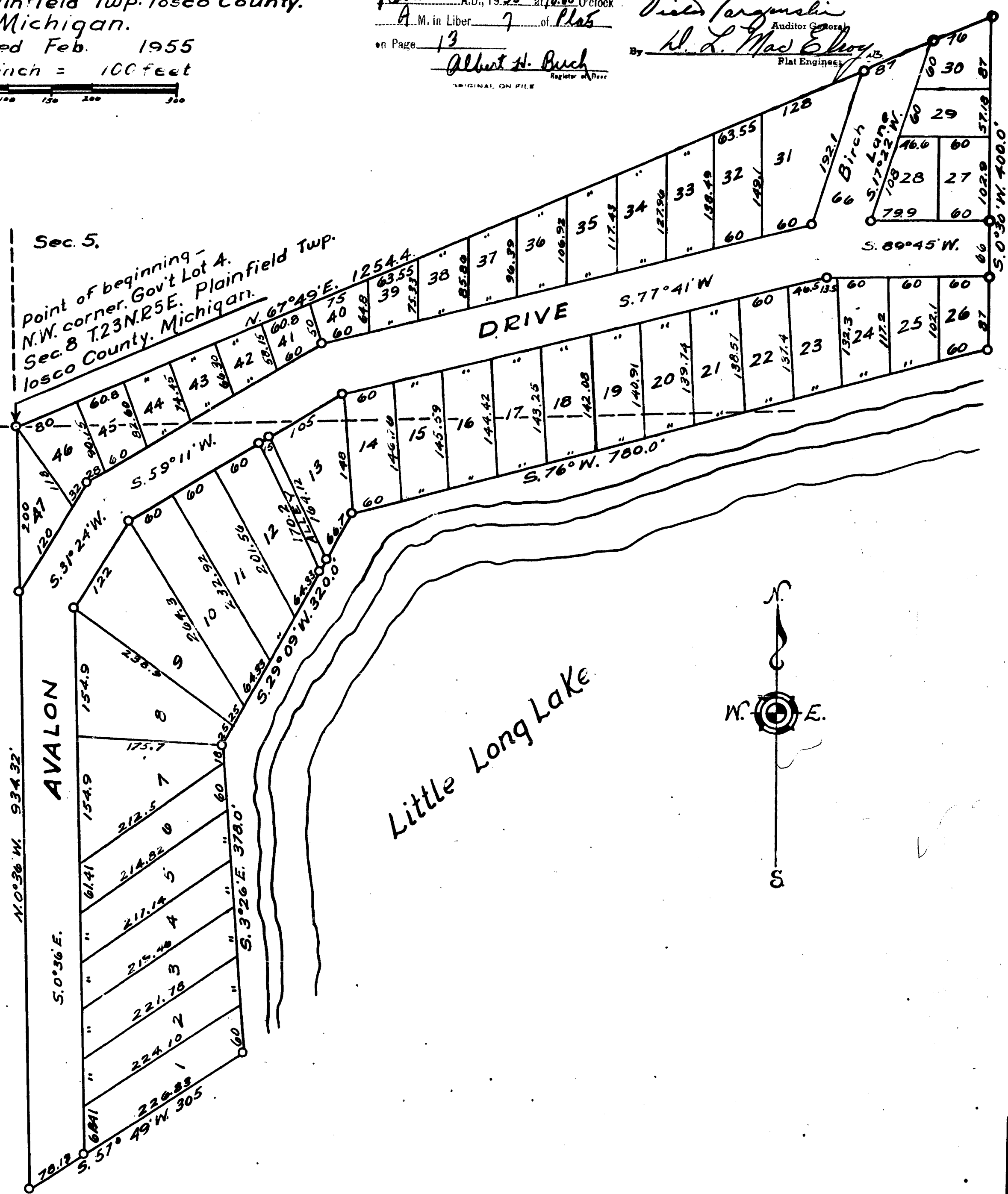
A subdivision of part of S.W. 1/4, S.W. 1/4, Section 5, & part of Gov't Lot 4, Section 8, T. 23 N. R. 5 E. Plainfield Twp. Iosco County, Michigan.

Surveyed Feb. 1955 Scale 1 inch = 100 feet



Recorder's Office, Iosco County, Michigan. Plat of Little Long Shores Subdivision, Plainfield Twp. was Recorded this 1st day of November A.D., 1955 at 10:00 O'clock A.M. in Liber 7 of Plat on Page 13. Albert H. Buch, Register of Deeds.

Every county plat copy is a true copy of map as plat was recorded in the register of Deeds for recording. Date October 21, 1955. Filed in Auditor General's Dept. Date November 3, 1955. Examined and approved. Date October 21, 1955. V. J. Pargusinski, Auditor General. H. L. Mac Elroy, Plat Engineer.



36966

ACKNOWLEDGMENT

STATE OF MICHIGAN County of Iosco. On this 23 day of September 1955, before me, a Notary Public in and for said County, personally came the above named Earl Bielby and Opal Bielby his wife Frank H. Williamson and Genella S. Williamson his wife Harold W. Hursh and Evangeline Hursh his wife William J. Williamson and Lorraine S. Williamson his wife known to me to be the persons who executed the above dedication, and acknowledged the same to be their free act and deed.

APPROVAL BY COUNTY PLAT BOARD

This plat was approved on the 18th day of October 1955. Albert H. Buch (County Register of Deeds), George A. Prescott (County Clerk), Grace L. Miller (County Treasurer).

APPROVAL BY BOARD OF COUNTY ROAD COMMISSIONERS

This plat has been examined and was approved on the 25th day of September 1955 by the County Board of Road Commissioners. Clarence Curry (Chairman), Harold Black (Member), W. D. Nunn (Member).

COUNTY TREASURER'S CERTIFICATE

Office of County Treasurer, Iosco County. I hereby certify, that there are no tax liens or titles held by the State on the lands described hereon, and that there are no tax liens or titles held by individuals on said lands, for the five years preceding the 1st day of October 1955 and that the taxes for said period of five years are all paid, as shown by the records of this office. Grace L. Miller (County Treasurer).

SURVEYOR'S CERTIFICATE

I hereby certify that the plat hereon delineated is a correct one and that permanent metal monuments consisting of bars not less than one-half inch in diameter and 48 inches in length, or shorter bars of not less than one-half inch in diameter lapped over each other at least 6 inches with an over-all length of not less than 48 inches, encased in a concrete cylinder at least 4 inches in diameter and 48 inches in depth have been placed at points marked thus (P) as thereon shown at all angles in the boundaries of the land platted, at all the intersections of streets, intersections of alleys, or of streets and alleys, and at the intersections of streets and alleys with the boundaries of the plat as shown on said plat. Carl R. Small, Registered Land Surveyor or Registered Professional Engineer.

DESCRIPTION OF LAND PLATTED

The land embraced in the annexed plat of Little Long Shores Subdivision A subdivision of part of S.W. 1/4, S.W. 1/4, Section 5, and part of Gov't lot 4, Section 8, T. 23 N., R. 5 E., Plainfield Twp., Iosco County, Michigan is described as follows

Beginning at the N. W. corner of Gov't lot 4, Section 8, T. 23 N., R 5 E., Plainfield Twp., Iosco County, Michigan, thence N. 67° 49' E. 1254.4 ft.; thence S. 0° 30' W. 400 ft.; thence S. 76° W. 780.0 ft.; thence S. 29° 09' W. 320.0 ft.; thence S. 3° 26' E. 378.0 ft.; thence S. 57° 49' W. 305 ft.; thence N. 0° 36' W. 934.32 ft. to the point of beginning. And containing lots 1 through 47, lots 1 through 28 extending to the waters edge. Bearings of lines on this plat are based on transit angles and compass bearings the declination set at 4 degrees W. Dimensions are in feet and decimals thereof.

MUNICIPAL APPROVAL

This plat was approved by the Board of the Township of Plainfield at a meeting held August 1, 1955. Gilbert Follette (Clerk)