

SUPERVISOR'S PLAT OF HARRY GOLDSMITH'S "JOSE LAKE RESORT NO 2"

Subdivision of parts of Gov. lot 5, Sec. 9, and Gov. lot 3 Sec. 10,
T.24N.R.5E. Plainfield Township, Iosco County, Michigan.
Surveyed Aug. 1941.
Scale 1 inch = 100 feet.
Scale of feet:

DEDICATION

KNOW ALL MEN BY THESE PRESENTS, That I,

Glen P. Sabin Supervisor of the
township of Plainfield, Iosco County, Michigan,
by virtue of a thority in me vested by Sec. 51,
Act 172, of 1929, having been duly authorized
by the Township board, have caused the land
described in the annexed plat to be surveyed,
laid out and platted to be known as Supervisor's
Plat of HARRY GOLDSMITH'S JOSE LAKE RESORT NO 2
a subdivision of parts of Gov. lot 5, sec. 9 and Gov. lot 3, sec. 10,
T.24N.R.5E. Plainfield Twp., Iosco County, Michigan, and
that the Road and lane as shown on said plat are
now being used for such purposes.

Glen P. Sabin
Glen P. Sabin
Supervisor of Plainfield Township.

Witnesses:

Carl R. Small
Carl R. Small
Carl B. Babcock
Carl B. Babcock

STATE OF MICHIGAN } SS.
COUNTY OF IOSCO }

On this 20th day of September 1941,
before me, a Notary Public in and for said County,
personally came the above named

Glen P. Sabin Supervisor of Plainfield
Twp., known to me to be the person who executed the
above dedication, and acknowledged the same to be
his free act and deed as such supervisor.

Carl B. Babcock
Carl B. Babcock
Notary Public, Iosco County, Michigan.

My Commission expires June 17, 42

DESCRIPTION

The land embraced in the annexed Supervisor's Plat of
HARRY GOLDSMITH'S, "Jose Lake Resort No 2" a subdivision
of parts of Gov. lot 5, Sec. 9 and Gov. lot 3 sec. 10, T.24N.R.5E,
Plainfield Township, Iosco County, Michigan, is des-
cribed as follows:
Beginning at a point which is N.36°37'E. 166 ft. from the
corner Common to sec's 9, 10, 15 and 16, thence along west
R.O.W. of County Road N. 40°11'E. 293.7 ft. thence N.17°05'E.
788.8 ft. to N. boundary of sub., thence S. 89°0'W. 255.9 ft. to
shore of Jose Lake, thence along said shore S. 6°W. 100.2
ft., thence S. 22°18'W. 636.7 ft., thence S. 91°06'W. 211.3 ft.
to S. boundary of sub., thence S. 60°46'E. 258.4 ft. to point of
beginning.

I HEREBY CERTIFY THAT THIS COPY IS
A TRUE COPY OF THE MAP OR PLAT
FORWARDED TO THE REGISTER OF DEEDS
FOR RECORDING.

COMPIRED November 3, 1941
Mayme Jewell Furdy
Mayme Jewell Furdy DEPUTY AUDITOR GENERAL

FILED IN AUDITOR GENERAL'S DEPT.
November 6, 1941
Mayme Jewell Furdy
Mayme Jewell Furdy DEPUTY AUDITOR GENERAL

CERTIFICATE OF APPROVAL BY COUNTY BOARD

This plat was approved on the 20th day of
September 1941.

H. Read Smith Judge of Probate.
H. Read Smith
R. H. McKenzie County Clerk.
R. H. McKenzie
Grace L. Miller County Treasurer.
Grace L. Miller

CERTIFICATE OF APPROVAL BY BOARD OF COUNTY ROAD COMMISSIONERS

This plat has been examined and was approved
on the 7th day of October 1941
by the Iosco County Board of Road Commissioners.

Ernest Crego Chairman.
Ernest Crego
Elmer Brittt Member.
Elmer Brittt
John A. Mielock Member.
John A. Mielock

CERTIFICATE OF TOWNSHIP APPROVAL

This plat was approved by the Township Board of
the Township of Plainfield at a meeting held the
20th day of September 1941.

H. S. Towasend Township Clerk.
H. S. Towasend

SURVEYOR'S CERTIFICATE

Bearings of lines on this plat are based on Transit
angles and Compass bearings the declination set
at 3°35'W, dimensions are in feet and decimals
there of.
I hereby Certify, that the plat hereon delineated is
a correct one and that permanent metal monuments
consisting of bars not less than 1/2 inch in diameter
and 48 inches in length, encased in a concrete base
4 inches by 4 inches by 48 inches in depth have been placed
at points marked thus @, as shown thereon at all angles
in the boundaries of the land platted, at all intersections
of lanes, or streets and lanes, and at intersections
of streets and lanes with the boundaries of the plat
as shown on said plat.

John W. Applin Registered Land Surveyor.
John W. Applin

CERTIFICATE AS TO COUNTY ROADS

We hereby certify that said plat appears to include
land located on a County road.

H. Read Smith Judge of Probate.
H. Read Smith
R. H. McKenzie County Clerk.
R. H. McKenzie
Grace L. Miller County Treasurer.
Grace L. Miller

COPY

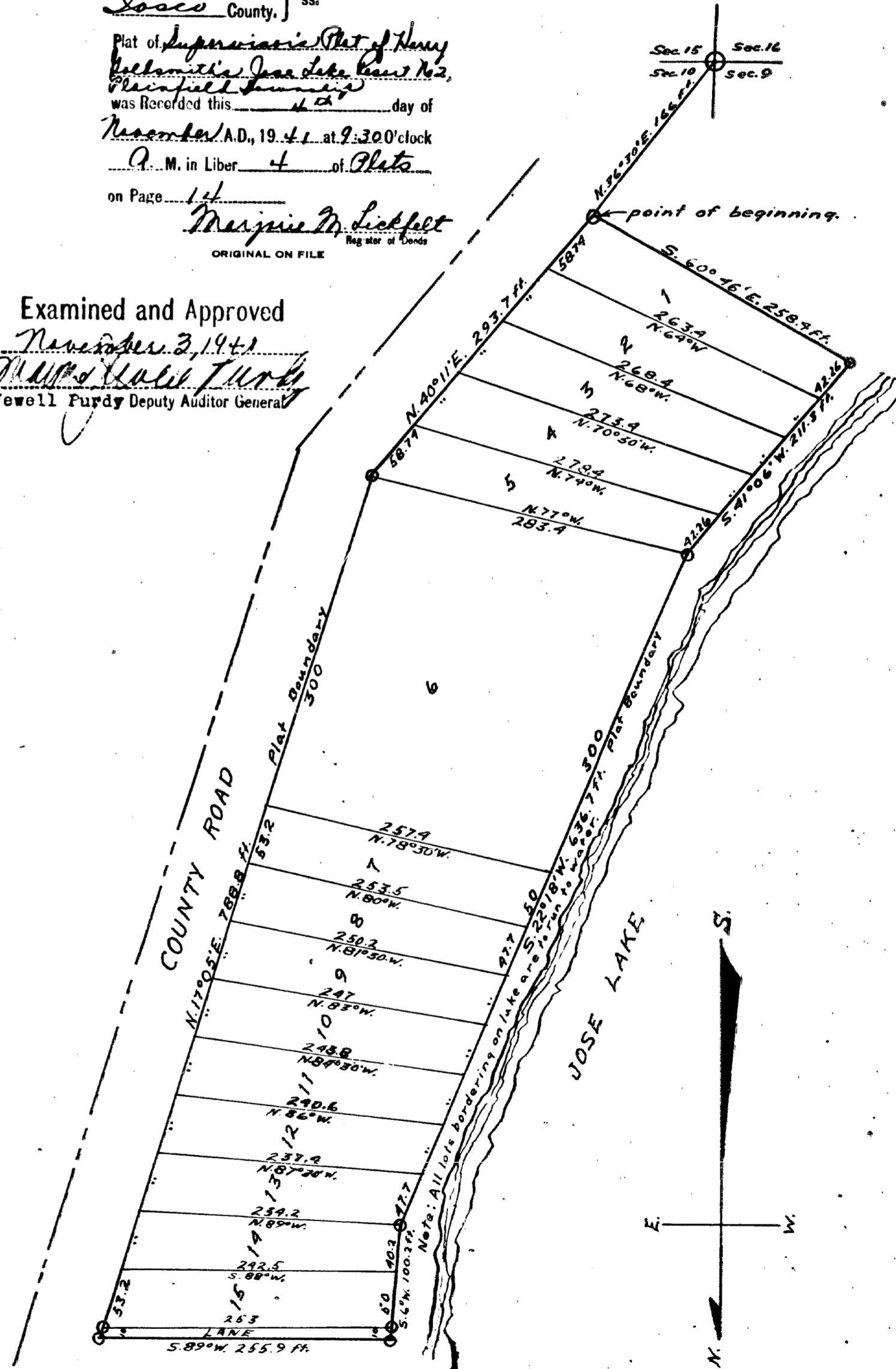
Register's Office
Iosco County, } ss.

Plat of Supervisor's Plat of Harry
Goldsmith's Jose Lake Resort No 2,
Plainfield Twp., Iosco County, Michigan
was Recorded this 14th day of
November A.D. 1941 at 9:30 o'clock
A.M. in Liber 4 of Plats

on Page 14
Marjorie M. Lick
ORIGINAL ON FILE

Examined and Approved

November 3, 1941
Mayme Jewell Furdy Deputy Auditor General



23396