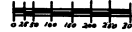


SUPERVISOR'S PLAT OF 'JOSE LAKE RESORT'

Subdivision of parts of lot 1 and lot 2, Sec. 16,
T. 24 N. R. 5 E., Plainfield Township, Iosco County,
Michigan.

Surveyed June 28-30, 1939.
Scale 1 inch = 200 feet.



COPY
Register's Office
Iosco County, MI
Plat of Supervisor's Plat of
Jose Lake Resort
was Recorded this 8th day of
September, A.D., 1939, at 9:20 of clock
A. M. in Liber 2 of Plats
on Page 44
M. J. L. Hill
Register of Deeds
ORIGINAL ON FILE

DEDICATION

KNOW ALL MEN BY THESE PRESENTS THAT I

Lewis J. Hump Supervisor for the Township of Plainfield, County of Iosco, State of Michigan, by virtue of authority in me vested by Section 5, Act 172, of 1829, have caused the land described in the annexed plat, to be surveyed, laid out and platted, to be known as a Supervisor's Plat of JOSE LAKE RESORT, a subdivision of parts of lot 1 and lot 2, Sec. 16, T. 24 N. R. 5 E., Plainfield Township, Iosco County, Michigan, and that the Drives, Street and Alleys are private for the use of lot owners only.

Lewis J. Hump Supervisor of Plainfield Twp.

Signed and Sealed in the presence of

Hobart Brayman
Hobart Brayman
Mrs. Millian Lockhart
Mrs. Millian Lockhart

STATE OF MICHIGAN } SS:
COUNTY OF IOSCO

On this 28th day of July, 1939, before me a Notary Public, personally came Lewis J. Hump known to me to be the person who made the above dedication and acknowledged the same to be his free act and deed, as such Supervisor.

R. H. McKenzie
R. H. McKenzie
Notary Public

My Commission expires 1/1/1943

DESCRIPTION

The land embraced in the annexed Supervisor's plat of JOSE LAKE RESORT, a subdivision of parts of lot 1 and lot 2, Sec. 16, T. 24 N. R. 5 E., Plainfield Twp., Iosco County, Michigan, is described as follows:
Beginning at a point which is S. 89° 30' W. 70 feet from the corner common to Sections 9, 10, 15 and 16, T. 24 N. R. 5 E.; thence S. 35° W. 116.8 ft.; S. 5° E. 52.4 ft.; S. 30° W. 159 ft.; S. 48° W. 400 ft.; S. 73° W. 140 ft. by S. 87° W. 150 ft.; N. 87° W. 123 ft.; N. 70° W. 65 ft.; N. 61° 15' W. 69 ft.; N. 57° W. 565 ft. to the North and South 1/4 line Sec. 16, thence North 302 ft. to the shore of JOSE LAKE; thence along said shore; S. 57° E. 715 ft.; S. 61° 15' E. 570 ft.; S. 74° E. 307 ft.; S. 87° E. 100 ft.; N. 87° E. 100 ft.; N. 73° E. 125 ft.; N. 30° E. 180 ft.; N. 10° E. 300 ft.; West 360 ft.; N. 7° W. 150 ft.; N. 5° E. 140 ft.; N. 17° E. 140 ft.; N. 33° E. 140 ft.; S. 87° W. 230 ft.; S. 18° E. 104 ft.; N. 3° S. 97 ft. to the North line of Sec. 16; thence along said line N. 89° 30' E. 295 ft. to the point of beginning. Note: All lots bordering on the lake are to run to the water.

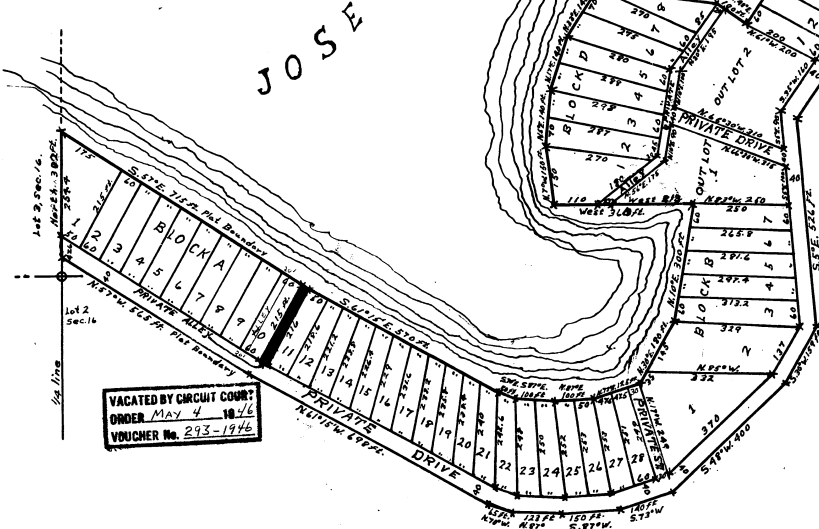
This plat was approved by the County Plat Board of Iosco County Michigan, at a meeting held on the 28th day of July, 1939.
Herman Dehler Circuit Judge,
Grace L. Miller Judge of Probate
R. H. McKenzie County Clerk
Grace L. Miller County Treasurer

Bearings of lines on this plat are based on Compass bearings, and Transit angles; the declination set at 3° 45' W. 1938. Dimensions are in feet and tenths.
I hereby certify, that I have surveyed and staked out the land embraced in the annexed plat, that I have drawn the plat according to said survey, and that permanent monuments consisting of iron pipe 1 1/2" long, set in a concrete base 5" by 4" by 4", have been placed at all angles in the boundaries of the land platted, and at the intersections of the Alleys and Drives, and points marked X.

John P. Roblin Registered Surveyor

This plat was approved by the Town Board of Plainfield Twp., Iosco County, Michigan, at a meeting held on the 29th day of July, 1939.

Herbert S. Townsend Township Clerk



Examined and Approved
8/1/39
Mayme Jewell Purdy Deputy Auditor General

I HEREBY CERTIFY THAT THIS COPY IS A TRUE COPY OF THE MAP OR PLAT FORWARDED THE REGISTER OF DEEDS FOR RECORDING.

COMPARED 8/1/39
Mayme Jewell Purdy DEPUTY AUDITOR GENERAL

FILED IN AUDITOR GENERAL'S DEPT.
8/1/39
Mayme Jewell Purdy DEPUTY AUDITOR GENERAL

VACATED BY CIRCUIT COURT?
ORDER MAY 14 1946
VOUCHER No. 293-1946