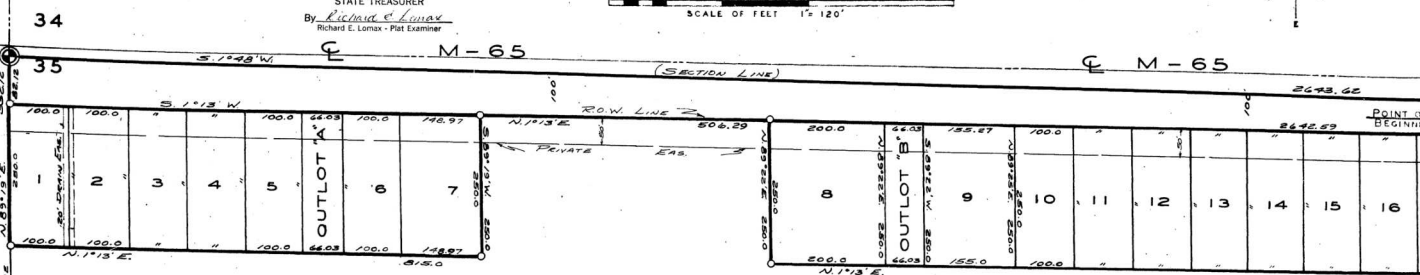
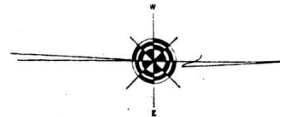


HALL'S "BIRCH ACRES"

COPY
Register's Office
____ County, S. S.
Plat of Hall's Birch Acres
was Recorded this 23rd day of
October A. D., 1966 at 2 o'clock
P. M. in Liber 44 of Plats
on Page 48
Alvin A. Hall
Register of Deeds
ORIGINAL ON FILE

I hereby certify this copy is a true copy of map
SUBDIVISION OF PART OF THE W. 1/2 OF THE S.W. 1/4 OF SECTION 35, T. 24 N. R. 5 E.,
PLAINFIELD TOWNSHIP, IOSCO COUNTY,
MICHIGAN
Date October 11, 1966
FILED IN DEPT. OF TREASURY
DATE October 11, 1966
EXAMINED AND APPROVED
Date October 11, 1966
Allison Green
ALLISON GREEN
STATE TREASURER
By Richard E. Lomas
Richard E. Lomas - Plat Examiner

PLAINFIELD TOWNSHIP, IOSCO COUNTY,
MICHIGAN



DESCRIPTION OF LAND PLATTED

The land embraced in the annexed plat of Hall's "BIRCH ACRES" a subdivision of part of the W. 1/2 of the S.W. 1/4 of Section 35, T. 24 N. R. 5 E., Plainfield Township, Iosco County, Michigan is described as follows: Beginning at the West 2 Corner of said Sec. 35, thence S. 1 1/2 W., along West Section Line, 2643.62 feet to the S.W. Cor. of said Sec. 35, thence N. 89° 19' E., along South Sec. Line, 332.12 feet, thence N. 89° 13' E., 815.0 feet, thence S. 89° 19' W., 250.0 feet to a point on the E. line of Hwy. M-65, thence N. 1° 13' E., along said Line, 506.29 feet, thence N. 89° 22' E., 250.0 feet, thence N. 1° 13' E., 1321.03 feet to the E. 1/4 line, Sec. 35, thence S. 89° 25' W., along said line, 305.05 feet to the Point of Beginning, containing Lots 1 through 18 inclusive and OUTLOTS A & B.

NOTE: All dimensions are given in feet and decimals thereof.

CERTIFICATE OF MUNICIPAL APPROVAL

This plat was approved by the Township Board of the Township of Plainfield at a meeting held April 27, 1966 and is in compliance with Section 10, and that the width of lots conform with the requirements of Section 30, Act 172, of 1929, as amended.

Shirley Lee Kessler
Clerk

SURVEYOR'S CERTIFICATE

I hereby certify that the plat herein delineated is a correct one and that permanent metal monuments consisting of bars not less than one-half inch in diameter and 36 inches in length, or shorter bars of not less than one-half inch in diameter lapped over each other of least 6 inches with an over-all length of not less than 36 inches, enclosed in a concrete cylinder of least 4 inches in diameter and 36 inches in depth have been placed at points marked thus (O) as thereon shown of all angles in the boundaries of the land platted, of all the intersections of streets, intersections of alleys, or of streets and alleys, and of all the intersections of streets and alleys with the boundaries of the plat as shown on said plat.

Prepared and Drafted by John C. Miller
County Building, Howell Michigan

COUNTY TREASURER'S CERTIFICATE

Office of County Treasurer, 10899 County.
I hereby certify, that there are no tax liens or titles held by the State on the lands described hereon, and that there are no tax liens or titles held by individuals on said lands, for the five years preceding the 1966 day of October 1966 and that the taxes for said period of five years are all paid, as shown by the records of this office.
This certificate does not apply to taxes, if any, now in process of collection by township, city or village collecting officers.
Grace L. Miller
Grace L. Miller (County Treasurer)

NOTE: All public utilities easements, as marked Private Easements, shall be in accordance with Act 131, Public Acts of 1953, as amended.

APPROVAL BY BOARD OF COUNTY ROAD COMMISSIONERS

This plat has been examined and was approved on the 26 day of JANUARY, 1966 by the 1966 County Board of Road Commissioners.
W. J. Allevich (Chairman)
Charles J. Gentry (Member)
Richard L. Miller (Member)

CERTIFICATE AS TO STATE TRUNK LINE OR FEDERAL AID ROADS

We hereby certify that said plat appears to include land located on a state trunk line or federal aid road.

Albert H. Buch (Co. Register of Deeds)
George M. Prescott (County Clerk)
Grace L. Miller (County Treasurer)
Richard L. Miller (County Drain Commissioner)

APPROVED August 22, 1966
MICHIGAN STATE HIGHWAY COMMISSION
Howard E. Hill
Howard E. Hill
State Highway Director

APPROVAL BY COUNTY PLAT BOARD

This plat was approved on the 5th day of July, 1966 by the 1966 County Plat Board.
Albert H. Buch (County Register of Deeds)
George M. Prescott (County Clerk)
Grace L. Miller (County Treasurer)
Richard L. Miller (County Drain Commissioner)

DEDICATION

KNOW ALL MEN BY THESE PRESENTS, that we, Hall's "BIRCH ACRES" Walter A. Hall, his wife, of Route 2, Hale, as proprietors, have caused the land embraced in the annexed and platted, to be known as Hall's "BIRCH ACRES" subdivision of part of the W. 1/2 of the S.W. 1/4 of the S.W. 1/4 of the S.W. 1/4 of Section 35, T. 24 N. R. 5 E., Plainfield Township, Iosco County, Michigan, and that M-65 is an existing highway, public use.

Signed and Sealed in the presence of
Louis Bissonette (Witness) Walter L. Hall
Richard L. Miller (Witness) Walter A. Hall

ACKNOWLEDGMENT

STATE OF MICHIGAN
County of IOSCO
On this 5th day of NOVEMBER, 1966,
a Notary Public in and for said County, personally came the abovesigned Walter A. Hall and Wager A. Hall, his wife, of Hale, Michigan, known to me to be the persons who executed the above dedication the same to be their free act and deed.
My Commission expires 1967