

# CLEM - CO PARK

A SUBDIVISION OF PART OF GOVERNMENT LOT 2 OF SECTION 35 T23N R6E  
PLAINFIELD TOWNSHIP IOSCO COUNTY, MICHIGAN.

DEDICATION

KNOW ALL MEN BY THESE PRESENTS, THAT WE MAURICE P. CLEMENT AND EUGENE T. COOPER AS PROPRIETOR, AND FRANCES R. CLEMENT AND MILDRED A. COOPER THEIR WIVES RESPECTIVELY, HAVE CAUSED THE LAND ENBRACED IN THE ANNEXED PLAT TO BE SURVEYED, LAID OUT AND PLATTED, TO BE KNOWN AS CLEM-CO PARK A SUBDIVISION OF PART OF GOVERNMENT LOT 2 OF SECTION 35 T23N R6E PLAINFIELD TOWNSHIP IOSCO COUNTY, MICHIGAN AND THAT THE ROAD, LANE AND TRAIL AS SHOWN ON SAID PLAT ARE HEREBY DEDICATED TO THE USE OF THE PUBLIC.

SIGNED AND SEALED IN PRESENCE OF

<p><u>R. J. Cooke</u> R. J. COOKE</p> <p><u>Herbert Hertzler</u> HERBERT HERTZLER</p>	<p><u>Maurice P. Clement</u> (L.S.) MAURICE P. CLEMENT</p> <p><u>Eugene T. Cooper</u> (L.S.) EUGENE T. COOPER</p> <p><u>Frances R. Clement</u> (L.S.) FRANCES R. CLEMENT</p> <p><u>Mildred A. Cooper</u> (L.S.) MILDRED A. COOPER</p>
---	---

STATE OF MICHIGAN, } ss.  
County of Iosco

ON THIS 12th DAY OF January, 1959 BEFORE ME, A NOTARY PUBLIC IN AND FOR SAID COUNTY, PERSONALLY CAME THE ABOVE NAMED MAURICE P. CLEMENT AND EUGENE T. COOPER AND FRANCES R. CLEMENT AND MILDRED A. COOPER THEIR WIVES RESPECTIVELY, KNOWN TO ME TO BE THE PERSONS WHO EXECUTED THE ABOVE DEDICATION, AND ACKNOWLEDGED THE SAME TO BE THEIR FREE ACT AND DEED.

R. J. Cooke  
R. J. COOKE

NOTARY PUBLIC IOSCO COUNTY, MICHIGAN.

MY COMMISSION EXPIRES SEPTEMBER 22, 1963

DESCRIPTION OF LAND PLATTED

THE LAND ENBRACED IN THE ANNEXED PLAT OF CLEM-CO PARK A SUBDIVISION OF PART OF GOVERNMENT LOT 2 OF SECTION 35 T23N R6E PLAINFIELD TOWNSHIP IOSCO COUNTY, MICHIGAN IS DESCRIBED AS FOLLOWS: FROM THE SOUTH 1/4 CORNER OF SECTION 35 T23N R6E PLAINFIELD TOWNSHIP IOSCO COUNTY, MICHIGAN THENCE S 87° 56' W 55.15 FEET TO THE NORTH 1/4 CORNER OF SECTION 2 T22N R6E GRANT TOWNSHIP IOSCO COUNTY, MICHIGAN THENCE N 0° 35' 54" W 984.4 FEET, THENCE S 56° 06' 36" E 100.93 FEET TO POINT OF BEGINNING. THENCE S 56° 06' 36" E 180.09 FEET, THENCE N 35° 35' 24" E 255.6 FEET, THENCE N 27° 48' 30" E 163.12 FEET, THENCE N 60° 19' 06" E 532.45 FEET, THENCE N 86° 04' 06" E 166.8 FEET, THENCE S 76° 55' 42" E 191.59 FEET, THENCE N 0° 34' 06" W 376.61 FEET, THENCE N 76° 55' 42" W 165.52 FEET, THENCE S 81° 55' 06" W 308.45 FEET, THENCE S 56° 59' 54" W 674.98 FEET, THENCE S 39° 00' 30" W 236.25 FEET, THENCE S 53° 23' 12" E 112.49 FEET, THENCE S 35° 35' 24" W 200 FEET, THENCE S 56° 06' 36" E 60.03 FEET, THENCE S 35° 35' 24" W 48.86 FEET TO POINT OF BEGINNING.

SAID PLAT ENBRACES THIRTY-THREE LOTS NUMBERED ONE TO THIRTY-THREE INCLUSIVE.

CERTIFICATE OF MUNICIPAL APPROVAL

THIS PLAT WAS APPROVED BY THE TOWNSHIP BOARD OF THE TOWNSHIP OF PLAINFIELD AT A MEETING HELD January 11, 1959 AND THAT THE WIDTH OF LOTS IS IN COMPLIANCE WITH REQUIREMENTS OF SECTION 30, ACT 172, OF 1929, AS AMENDED.

Gilbert Follette  
GILBERT FOLLETTE PLAINFIELD TOWNSHIP CLERK.

CERTIFICATE OF APPROVAL BY BOARD OF COUNTY ROAD COMMISSIONERS

THIS PLAT HAS BEEN EXAMINED AND WAS APPROVED ON THE 7th DAY OF January, 1959 BY THE IOSCO COUNTY BOARD OF ROAD COMMISSIONERS.

Clarence Curry  
CLARENCE CURRY CHAIRMAN.

W. D. Nunn  
W. D. NUNN MEMBER.

A. J. Aulerich  
A. J. AULERICH MEMBER.

COUNTY TREASURER'S CERTIFICATE RELATING TO TAXES

OFFICE OF COUNTY TREASURER, IOSCO COUNTY.

I HEREBY CERTIFY, THAT THERE ARE NO TAX LIENS OR TITLES HELD BY THE STATE ON THE LANDS DESCRIBED HEREON, AND THAT THERE ARE NO TAX LIENS OR TITLES HELD BY INDIVIDUALS ON SAID LANDS, FOR THE FIVE YEARS PRECEDING THE 12th DAY OF January, 1959 AND THAT THE TAXES FOR SAID PERIOD OF FIVE YEARS ARE PAID, AS SHOWN BY THE RECORDS OF THIS OFFICE.  
THIS CERTIFICATE DOES NOT APPLY TO TAXES, IF ANY, NOW IN PROCESS OF COLLECTION BY TOWNSHIP COLLECTING OFFICERS.

Grace L. Miller  
GRACE L. MILLER IOSCO COUNTY TREASURER.

CERTIFICATE OF APPROVAL BY COUNTY BOARD

THIS PLAT WAS APPROVED ON THE 12th DAY OF January, 1959 BY THE IOSCO COUNTY PLAT BOARD.

Albert H. Buch  
ALBERT H. BUCH REGISTER OF DEEDS.

George A. Prescott  
GEORGE A. PRESCOTT COUNTY CLERK.

Grace L. Miller  
GRACE L. MILLER COUNTY TREASURER.

E. H. Stickney  
E. H. STICKNEY IOSCO COUNTY DRAIN COMMISSIONER.

SURVEYOR'S CERTIFICATE

I HEREBY CERTIFY THAT THE PLAT HEREON DELINEATED IS A CORRECT ONE AND THAT PERMANENT METAL MONUMENTS CONSISTING OF BARS NOT LESS THAN ONE-HALF INCH IN DIAMETER AND 36 INCHES IN LENGTH ENCASED IN A CONCRETE CYLINDER AT LEAST 4 INCHES IN DIAMETER AND 36 INCHES IN DEPTH HAVE BEEN PLACED IN THE GROUND AT POINTS MARKED THUS (O) AS THEREON SHOWN AT ALL ANGLES IN THE BOUNDARIES OF THE LAND PLATTED, AT THE INTERSECTIONS OF LANE WITH ROAD AND TRAIL AND AT THE INTERSECTIONS OF ROAD AND TRAIL WITH THE BOUNDARIES OF THE PLAT AS SHOWN ON SAID PLAT.

R. J. Cooke  
R. J. COOKE REGISTERED LAND SURVEYOR  
210 NORTH ADAMS STREET  
EAST TAWAS, MICHIGAN.

When my certified plat is presented for recording or filed, forward the fee to the Register of Deeds for recording.

January 15, 1960

January 20, 1960

January 15, 1960

OTIS M. ELLIOTT

REGISTER OF DEEDS

P. L. MacEhoy

P. L. MacEhoy

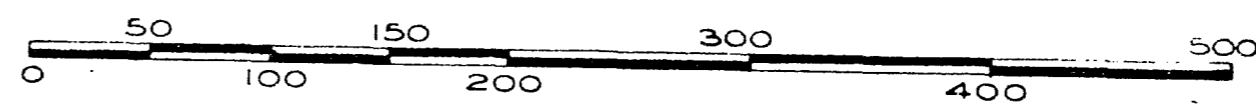
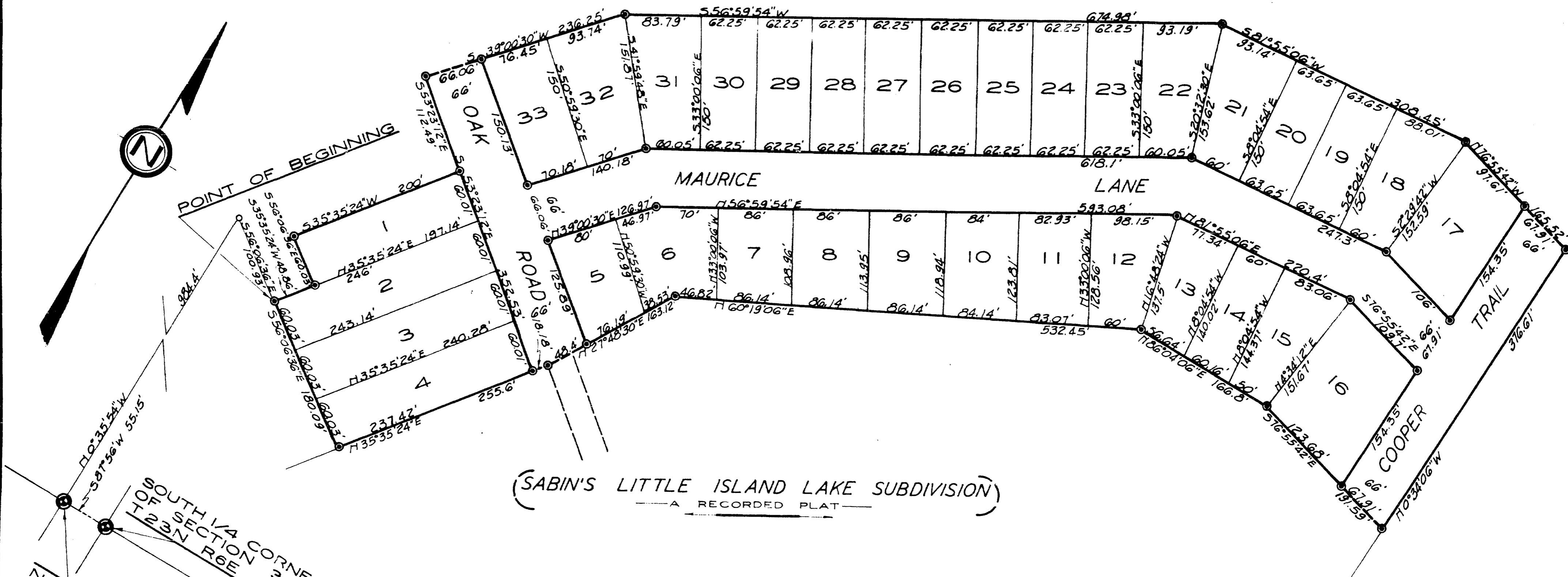
Register's Office  
Iosco County

Clem-Co Park

was Recorded this 18th day of January A.D. 1960 at 10:00 AM  
of Page's 35436 plat  
Albert H. Buch

# CLEM-CO PARK

A SUBDIVISION OF PART OF GOVERNMENT LOT 2 OF SECTION 35 T23N R6E  
PLAINFIELD TOWNSHIP IOSCO COUNTY, MICHIGAN.



SCALE - 1 INCH = 80 FEET

ALL DIMENSIONS ARE GIVEN IN FEET AND DECIMALS THEREOF  
ALL BEARINGS ARE MAGNETIC

SURVEY AND PLAT BY *R. J. COOKE*  
 R. J. COOKE REGISTERED LAND SURVEYOR  
 210 NORTH ADAMS STREET  
 EAST TAWAS, MICHIGAN.

SOUTH 1/4 CORNER  
 OF SECTION 35  
 T23N R6E

(LITTLE ISLAND VIEW)  
 A RECORDED PLAT

NORTH 1/4 CORNER  
 OF SECTION 2  
 T22N R6E

TOWNSHIP LINE  
 GRANT TWP.  
 PLAINFIELD TWP.

(TWIN LAKES SUBDIVISION)  
 A RECORDED PLAT