

BOB-O-LINK PARK SUBDIVISION

PART OF THE NW 1/4 OF THE NW 1/4 OF SEC. 11, T 23 N,
R 5E, PLAINFIELD TWP., IOSCO CO., MICHIGAN.

SURVEYOR'S CERTIFICATE

I, Glenn F. DeLaMater, surveyor, certify:

That I have surveyed, divided and mapped the land shown on this plat. described as follows: BOB-O-LINK PARK SUBDIVISION Part of the NW 1/4 of the NW 1/4 of Section 11, T23N, R5E, Plainfield Twp., Iosco Co., Michigan. Commencing at the Northwest corner Section 11, Town 23 North, Range 5 East, Plainfield Township, Iosco County, Michigan; thence South 89°20'30" East 330.00 feet along the North Section line to the point-of-beginning; thence South 89°20'30" East 963.00 feet along the North Section line; thence South 0°35'00" West 250.00 feet; thence North 89°20'30" West 200.00 feet parallel with the North Section line; thence North 0°35'00" East 200.00 feet; thence North 89°20'30" West 66.00 feet parallel with the North Section line; thence South 0°35'00" West 200.00 feet; thence North 89°20'30" West 120.00 feet, parallel with the North Section line; thence North 0°35'00" East 200.00 feet; thence North 89°20'30" West 66.00 feet parallel with the North Section line; thence South 0°35'00" West 100.00 feet; thence North 89°20'30" West 212.17 feet parallel with the North Section line; thence North 1°02'00" East 150.00 feet parallel with the West Section line to the point-of-beginning. This plat contains 7 lots numbered consecutively 1 thru 7 inclusive.

That I have made such a survey, land-division and plat by the direction of the owners of such land.

That such plat is a correct representation of all the exterior boundaries of the land surveyed and the subdivision of it.

That the required monuments and lot markers have been located in the ground or that surety has been deposited with the municipality, as required by section 125 of the act.

That the accuracy of survey is within the limits required by section 126 of the act.

That the bearings shown on the plat are expressed as required by section 126(3) of the act and as explained in the legend.

June 1, 1971
Date

EDMANDS ENGINEERING, INC.
1501 West Thomas Street
P.O. Box 580
Bay City, Michigan

Glenn F. DeLaMater
Glenn F. DeLaMater, Vice-President



PROPRIETOR'S CERTIFICATE

We, as proprietors, certify that we caused the land embraced in this plat to be surveyed, divided, mapped and dedicated as represented on this plat and that the road is dedicated to the public use and that the public utility easements are private easements and that all other easements are for the uses shown on the plat.

Witnesses

Dennis B. Chivva
DENNIS B. CHIVVA
Harold L. Bannister
Harold L. BANNISTER

X Thomas L. Clark, S.
Thomas L. Clark
Box 14119
Route 2
Hale, Michigan 48739

Cecelia M. Clark, S.
Cecelia M. Clark
Box 14110
Route 2
Hale, Michigan 48739

ACKNOWLEDGEMENT

State of Michigan)
Iosco County) S.S.

Personally came before me this 8 day of Dec, 1971, the above named Thomas L. Clark and Cecelia M. Clark, his wife, to me known to be the persons who executed the foregoing instrument and acknowledged that they executed the same as their free act and deed.

Dennis B. Chivva
DENNIS B. CHIVVA
Notary Public

Iosco County, Michigan
My commission expires: July 15, 1975

COUNTY TREASURER'S CERTIFICATE

The records in my office show no unpaid taxes or special assessments for the five years preceding December 9, 1971, involving the lands included in this plat.

Ruth A. Hensley
RUTH A. HENSEY
Deputy Treasurer

Certified true copy of recorded plat.

Allison Green
ALLISON GREEN
STATE TREASURER
By Richard E. Lomax
Richard E. Lomax, Plat Examiner
Date March 7, 1972

COUNTY DRAIN COMMISSIONER'S CERTIFICATE

Approved on DEC. 8, 1971 as complying with Section 192 of Act 288, P.A. 1967 and the applicable rules and regulations published by my office in the County of Iosco.

John A. Mielock
John A. Mielock

CERTIFICATE OF COUNTY ROAD COMMISSIONERS

Approved on DEC. 15, 1971 as complying with Section 183 of Act 288, P.A. 1967 and the applicable published rules and regulations of the Board of Road Commissioners of Iosco County.

Henry M. Conley
Henry M. Conley
Chairman

Arthur J. Aulerich
Arthur J. Aulerich
Vice-Chairman

HEATON F. KILBY
HEATON F. KILBY
Member

CERTIFICATE OF MUNICIPAL APPROVAL

I certify that this plat was approved by the Township Board, of the Township of Plainfield, at a meeting held on Jan 14, 1972 and was reviewed and found to be in compliance with Act 288, P.A. 1967. This plat was approved by the District Health Department No. 2 on MAY 19, 1971.

Frances Hansen
Frances Hansen
Clerk FRANCES HANSEN

COUNTY PLAT BOARD CERTIFICATE

This plat has been reviewed and is approved by the Iosco County Plat Board on Jan 20, 1972 as being in compliance with all of the provisions of Act 288, P.A. 1967, and the plat board's applicable rules and regulations.

Albert H. Buch
Albert H. Buch
Chairman

Edward J. Nalkie
Edward J. Nalkie

D. Keith Repas
D. Keith Repas
Clerk

RECORDING CERTIFICATE

State of Michigan)
Iosco County)

This plat was received for record on the 23 day of Feb, 1972 at 1:04 P.M. and recorded in Liber 14 of plats on Pages 10-11.

Albert H. Buch
Albert H. Buch, Register of Deeds

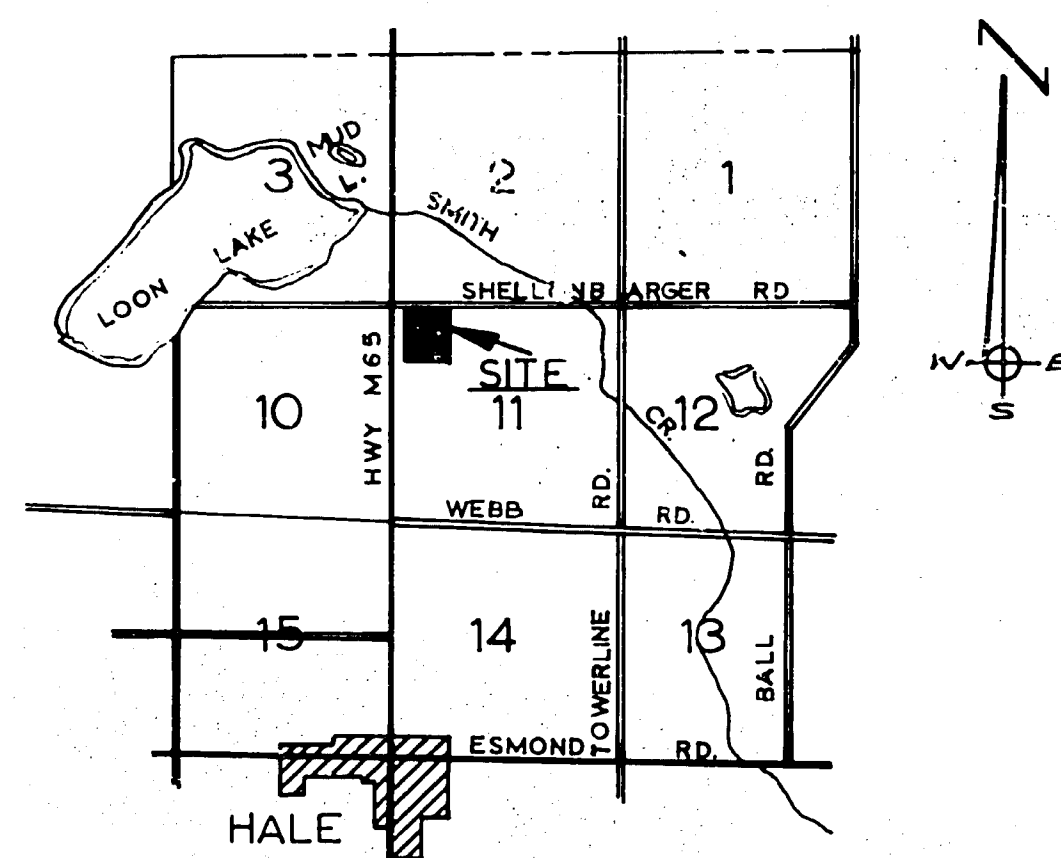
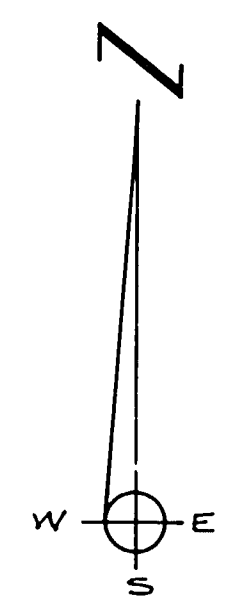
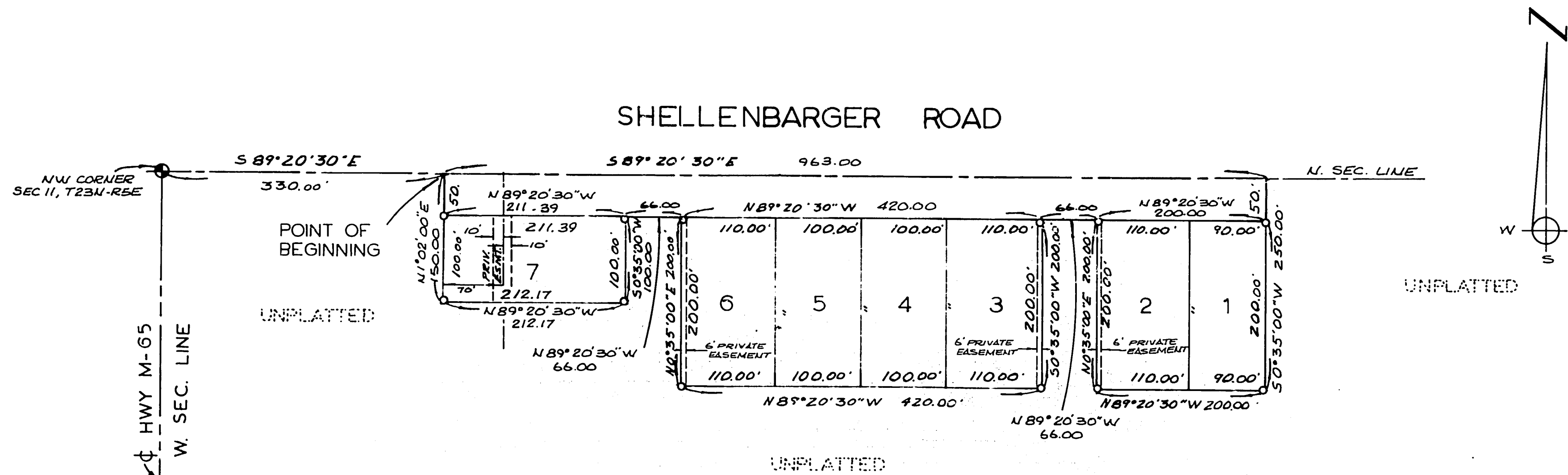
52687

BOB-O-LINK PARK SUBDIVISION

PART OF THE NW 1/4 OF THE NW 1/4 OF SEC. 11, T 23 N,
R 5E, PLAINFIELD TWP., IOSCO CO., MICHIGAN.



SCALE 1"=100'



VICINITY MAP

LEGEND

- 1- ALL DIMENSIONS ARE IN FEET
- 2- CONCRETE MONUMENTS ARE SET AT POINTS MARKED THUS 'O'
- 3- LOT CORNERS HAVE BEEN MARKED WITH 1/2" IRON RODS 18 INCHES IN LENGTH
- 4- BEARINGS AS SHOWN ARE REFERENCED TO M.D.S.H. ALIGNMENT FOR HWY. M-65 WEST OF THIS SUBDIVISION.

52687