

2023 - 2027  
IOSCO COUNTY

# PLAINFIELD TOWNSHIP PARKS & RECREATION MASTER PLAN



DRAFT

## ACKNOWLEDGEMENT

A public hearing on the 2023-2027 Parks and Recreation Master Plan was held on **December 14, 2022** at the Parks and Recreation Board meeting. The Parks and Recreation Master Plan was adopted by the Plainfield Township Board on **December 21, 2022.**

### PLAINFIELD TOWNSHIP BOARD

Fred Lewis, Supervisor

Sue Reilly, Clerk

Roma J. Bassi, Treasurer

Dianne Allen, Trustee

Roger Houthoofd, Trustee

### PARKS AND RECREATION BOARD

Paul Olmstead

Daryl Johnson

Robert Alward

Deborah Toth

Don McDonnell

Angela Barclay

Roger Houthoofd (Board Trustee)

# TABLE OF CONTENTS

## 01 INTRODUCTION

Introduction	4
--------------	---

## 02 COMMUNITY PROFILE

Regional Location	6
Demographics	7

## 03 ADMINISTRATIVE STRUCTURE

Introduction	10
Township Structure	10
Additional Relationships	11

## 04 RECREATION INVENTORY

Natural Features Inventory	14
Parks and Recreation Inventory	17
Park Service Area and Classification	18
Township Park Facilities	20
Other Facilities	37
Funding Opportunities	38

## 05 COMMUNITY INPUT

Overview	40
Survey Results	40

## 06 GOALS AND OBJECTIVES

Introduction	47
Goals and Objectives	47
Action Plan	49

## 07 PLANNING PROCESS

Process	51
Review and adoption	51

## APPENDIX

A - Funding Sources	
B - Survey Results	
C - Adoption Documents	

# INTRODUCTION

## TABLE OF CONTENTS

**4** INTRODUCTION

DRAFT

## INTRODUCTION

Plainfield Township has developed this Parks and Recreation Master Plan to serve as a guide for future decision-making regarding recreation facilities improvements and the development of new recreation opportunities. This document is the basis for the implementation of new improvements and initiatives that will meet the recreational goals and interests of the Township and its constituents. The Plainfield Township Parks and Recreation Board has been fundamental in providing information about the community and guidance for the direction of the Parks and Recreation Master Plan throughout the planning process.

Before any Recreation Plan is adopted and enacted, it is critical to have an understanding of the needs of the residents, the recreation opportunities that are available, the demographic characteristics of an area, and the programs, projects, and facilities that are best suited to the community. The goals, objectives, and action items in this Parks and Recreation Master Plan are largely based on the careful consideration of public input and suggestions from Township residents, Township officials, and other community stakeholders. Community input was a critical component to this Plan, and all the voices in the Township have united to develop a Parks and Recreation Master Plan with the overall goal of enhancing the quality of life for the community members and visitors of the Township.

The foundation for the development of the Township Parks and Recreation Master Plan was based on the following goals:

- Involve the community throughout the process of updating the Parks and Recreation Master Plan.
- Identify and map existing Township-owned/operated recreation facilities.
- Build common ground among the Plainfield Township residents and stakeholders in addressing the future recreational needs, increased safety at parks, and priorities of the Township.
- Enable the Township to be eligible for financial assistance based on the Parks and Recreation Plan.
- Facilitate interagency collaboration in establishing parks and recreation goals, objectives, and actions in partnership with Iosco County, local school districts, and others.
- Support the implementation of improvements for barrier-free or universal access to Township parks and recreation sites.

Overall, Plainfield Township officials intend to use this Plan to guide their work on all future recreation and parks projects within the Township. It is also a strategic document that articulates specific goals in consideration of parks and recreation acquisition and improvement projects. This Plan is developed in accordance with the guidelines for the development of Community Parks and Recreation Plans published by the Michigan Department of Natural Resources (DNR). A five-year, DNR-approved Recreation Plan is necessary for the Township to pursue DNR-administered grants. This Recreation Plan is written for Plainfield Township and covers all aspects of recreation within the community over five years from January 2023 – December 2027.

# COMMUNITY PROFILE

## TABLE OF CONTENTS

**6** REGIONAL LOCATION

**7** DEMOGRAPHICS

DRAFT

# COMMUNITY DESCRIPTION

## REGIONAL LOCATION

Plainfield Township is located in the northwest corner of Iosco County, just over 23 miles inland from Lake Huron. It is a northern Michigan community with vast open spaces, large woodlands, pristine rivers, and dozens of lakes. It is centered around the City of Hale, the primary business hub of the Township. The Township's location offers convenient access to M-65, and M-55, and is just over 32 miles from the City of West Branch and access to I-75. The Township is L-shaped and is equivalent to three townships in size. Adjacent to Alcona County to the north, Oscoda County to the northwest, and Ogemaw County to the west. Map 1 highlights the Township within Iosco County.

MAP 1 - REGIONAL LOCATION MAP



## DEMOGRAPHICS

According to the U.S. Census, the 2010 population in Plainfield Township was 3,799 and in 2020 it was 3,350. In the last decade, there was a decrease of 449 residents.

Table 1, below, provides other significant 2010 and 2020 Decennial Census data for Plainfield Township, Iosco County, and the State of Michigan. Of note is the lower percentage of renters found in the Township as compared to the County and State. In the Township, 10% of the occupied housing units are rented compared to 19.2% in Iosco County and 28% in the State. Renters tend to have a greater need for open space and public park facilities, as they usually live in denser housing, such as apartment complexes, that do not offer large yards or open space.

Another factor to note is that the Township has the highest median age at 58.6 years, as compared to the County and the State. As the population changes, those residents' recreational needs and wants may change as well, towards more passive facilities such as paths and trails instead of playgrounds. Older residents in the Township account for 36% of the population and tend to have different recreational needs compared to younger residents.

Within the Township is a wide range of age groups who all have their own recreational needs. Park facilities can create a multigenerational link between individuals in these groups, and across all demographic groups. They provide gathering places, create exercise opportunities, promote civic participation, and improve the quality of life in an area.

TABLE 1 - DEMOGRAPHICS

Select Census Date for the Plainfield Township Area, Iosco County, and Michigan			
	Plainfield Township	Iosco County	Michigan
Population – 2010 Census	3,799	25,887	10,077,331
Population – 2020 Census	3,350	25,237	9,883,640
Percent of population 65 and older	36.0%	30.1%	18.1%
Percent of population under 18	17.0%	17.2%	21.4%
Median Age	58.6	52.9	39.8
Percent with a bachelor's degree or higher	14.4%	15.4%	30.0%
Median household income	\$39,630	\$42,628	\$59,234
Average household size	2.1	2.1	2.5
Median housing value	\$99,500	\$98,200	\$162,600
Renter-occupied housing as a % of total occupied units	10.0%	19.2%	28.0%
Percent of individuals below the poverty line	15.0%	14.6%	13.7%



# ADMINISTRATIVE STRUCTURE

## TABLE OF CONTENTS

- 10** INTRODUCTION
- 10** TOWNSHIP STRUCTURE
- 11** ADDITIONAL RELATIONSHIPS

DRAFT

## ADMINISTRATIVE STRUCTURE

### INTRODUCTION

The following section describes how parks and recreation facilities in the Township are organized and maintained. This section will also include an overview of the Township's organizational structure, funding, additional partnerships, programming, and events/festivals.

### TOWNSHIP STRUCTURE

#### BOARD OF TRUSTEES

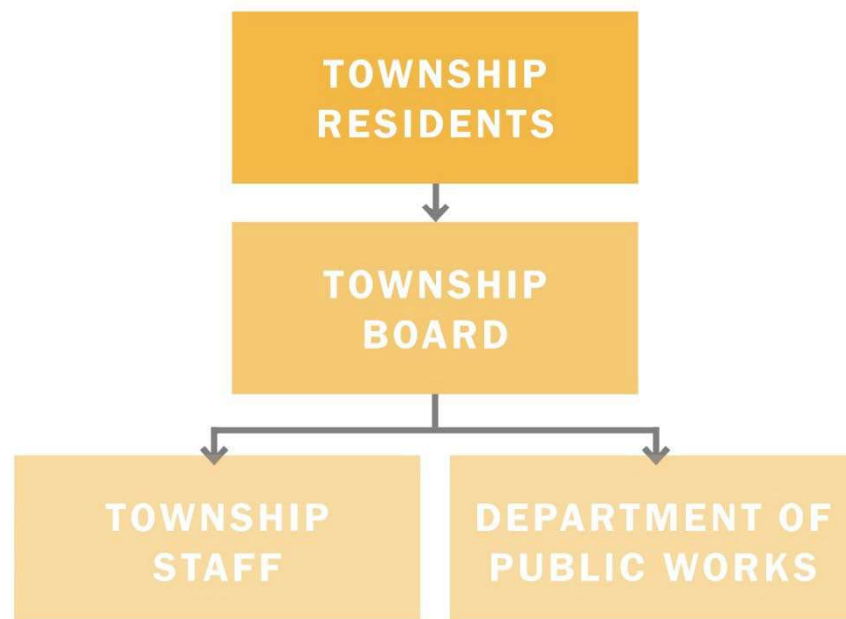
Plainfield Township is governed by a Board of Trustees. The Supervisor serves as the Chairperson of the Board and carries out the functions and duties prescribed by the Board, which are necessary for the governing of the Township. All Board members are elected officials. The graphic below outlines the government hierarchy in the Township. The board meets on the third Wednesday of each month.

#### PARKS AND RECREATION BOARD

The Plainfield Township Parks and Recreation Board was formed in 1994, pursuant to the Township Park Act 157 of 1905 and was joined with the Planning commission in 2019. The Board consists of up to six members who are appointed by the Township Board of Trustees. At least one Trustee must serve on the Parks and Recreation Board.

The Parks and Recreation Board meets on the second Wednesday of each month to make policy decisions regarding parks and recreation in Plainfield Township. Park operations and maintenance are overseen by the Department of Public Works staff.

FIGURE 1 – ADMINISTRATIVE STRUCTURE



## FUNDING AND BUDGETS

The Township parks are funded by the general operating fund. In the 2023 budget, approximately \$55,000 is allocated for operations and maintenance and \$20,000 is allocated for capital expenditures.

TABLE 2 – 2022-2023 PARKS AND RECREATION BUDGET

	Current Year - 2022	Next Year - 2023
Operations and Maintenance	50,000	\$55,000
Programming	\$5,000	\$5,000
Capital Expenditures	\$20,000	\$75,000
Total	\$75,000	\$135,000

## ADDITIONAL RELATIONSHIPS

### VOLUNTEERS

Within the Township are three important volunteer groups that play a significant role in the Township.

- **Lions Club:** A group of volunteers that want to make a difference in their community. They host different events throughout the year such as murder mystery dinners, raffle dinners, and service projects like free eye screenings.
- **American Legion, VFW, and VVA:** These are America's largest veterans service organizations. They offer a variety of programs, services, host fundraising events, and make contributions to the community.
- **Knights of Columbus:** A catholic fraternal organization whose mission is to help families and be a resource for them.

### SCHOOLS

The School District and Township have a working relationship. The schools continue to use the old school building, now the location of the Township offices. The fields and the gym are used as overflow spaces when needed by school teams and programs. They will continue to work closely together to maintain the recreation facilities as the fields are still kept by the school's ground/maintenance staff.

School facilities include playgrounds, a football field, and softball/baseball fields.



## PROGRAMMING

The Parks and Recreation Board does not provide programming for residents, however, two groups, the Hale Garden Club and Hale Senior do offer programming within the Township.

Hale Garden Club is part of the beautification program which is funded and maintained by the Hale Garden Club. The Hale Garden Club decorates the downtown planter boxes each year and continues the maintenance and upkeep.

The Hale Senior Center offers activities for senior citizens to participate in. They offer a variety of activities such as crafts, dancing, bingo, and health and wellness programs.

## EVENTS/FESTIVALS

Many festivals take place throughout the year in the Township. These events and festivals are put on by other groups within the Township.

- Mud Jam – Fairgrounds
- Farmer Markets – Town Hall
- County Fair – Every July, Fairgrounds
- Fireworks – Fairgrounds
- Parades – Every Memorial Day, Fourth of July, and Homecoming Parade
- Run like Hale – Long Lake
- Jam Fest – Eagle Point Plaza
- Car Show – American Legion Building
- Horse Pull – Every Fourth of July
- Corn Hole Tournament – Fairgrounds



# RECREATION INVENTORY

## TABLE OF CONTENTS

- 14** NATURAL FEATURES INVENTORY
- 17** PARKS AND RECREATION INVENTORY
- 18** PARK SERVICE AREA AND CLASSIFICATION
- 20** TOWNSHIP PARK FACILITIES
- 37** OTHER FACILITIES
- 38** FUNDING OPPORTUNITIES

DRAFT

## NATURAL FEATURES INVENTORY

Plainfield Township contains ample natural amenities such as lakes, rivers, and woodlands. The Parks and Recreation Commission wishes to preserve the natural features available to the community while utilizing them for recreation and relaxation. Residents and visitors can take advantage of these assets through the seven parks located within the Township. There are many natural assets located within the Township boundary. The eastern portion of the Township is mostly comprised of evergreen forest with pockets of grassland, and deciduous forest. The western portion of the Township is mostly deciduous forests with a mix of other trees. Surrounding the lakes are woody wetlands, with small areas of emergent wetlands. In the northeast corner are two areas of shrub/scrub. A natural features inventory is useful to recreation planning because it highlights existing resources showing where gaps may be located. Furthermore, the natural features inventory map can be used as a guide for any future park acquisitions or park and trail development. Natural features include things such as wetlands, water bodies, and wooded land.

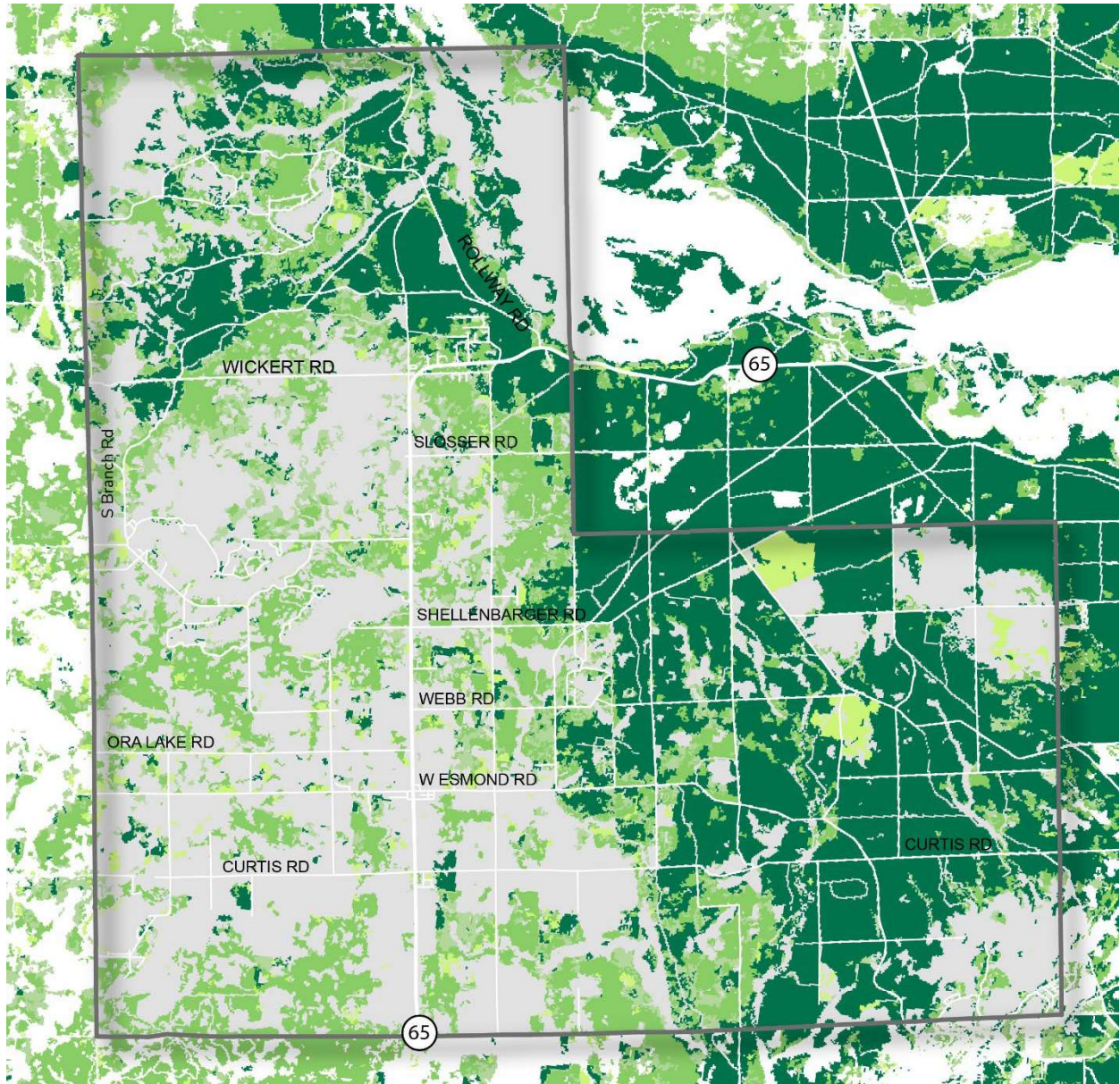
Waterbodies are another part of natural features, the parks within the Township are based around their lakes. While small in size, all have waterfront access with swimming beaches, picnicking areas, and parking. Most of the parks that have parking actually draw residents from the entire Township and beyond. The lakes are an asset to Plainfield Township, so much that people outside of the Township notice and take advantage of them. The Parks and Recreation Department is actively making improvements to the community.

On the following pages are a woodlands map and a wetlands map.

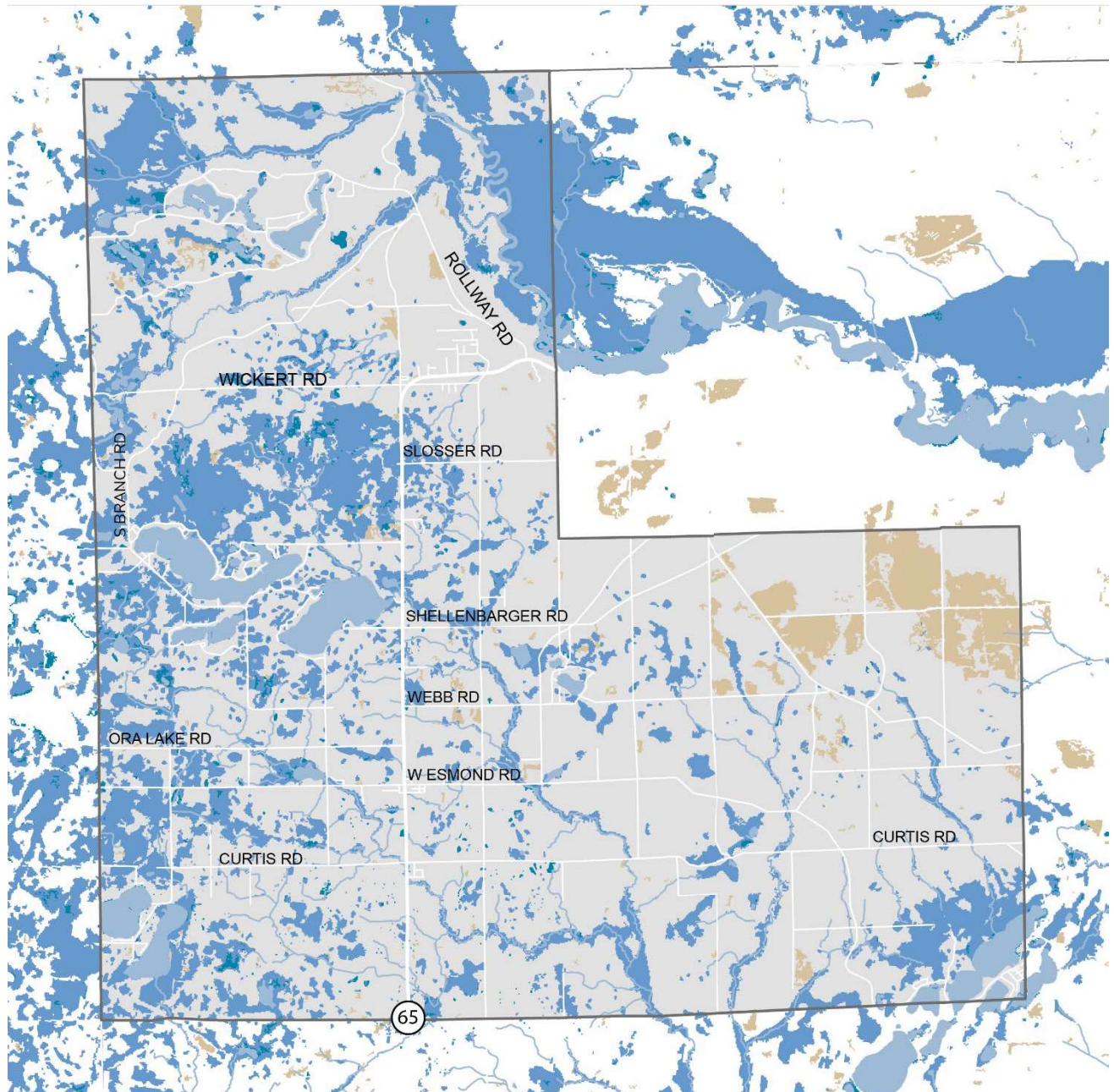


Huron National Forest

MAP 2 – WOODLANDS



MAP 3 – WETLANDS





## PARKS AND RECREATION INVENTORY

The following inventory describes the parks in the Township. This inventory was updated by the planning consultants in the summer of 2022 and verified by Township staff. The text below includes an in-depth description of parks located within the Township, park classifications, and ADA accessibility ratings. Table 4, on page 35, summarizes park amenities in a tabular form. In this chapter, there is also a brief description of other recreation facilities within the Township and region.

### ACCESSIBILITY

Creating a park system that is safe, accessible, and usable to all individuals, including those with disabilities, is essential. The DNR has developed a grading system to identify parks and facilities which are most and least handicap accessible and useable, based on the American Disabilities Act (ADA) guidelines. The accessibility grading system uses a five-point system ranging from 1 to 5. See Table 3, below.

In the summer of 2022, Township staff, with assistance from the planning consultant, updated the ADA compliance information with the update of this recreation plan. There are a few sites and undeveloped land that are not ADA accessible. However, the Township recognizes the importance of equal access for all citizens and is dedicated to improving accessibility at each of its parks when improvements are made. This includes parking, paths, restrooms, activity areas, amenities, and signage.

TABLE 3 – DNR ACCESSIBILITY GRADING SYSTEM

DNR Accessibility Grading System for Parks and Recreational Facilities	
Accessibility Grade	Definition
1	None of the facilities/park areas meet accessibility guidelines
2	Some of the facilities/park areas meet accessibility guidelines
3	Most of the facilities/park areas meet accessibility guidelines
4	The entire park meets accessibility guidelines
5	The entire park was developed/renovated using the principles of universal design

## PARK SERVICE AREA AND CLASSIFICATIONS

A recreation inventory is the foundation for developing an understanding of the Township's recreation needs, deficiencies, and future plans. An inventory provides a snapshot of all the available facilities within a community along with details about the types of activities and features. The following classification system is adapted from the National Recreation and Parks Association (NRPA) guide. It recognizes types of parks based on size, service area, facilities, and uses. Each park in Plainfield Township is classified as a neighborhood park, a community park, or a regional park. The NRPA classifies several other park types, but they are not all applicable to Plainfield Township.

### MINI PARKS

Are the smallest park classification, they address limited, isolated, or unique recreational needs. They are usually between 2,500 square feet and one acre in size. The Mini Parks in the Township are:

- Chain Lake Beach
- Jose Lake Beach

### NEIGHBORHOOD PARKS

Parks in this classification are the most basic park unit of a system and serve as the recreation and social focus of a neighborhood. Neighborhood parks are easily accessible to neighborhood populations and geographically centered within safe walking distance and bike access. Typically, neighborhood parks are 5 to 10 acres in size and can service a population of approximately 5,000 residents. The parks have a service location of  $\frac{1}{4}$  to  $\frac{1}{2}$  mile distance. National standards recommend 1.0 acre of neighborhood parks per 1,000 residents.

Plainfield Township provides 3.83 acres of mini-parks and neighborhood park space, which is just over the requirements of the national standards (3.5 acres). The neighborhood parks in the Plainfield Township are:

- Londo Lake Park
- Loon Lake Park

### COMMUNITY PARKS

Community parks are intended to serve several neighborhoods and usually serve a broad range of uses. The typical park's size is 30 acres or more. There are two parks classified as community parks that are smaller than 30 acres. However, they are included in this category because of the broad population base they serve and the facilities/intended use of the park. The national classification system recommends 5 acres per 1,000 residents. The Community Parks within the Plainfield Township total 18 acres and include:

- Plainfield Township Park
- Long Lake Park

Compared to national standards Plainfield Township is in line in terms of acres for Community Parks. The two Community Parks currently total 18.0 acres in size. Based on the standards they should have at least 17.5 acres.

## REGIONAL PARKS

Regional parks are typically classified as serving several communities and being large in size, typically 200 acres or more. They are land that is set aside for preservation, natural resources, environmental significance, use, or historic/cultural interest. While the national standard acreage is large, and the Township regional parks are smaller, the NRPA does not only categorize parks by size. A park can be small but have a regional use or cultural significance. This is the case in Plainfield Township. National Standards suggest 5 acres per 1,000 residents. Regional Parks are identified by the service area of Greater Plainfield Township/Iosco County Region (GR) in the following inventory section.

Though smaller than 200 acres, the Loon Lake Nature Park provides a variety of outdoor recreational activities that draws a regional population. The Township has a total of 122 acres of regional parkland which is an excess of 82 acres in comparison to the standard amount required. In addition to the regional parks, the Township also has one regional trail system. The Iosco Exploration Trail segment, phase two of the plan is 2-miles long and connects Loon Lake Park to Kokosing Road to be a part of the 34 miles of pathways connecting to the State of Michigan's Iron Belle Trail network.



Loon Lake Park

# TOWNSHIP PARK FACILITIES

MAP 4 - RECREATIONAL FACILITIES



## LEGEND

-  PLAINFIELD TOWNSHIP
-  WATER BODIES
-  PARK
  -  Neighborhood Park
  -  Community Park
  -  Regional Park
-  PROPOSED IRON BELLE TRAIL

## CHAIN LAKE BEACH

*Type:* Mini Park

*Acreage:* 0.50

*ADA Accessibility Grade:* 1

*Location:* 7202 Chain Lake Dr, South Branch, MI 48761

### Description:

Chain Lake Beach is a small park located in the northern portion of the Township on Chain Lake. This park property is primarily used by neighborhoods adjacent to the parks for swimming and beach access.

### Recreational Facilities:

- Swimming beach
- Picnic area with grills



MAP 5 - CHAIN LAKE BEACH



## JOSE LAKE BEACH PARK

**Type:** Mini Park

**Acreage:** 0.50

**ADA Accessibility Grade:** 1

**Location:** Off Nicole Drive, 44.481310, -83.833165

**Description:**

Located within a neighborhood is a small, 0.50 acres that has a small beach with waterfront access to Jose Lake.

**Recreational Facilities:**

- Swimming beach



MAP 6 - JOSE LAKE BEACH PARK





## LONG LAKE PARK

**Type:** Community Park

**Acreage:** 10.0 + (Leased from the DNR)

**ADA Accessibility Grade:** 1

**Location:** 4901 Cherokee Ave, Hale, MI 48739

### Description:

Long Lake Park, located off M-65, is one of the larger parks in the Township. The park attracts people from the entire community. It provides access to the lake via a boat launch and swimming beach.

### Recreational Facilities:

- Swimming beach
- Picnic area with grills
- Boat launch

### Support Facilities:

- Restrooms
- Parking



MAP 7 - LONG LAKE PARK



## LOON LAKE NATURE PARK

*Type:* Regional Park

*Acreage:* 122.0

*ADA Accessibility Grade:* 5

*Location:* 4690 M-65, Hale, MI 48739

### Description:

Loon Lake Nature Park is located off M-65 down Wild Cherry Lane. Today residents can find 122 acres full of activities. In 2011 the Township acquired 110 acres to expand upon the park's existing 12 acres to allow for a non-motorized trail to connect the park to Kokosing Road.

### Recreational Facilities:

- Nature park
- Swimming beach
- Boat launch and dock
- Overlook
- Picnic area
- Non-motorized trail
- Pathways
- Pavilion
- Fishing

### Support Facilities:

- Restrooms
- Parking



MAP 8 - LOON LAKE NATURE PARK



## LOON LAKE PARK

*Type:* Neighborhood Park

*Acreage:* 1.19

*ADA Accessibility Grade:* 1

*Location:* Off Hillsdale Dr, 44.402460, -83.825275

### Description:

Loon Lake Park is the smaller of the two parks located along the Loon Lake shoreline. Like many of the other Township parks, the park provides the community with a swimming beach and waterfront access.

### Recreational Facilities:

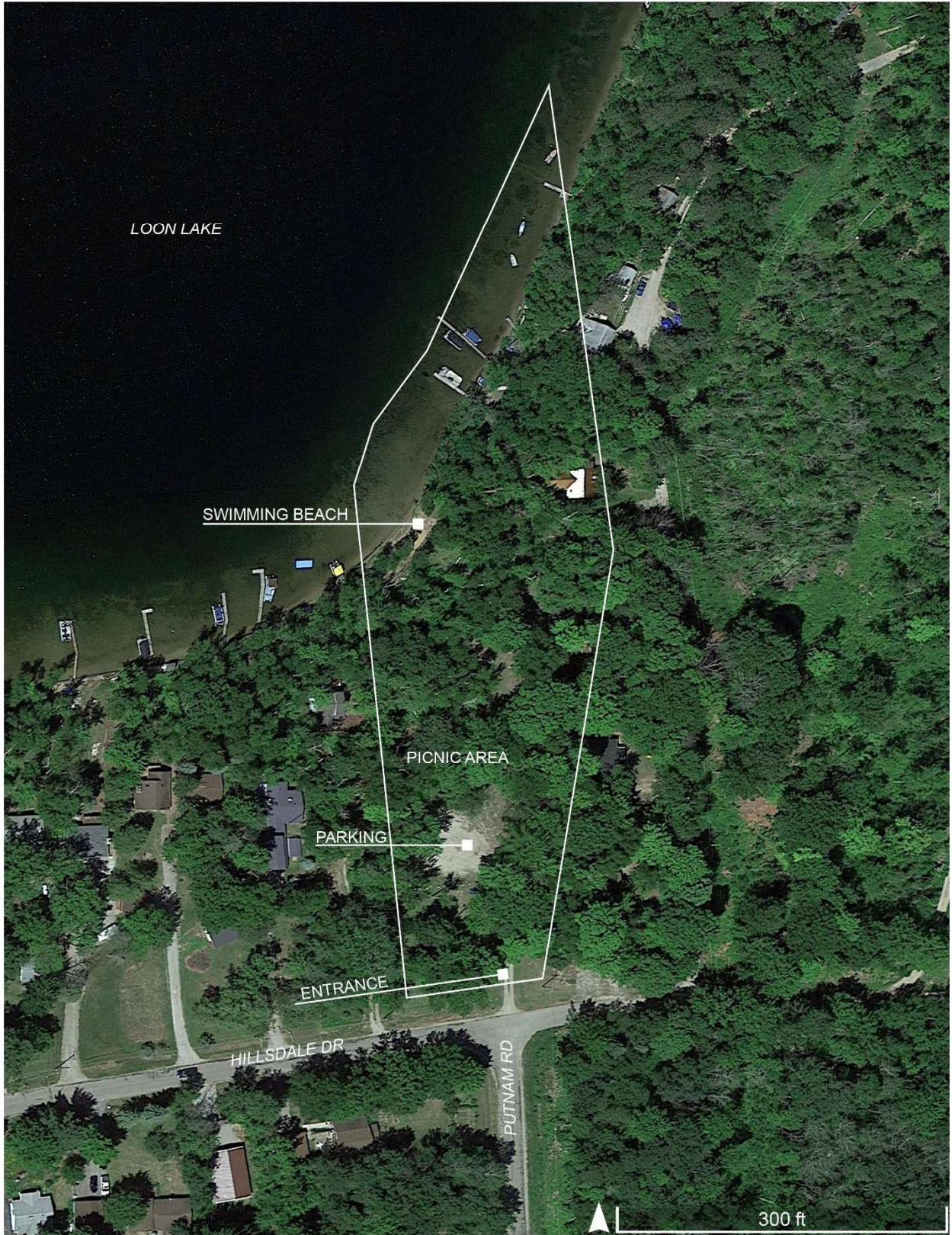
- Swimming beach
- Picnic area with grills

### Support Facilities:

- Parking



MAP 9 - LOON LAKE PARK



## PLAINFIELD TOWNSHIP PARK

**Type:** Community

**Acreage:** 8.0

**ADA Accessibility Grade:** 3

**Location:** 220 N Washington St, Hale, MI 48739

### Description:

Plainfield Township Park is in the center of the Township, situated between the Township Firehall and the Township Library. Behind the park are the County fairgrounds and recreational land owned by the school district. This all-purpose park meets the community's recreational needs. The Township continues to explore possibilities on how to improve this park. Recently, a coaching pitch baseball diamond was added to the Plainfield Township Park, and an expansion on the existing playground area to add a section for 2 – 5-year-old children.

### Recreational Facilities:

- Senior citizens retirees center (with rentable space)
- Playground
- 1 tennis court (soon to be pickleball courts)
- 1 baseball diamond
- Portable skate park (removed in winter)
- Pavilion
- Picnic tables

### Support Facilities:

- Restrooms
- Paved gravel parking



MAP 10 – PLAINFIELD TOWNSHIP PARK





## LONDO LAKE WEST PARK

*Type:* Neighborhood

*Acreage:* 1.64

*ADA Accessibility Grade:* 1

*Service Area:* 2625 Plainfield Rd, Hale, MI 48739

### Description:

Londo Lake West Park is located on the west side of Londo Lake in the southwest corner of Plainfield Township. Though this park is small in size it offers a beautiful view of the lake with lakefront access.

### Recreational Facilities:

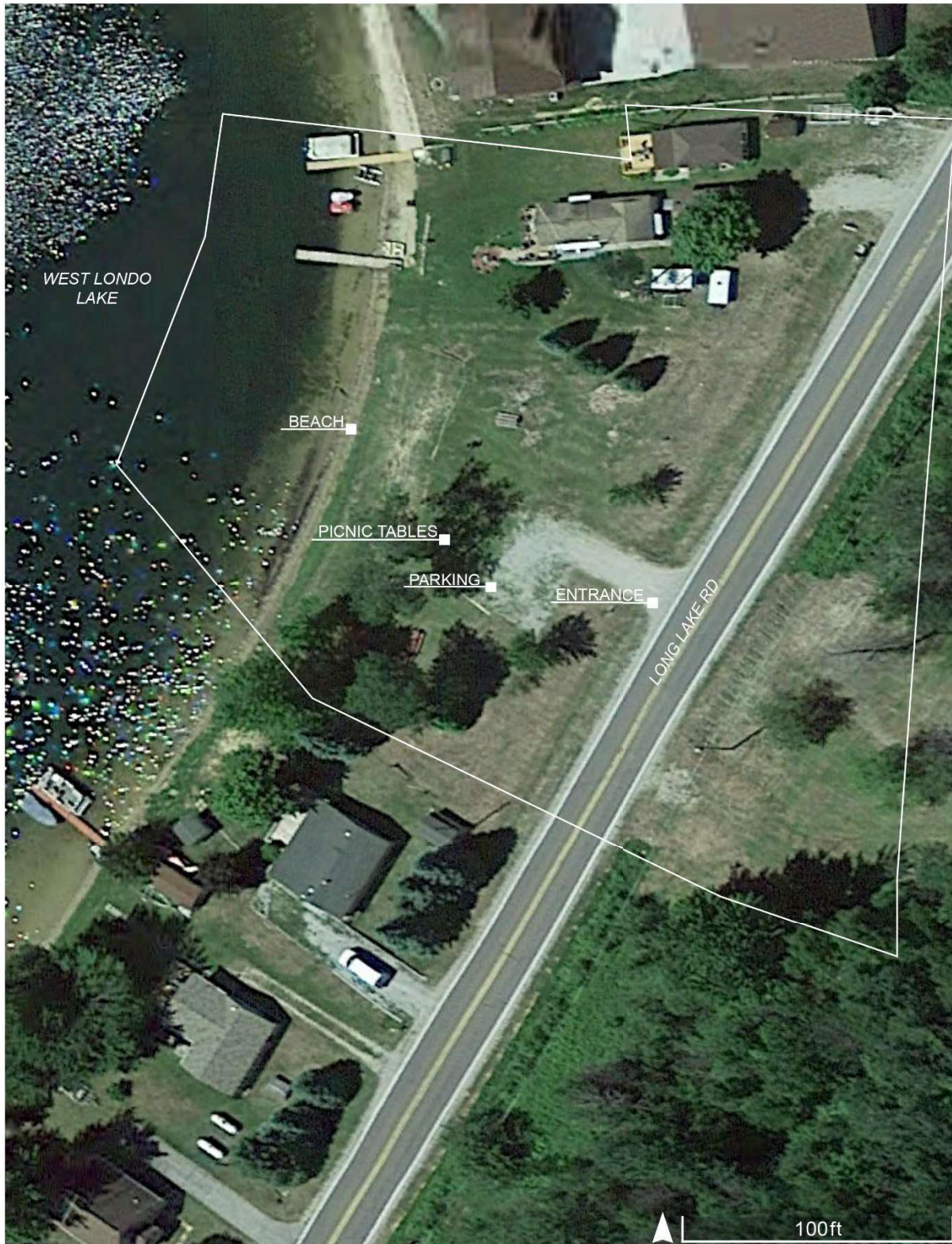
- Swimming beach
- Picnic area with grills

### Support Facilities:

- Parking



MAP 11 - LONDO LAKE WEST PARK



## RECREATION INVENTORY

TABLE 4 – PARKS AND RECREATION INVENTORY

PLAINFIELD TOWNSHIP PARKS AND RECREATION							
	Chain Lake Beach	Jose Lake Beach	Long Lake Park	Loon Lake Nature Park	Loon Lake Park	Plainfield Township Park	Londo Lake West Park
<b>ADA Accessibility Rating</b>	1	1	1	5	1	2	1
<b>Classification</b>	N	N	C	R	N	C	N
<b>Acreage</b>	.5	.5	10+	122	1.19	8	1.64
Swimming Beach	x	x	x	x	x		x
Rec Center						x	
Playground						x	
Tennis Court						x	
Ball Diamond						x	
Skate Park						x	
Pavilion						x	
Picnic Tables			x	x	x	x	x
Grills			x				x
Boat Launch			x	x			
Dock				x			
Overlook				x			
Pathways				x			
Fishing Access							
Parking	x		x	x	x	x	x
Restrooms			x	x		x	

## COMPARISON TO STANDARD

The Township has committed to taking a steady and consistent approach to developing park facilities that provide lifelong recreation options for their residents. When considering the level of service, it is important to note that Plainfield Township provides de facto recreation services and facilities to a population greater than its residential population. Therefore, it is important to consider this broader need in terms of demand and not just classification standards for parkland per 1,000 residents.

The National Recreation and Park Association (NRPA) has published typical recreation facility standards that specify facility service areas, the number of facilities needed to service the population, and the land area needed. These standards can be used in conjunction with the acreage standards to further identify Plainfield’s recreation needs. Table 5 provides a comparison of the Township’s public recreation facilities against the NRPA’s published recreation facility standards. In general, the Township rates very well compared to the DNR’s suggested facility development standards regarding the acreage of parkland necessary for their population. The table only indicates excess parkland in Neighborhood Parks, Community Parks, and Regional Parks.

In addition to the standards outlined in the table below, more recent park guidelines indicate that officials must also consider the parks and recreation “Level of Service” desired by the residents of a community. If the Township’s residents’ needs are met with the existing parkland and facilities, then that amount is sufficient, regardless of the standards or acreage suggestions. This is why the community input portion of a recreation plan is so important. While it appears that the Township has enough recreation land, the community input results indicated some deficiencies in parks such as restrooms, walking trails, natural spaces, and water access to the various lakes. The Parks and Recreation Committee needs to understand the wishes of the community it serves to provide the appropriate level of service.

TABLE 5 – COMPARISON TO STANDARDS

	Standard	Township Park Acreage	Standard Amount	Deficiency/ Excess
<b>Neighborhood Parks</b>	1 acre/1,000 residents	3.83	3.5	+0.33
<b>Community Parks*</b>	5 acres/1,000 residents	18	40	-22
<b>Regional Parks</b>	5 acres/1,000 residents	122	40	+82
<b><i>Total</i></b>		<b><i>140</i></b>	<b><i>88</i></b>	<b><i>+60.33</i></b>
Table is based on the 2020 Census Population				

## OTHER FACILITIES

Recreation facilities such as local, county, and state parks provide additional opportunities to Plainfield Township residents. These additional facilities provide residents with a variety of activities and opportunities that include larger acres of land, lakes, camping, recreation centers, and other recreation activities. These facilities are owned and operated by other entities and government agencies. A brief inventory of these facilities is below.

### LOCAL

- Londo Lake East Park Boat Launch

### COUNTY

- American Legion Park
  - Baseball fields (2)
  - Soccer fields (2)
- Iosco County Fairgrounds – Located in Hale, the Fairgrounds have a racetrack, exhibition building, and barn. Throughout the year there are many events that take place at the Fairgrounds.
- Iosco County – Snowmobiling Trails – the County has 94 miles of trails from Oscoda to South Branch, and from Sand Lake to north of the AuSable River. For more information on the trails visit: <https://ioscocountyrecplan.wordpress.com/>

### STATE & FEDERAL

- Round Lake Campground and Boat Launch – U.S. Forest Service
- South Branch Trail Camp – U.S. Forest Service
- Corsair Trail – U.S. Forest Service
- Rollways Park – U.S. Forest Service
- Huron National Forest – Approximately 115,000 acres of the Huron National Forest lies within Iosco County. The vast majority of this land is in the northern half of the County surrounding the Au Sable River. Recreational features and amenities offered include camping, ATV trails, hiking, snowmobiling, boating/canoeing, fishing, cross-country skiing, mountain biking, and horseback riding. Iosco County works closely with the National Forest personnel on development and maintenance of various trails. Some of the larger/more popular recreational features in the Huron National Forest include: Eagle Run Cross-Country skiing and hiking trails, Highbanks Trail System, Largo Springs Interpretive Area, Lumberman’s Monument Visitor Center, Tuttle Marsh, and the Corsair Trails. A location map for these features is included in the appendix.
- Au Sable State Forest – Approximately 9,000 acres of the Au Sable State Forest are located in Burleigh, Sherman, and Alabaster Townships in the southern portion of the County.
- State of Michigan Forest Reserve – The northeast portion of the County contains approximately 16,000 acres of state forest reserve. One of these parcels contains a campground and frontage on Van Etnan Lake. Several miles of ORV trails are located within this area.
- Tawas Point State Park – A 183-acre facility located on Lake Huron, Tawas State Park features camping, fishing, swimming, hiking, and the Tawas Point lighthouse.

## NON-MOTORIZED TRAILS

Communities across the United States are creating regional trail systems in both cities and rural areas to provide a higher quality of life for residents. Trails give residents the opportunity to be more active and healthier, safer while walking or biking on the roads, additional ways to experience their community, and give all users the option of increased mobility in different modes of travel.

### *Why trails are important*

While trails can be a challenge to implement, their positive effects on a community cannot be disputed. It has been proven that trails create a place of pride and sense of ownership in Michigan residents. Trails are also an important driver in the local and regional economy, they increase property values, and provide safe and healthy recreation options. The growing trail trend in Michigan is also reflected in the Township. Trails and pathways are an asset to every community. Trail users have a measurable impact on the local economy. Working with the surrounding townships and other jurisdictions is an effective way to connect with existing systems and expand the non-motorized pathway infrastructure. These projects create a long-term, valuable investment in the community and the opportunity to connect the Township to others in the region, which promotes economic vitality, encourages a healthier lifestyle in residents, and creates a safer travel environment.

## IRON BELLE TRAIL

There are two Iron Belle trail points in the County, the first is the Sunrise Side Pathway which runs parallel to US-23 and the Lake Huron Shoreline. This portion is 13 miles to date and passes through Alabaster Township, Tawas Township, the City of Tawas, the City of East Tawas, Baldwin Township, and AuSable Township. There are 11 more miles of this trail to be completed. The second trail is the Iosco Exploration Trail, this portion has 34 miles proposed to connect the City of Hale, Oscoda Township, AuSable Township, and a small portion of Wilber Township. There are seven phases for this portion of the trail. There is a non-profit organization formed by locals and stakeholders to help plan and fund the trail.

## SHORE TO SHORE TRAIL

The Shore-to-Shore trail is 420 miles stretching from Empire to Oscoda. Along the path are many spurs east to west (10), south (1), and north (5). This trail is for hikers and horseback riders. Trail users can find campgrounds along the trail for overnight stays.

## OTHER NEARBY TRAILS

- Corsair Trail
- Eagle Run
- Highbanks Trail
- Old State House Trail
- Shore to Shore Trail - Segment A
- Tawas Point-Lumbermen's Monument Auto Tour
- Tawas Point-Sandy Hook Nature Trail
- Tawas Point State Park

## FUNDING OPPORTUNITIES

### GRANT HISTORY

Plainfield Township has received the following DNR grants:

**Year:** 2006

**Grant I.D. Number:** TF06-046

**Amount:** \$332,000.00

**Description:** Development of nature trails, boardwalk, boat launch, fishing platforms, picnic area, pavilion, restroom, and parking.

**Year:** 2009

**Grant I.D. Number:** TF09-026

**Amount:** \$428,400.00

**Description:** Acquisition of 110.4 acres of land.

**Year:** 2016

**Grant I.D. Number:** TF16-0142

**Amount:** \$140,000.00

**Description:** Trail constructions and park development on grant acquired land.

### FINANCING POTENTIAL IMPROVEMENTS

Funding for parks and recreation capital improvements can come from a myriad of local, state, and federal programs. Grant funding is available for parks and recreation projects, however, applicants need to target potential agencies and programs very carefully so as to meet the specific criteria required. Appendix A contains a current listing of programs and agencies that can provide funding for parks and recreation projects.



Jose Lake

# COMMUNITY INPUT

## TABLE OF CONTENTS

**40** OVERVIEW

**40** SURVEY RESULTS

DRAFT



# COMMUNITY INPUT

## OVERVIEW

Plainfield Township believes in solid community input as the basis for decisions and capital improvement projects in the Township. Therefore, community input was a focused strategy of the recreation planning process. The input received in the development stage of this plan guides the parks and recreation goals and objectives outlined in this document. The input is crucial to help Township staff and leaders understand the wishes of the residents. To comply with the Michigan Department of Natural Resources Guidelines for Development of Community Parks and Recreation Plans, the Township offered two public input opportunities including an online community input survey and a 30-day review period and a public hearing.

A compilation of all the input received is located in Appendix B. A summary of the various methods of input and feedback received is on the following pages.

The Plan was available for public comment during the required 30-day public review period held between **November 2022** and **December 2022** and concluding with a public hearing on **December 14, 2022** and adopted by the Township Board on **December 21, 2022**.

## SURVEY RESULTS

Plainfield Township created a combined community-wide survey for the Parks and Recreation Plan and the Master Plan. In the summer of 2022, an online survey was available to gather input. The online survey included 24 questions regarding Township conditions, park facilities, and respondent demographics. The community-wide survey received 425 responses.

The survey was assigned the web domain [www.plainfieldtwphalesurvey.com](http://www.plainfieldtwphalesurvey.com). The survey was available on the Township's website and could also be found by scanning the QR code on flyers placed in Township Hall and businesses throughout town.

Key points regarding parks and recreation facilities are summarized on the following pages, and the remaining tables developed for the survey report can be found in Appendix B.

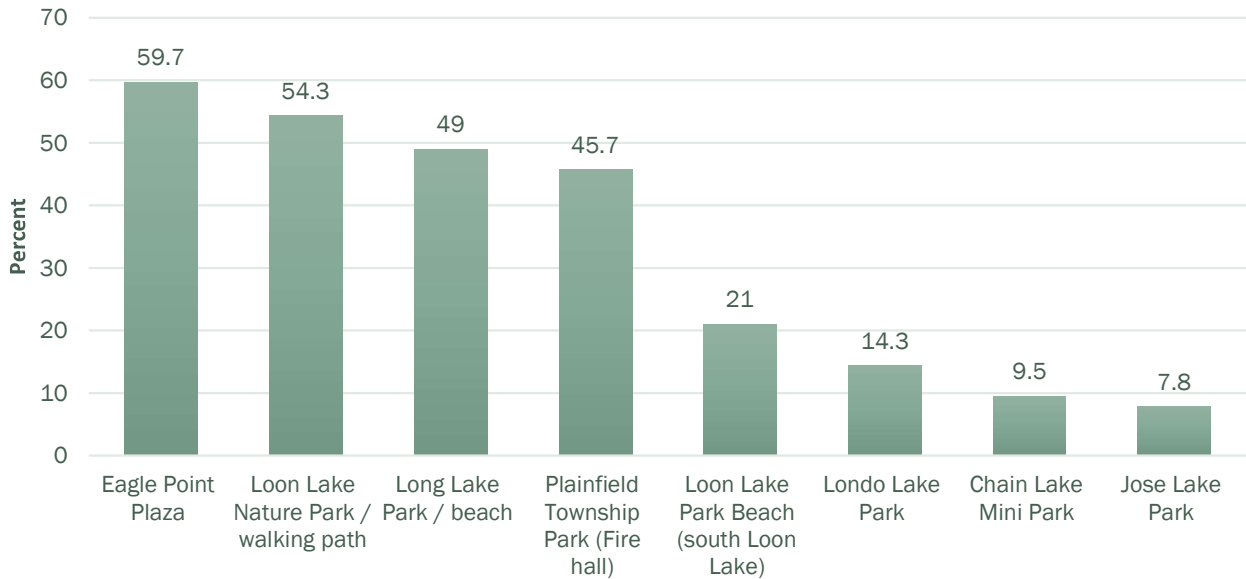
### ABOUT THE RESPONDENTS

- Of the 425 responses, 61% of them were full-time Township residents, and 39% were not Plainfield Township residents.
- 75% of those non-township residents are seasonal residents, 12% are property owners, and there was 13% of write-in responses.
- Every age cohort participated in the survey. The responses below are listed from highest to lowest percentage.
  - **Age 60 – 69:** 39%
  - **Age 70 – 79:** 23%
  - **Age 50 – 59:** 21%
  - **Age 40 – 49:** 7%
  - **Age 80 and older:** 5%
  - **Age 30 – 39:** 3%
  - **Under 18:** 1%
  - **Age 18 – 29:** 1%

PARK AND RECREATION QUESTIONS

**Question 15 asked respondents which of the following parks they visited in the past year.** The most visited parks were Eagle Point Plaza (59.7%) and Loon Lake Nature Park/walking path (54.3%), the remaining responses are listed below.

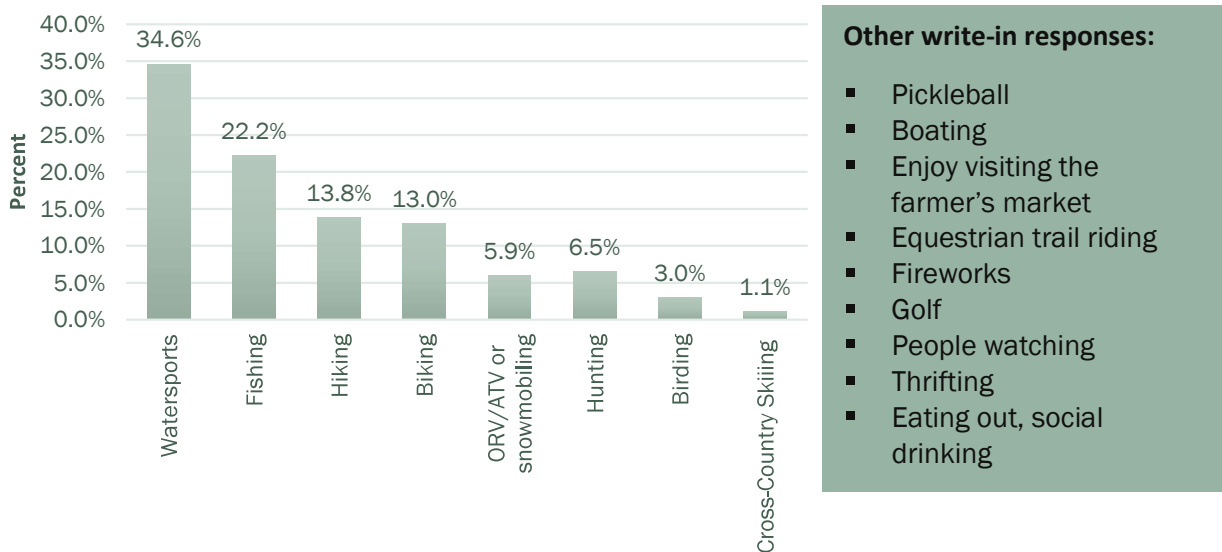
FIGURE 2 – PARK VISITATION



**Question 16 asked respondents what activities they participated in the last year while in the Township.**

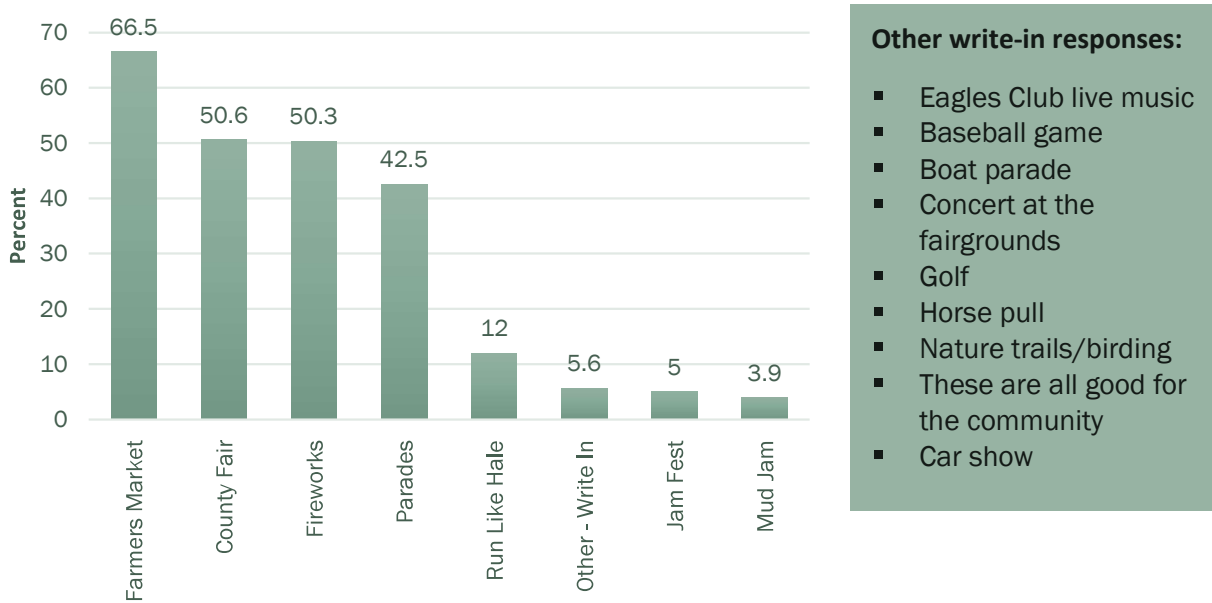
The top response was watersports (34.6%). The remaining responses are listed below.

FIGURE 3 – PARK PARTICIPATION



Question 17 asked respondents what events they participated in the last year while in the Township. The top three responses were Farmers Market (66.5%), County Fair (50.6%), and Fireworks (50.3%). The remaining responses are in the chart below.

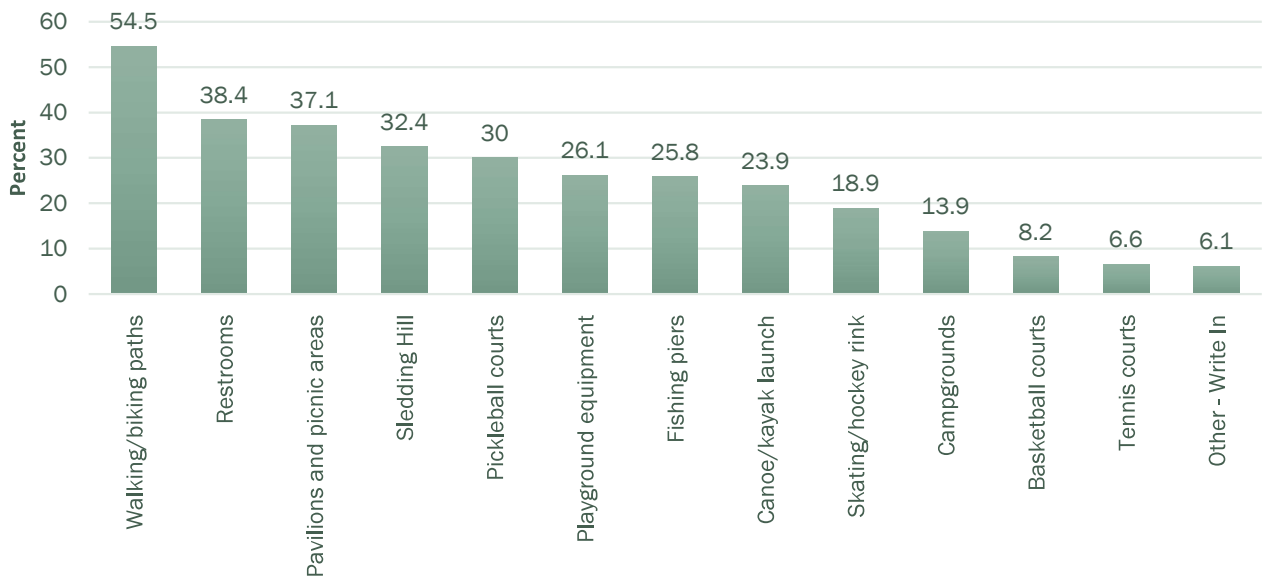
FIGURE 4 – EVENT PARTICIPATION



Question 18 asked respondents what additional facilities/amenities they would like to see added to the Township parks.

The top response was walking/biking paths (54.5%). The remaining responses are in the chart below.

FIGURE 5 – ADDITIONAL FACILITIES/AMENITIES



**Other write-in responses:**

- Tennis Courts
- Pool
  - Swim lessons, open pool, exercise groups
- Dance venues
- New equipment at the Eagle Point Plaza
- Boat Cleaning Stations
- Dog park
- I am too old but we need all events for people.
- Maps showing where to find the above.
- Only things that will be maintained and not destroyed by vandalism
- Outdoor pickleball courts
- Skateboard Park
- Snowmobile trail into town
- Walking path on long lake road

**Question 19** asked respondents to evaluate the following aspects of the Township parks.

Of the respondents, 65% think safety and security are good, 43.4% think the variety of facilities/amenities are good, 56.6% think maintenance and appearance are good, and 29% think handicap accessibility is good.

TABLE 6 – TOWNSHIP FACILITIES

	Very Good	Good	Neutral	Poor	Very Poor	Don't Know	Responses
<b>Safety and Security</b>							
Number	69	196	88	12	6	32	403
Percentage	17.1%	48.6%	21.8%	3.0%	1.5%	7.9%	
<b>Variety of Facilities/Amenities</b>							
Number	22	151	147	34	11	33	398
Percentage	5.5%	37.9%	36.9%	8.5%	2.8%	8.3%	
<b>Maintenance and Appearance</b>							
Number	38	186	107	30	9	26	396
Percentage	9.6%	47.0%	27.0%	7.6%	2.3%	6.6%	
<b>Handicap Accessibility</b>							
Number	18	100	154	26	7	95	400
Percentage	4.5%	25%	38.5%	7%	1.8%	23.8%	

**Question 21 asked respondents if a family member or themselves benefit from accessible facilities, and if so to please indicate which of the following areas need improvements in Plainfield Township parks.**

The top responses were paved trails (9%), and accessible restrooms (8.7%). The remaining responses are listed below.

- Paved Trails: 9%
- Accessible Restrooms: 8.7%
- Accessible Lake Access: 6.8%
- Flatter, easier grade: 5.5%
- Accessible Parking: 4.85
- Accessible Playground: 1.9%
- Sensory Garden: 1.95
- Not applicable: 61.4%

**Question 22 asked respondents what one thing is they would do to improve parks and recreation in the Township.**

The top responses are listed below.

- Sidewalks/bike lanes
- Garbage cans
- Pickleball Courts
- Restrooms
- Maintenance
- Pavilions / Picnic Areas
- Better Signage

## GENERAL QUESTIONS

**Question 4 asked respondents why they live in the Township.**

The top five responses are listed below.

- Likes the lakes and recreational opportunities: 65.9%
- Likes rural living: 47.5%
- Like the community: 43.1%
- Retired here: 37.8%
- Close to family and friends: 26.9%
- Other write-ins
  - Family Cabin/ Cottage
  - Hunting and trapping
  - Long lake
  - Proximity to cross-state hiking and riding trail. Access to USFS two tracts to train/condition sled dogs

**Question 5 asked respondents how they would characterize the quality of life in Plainfield Township.**

Respondents said:

- **Very good:** 33%
- **Good:** 53%
- **Average:** 13%
- **Poor:** 1%

The survey asked respondents if they selected poor or explain why. Respondents said:

- Nowhere to get good healthy vegetables, keto food options, no good fitness center with updated equipment, no outdoor pickleball, no healthy restaurants
- Not enough things to do. Restaurants, activities, pickleball, bowling, etc.
- Not enough entertainment. Need good quality restaurants, better fitness center (equipment), outdoor pickleball courts, more indoor pickleball courts, nice grocery/department store
- Need healthy restaurants, better workout equipment/facility, pickleball courts inside and outside, bike lanes around lakes, my recreational options, ORV trails into town

**Question 7 asked respondents in the following categories how do you feel Plainfield Township has changed in the past five years.**

- Natural Environment (e.g. lakes, rivers, forest, agricultural land, open space)
  - **Much better:** 4.5%
  - **Better:** 35.1%
  - **Same:** 52.2%
  - **Worse:** 7.9%
  - **Much worse:** 0.2%
- Township Services
  - **Much better:** 4.8%
  - **Better:** 28.8%
  - **Same:** 57.8%
  - **Worse:** 7.6%
  - **Much worse:** 1.0%

**Question 23 asked respondents what they like best about the Township.**

The top responses are listed below.

- Rural Living
- Woods / Lakes
- The People
- Schools
- Good Security
- Quiet

**Question 24 asked respondents if there is one thing, they would do to improve the Township over the next five to ten years.**

The top responses are listed below.

- Businesses/Restaurants
- Roads – improve
- Blight
- More trails, sidewalks, and bike lanes
- Pool- need
- Pickleball

# GOALS & OBJECTIVES

## TABLE OF CONTENTS

**47** INTRODUCTION

**47** GOALS AND OBJECTIVES

**49** ACTION PLAN

DRAFT

## GOALS AND OBJECTIVES

### INTRODUCTION

Developing effective and achievable goals and objectives is an important part of the parks and recreation planning process. Overall, the Township would like to provide high-quality recreation opportunities for the community. More specific goals and objectives are based on the demographic characteristics of the population, the physical and environmental characteristics in Plainfield Township, and the input from the community.

Goals are the broadest level of ideas. By necessity, they are overarching and general. Objectives carry out the purpose of each goal. Finally, the Action Plan items are the most specific level. They identify specific projects and programs to be pursued over the next five years. Action Plan items can include organizational, staffing, programming, public information, and operation and maintenance actions. The Plainfield Township Parks and Recreation Committee formulated the following goals and objectives.

### GOALS AND OBJECTIVES

#### GOAL 1: CONTINUE TO PROVIDE AND IMPROVE RECREATIONAL AND SUPPORT FACILITIES THAT INSPIRE COMMUNITY PRIDE

##### *Objectives:*

- a) Make these public facilities visible to the public so they don't appear to be held in private interests.
- b) Continue to provide a high level of cleanliness and upkeep/maintenance of the existing facilities.
- c) Improve or rehabilitate existing facilities that need improvements or become outdated.

#### GOAL 2: CONTINUE TO PRESERVE, PROTECT, AND ENHANCE THE VARIETY OF WATER AND NATURAL FOREST RESOURCES IN PLAINFIELD TOWNSHIP AND THE RECREATIONAL OPPORTUNITIES THAT THEY PROVIDE.

##### *Objectives:*

- a) Continue to improve the facilities at the existing waterfront parks to provide beach access, fishing opportunities, boating, parking, and other related amenities.
- b) If there are unique opportunities for new parks, acquire additional property to provide more public access.
- c) Develop strategies for controlling invasive species in the parks.
- d) Work with state and federal agencies to maintain and improve water and shoreline quality.
- e) Work with local groups and jurisdictions in an effort to avoid duplication of recreational needs.



GOAL 3: PROMOTE AND PROVIDE DIVERSE RECREATIONAL OPPORTUNITIES THAT ARE FUNCTIONAL FOR A VARIETY OF USES AND ARE ABLE TO SATISFY ALL AGE GROUPS AND LEVELS OF ABILITY.

*Objectives:*

- a) Continue to provide recreational opportunities for people with all abilities and remove existing barriers to recreation facilities.
- b) Add new amenities to Plainfield Township Park facilities based on community input and need.
- c) Examine opportunities for increased recreational programming in Plainfield Township. Work with local municipalities, organizations, schools, private property owners, and service clubs where possible.
- d) Enhance kayaking and all-season watersports opportunities throughout the Township.

GOAL 4: CREATE COMMUNITY AWARENESS OF PLAINFIELD TOWNSHIP RECREATIONAL OPPORTUNITIES AND PROMOTE THEM TO CITIZENS AND VISITORS.

*Objectives:*

- a) Work on a website and develop other online opportunities to communicate with the public about Plainfield Township Park facilities and events.
- b) Consider other opportunities for advertising and promotion.

GOAL 5: FOCUS ON DEVELOPING PATHWAY AND TRAIL OPPORTUNITIES.

*Objectives:*

- a) Work with Iosco County to examine methods for improving and expanding off-road vehicle (ORV) and snowmobile trails within Plainfield Township.
- b) Create a link for Iron Belle Pathway based on the preferred route.
- c) Investigate and identify future links to Township non-motorized routes.
- d) Work with the Road Commission to add expanded shoulders on all county roads.

GOAL 6: CREATE MECHANISMS TO MAINTAIN POSITIVE PUBLIC RELATIONS.

*Objectives:*

- a) Provide regular opportunities for public input.
- b) Continue working with and developing partnerships with organizations involved in recreational opportunities.

## ACTION PLAN

This chapter of the Plan is the culmination of a comprehensive planning effort that began with a thorough analysis of the needs and desires of the community. With goals and objectives in place, Plainfield Township was able to develop a 5-year action program to work toward accomplishing the goals and objectives.

Potential projects were assigned a priority of 1 through 5, 1 being the most important and 5 being the least important. Each action item is related to one or more of the numbered goals from the previous section. Potential capital improvements described in the Plan have been established not only to provide a framework for decision-makers but also to apply for grant funding for these proposed projects.

The project list is not a fixed element, and it is neither all-inclusive nor exclusive. Future circumstances, especially the availability of funding, may change priorities or require the reprioritization of items.

TABLE 7 – ACTION PLAN

Action Item	Relates To Goals	Priority
<b>Township Hall Park</b>		
Develop pickleball courts	1,3	2
Add pavilion	1	2
Explore the feasibility of indoor and outdoor pickleball tournaments	1,3	1
Connect the park to the Township Hall building with a walking path	1,3	2
Explore the possibility of food trucks at tournaments, requirements, and hookups.	1,3,5	2
<b>Long Lake Park</b>		
Construct an accessible fishing pier between the boat launch and the swimming beach.	1,2,3	1
<b>Loon Lake Park</b>		
Improve beach access	1,2,3	3
Explore the feasibility of adding more sand to the beach		
<b>Chain Lake Park</b>		
Improve the boat launch	1,2,3	3
Improve the beach area	1,2,3	3
<b>Jose Lake Park</b>		
Improve the beach area	1,2,3	3
<b>General Items</b>		
Add accessible playgrounds at parks	1,3	2
Develop a non-motorized path in each park for connection throughout the community	1,3,5	3
Connect to regional paths when opportunities arise	1,3,5	3
Develop snowmobile trails to connect with Forest Service's	1,3,5	1
Enhance water recreational opportunities throughout the Township.	1,2,3	2

# PLANNING PROCESS

## TABLE OF CONTENTS

**51** PROCESS

**51** REVIEW AND ADOPTION

DRAFT

## PLANNING PROCESS

### PROCESS

In a continuing effort to provide quality recreational opportunities for its citizens, Plainfield Township has developed this Parks and Recreation Master Plan as a tool to guide the development of community parks and recreational facilities over the next five years. This Plan is an update of the Townships' most recent plan which was adopted in 2016. The Plan will provide the Township eligibility for grants from the Michigan Department of Natural Resources to assist the community in reaching its recreational goals.

Plainfield Township contracted with Spicer Group of Saginaw, Michigan to assist with the completion of the Parks and Recreation Master Plan. The consultant met with the Township staff and the Parks and Recreation Board several times during the development of the Plan.

During the development of the plan, two opportunities for input, participation, and review were provided:

- Online community input survey that was available from August 2022 to May 2022
- 30-day review period and a public hearing held on **December 14, 2022**.

Based upon the existing information and public input, the Township developed the goals and objectives for parks and recreation for the next five years. Then, the Township updated its action plan to accomplish the goals and objectives of the plan.

### REVIEW AND ADOPTION

Spicer Group completed a draft Parks and Recreation Master Plan which was available for review at the Township offices and on the Townships website. The review period from **November through December** was publicized on the Townships **website and in the local paper**. The final opportunities for community input occurred at the advertised public hearing held prior to the adoption of the Plan at the Parks and Recreation Board meeting on **December 14, 2022**. After the public hearing, the Parks and Recreation Board passed a motion recommending the Township Board adopt the Parks and Recreation Master Plan. On **December 21, 2022**, the Board held a public hearing, following the public hearing the Plainfield Township Board passed a resolution to adopt the Plan on **December 21, 2022**.

Copies of the Plan were transmitted to the East Michigan Council of Governments and Iosco County. The Plan was uploaded to the Michigan Department of Natural Resources for approval in January 2023. Copies of the noticed advertisement, the public hearing minutes, and the resolution are included in Appendix C.

# APPENDIX

## TABLE OF CONTENTS

**A** FUNDING SOURCES

**B** SURVEY RESULTS

**C** ADOPTION DOCUMENTS

DRAFT

**APPENDIX A**  
FUNDING SOURCES

## SOURCES OF RECREATION GRANT FUNDING IN MICHIGAN

### Michigan Natural Resources Trust Fund (MNRTF)

- Administered by the DNR Grants Management
- Match requirement- minimum of 25%
- Development Grants
  - Minimum Grant Request \$15,000
  - Maximum Grant Request \$500,000
- Acquisition Grants
  - No minimum or maximum
- Goals of MNRTF Board
  - Resource Protection- very important
  - Water Access
  - Community Recreation
  - Urban Recreation
  - Economic Development
- Due annually on April 1st (secondary applications for acquisition only in August)
- [www.michigan.gov/dnr-grants](http://www.michigan.gov/dnr-grants)

### Land and Water Conservation Fund (LWCF)

- Administered by DNR Grants Management
- 50% match required
- Minimum grant request \$30,000 (60,000 project total)
- Maximum grant request \$100,000 (\$200,000 project total)
- Funds a wide variety of outdoor recreation projects
- Application due annually on April 1<sup>st</sup>
- [www.michigan.gov/dnr-grants](http://www.michigan.gov/dnr-grants)

### Michigan Natural Resources Recreation Passport

- Administered by DNR Grants Management
- Match requirement- minimum of 25%
- Development Grants
  - Minimum Grant Request \$7,500 (\$10,000 minimum total project cost)
  - Maximum Grant Request \$30,000 (\$40,000 maximum total project cost)
- Funds a wide variety of outdoor recreation projects
- Due annually on April 1<sup>st</sup>
- [www.michigan.gov/dnr-grants](http://www.michigan.gov/dnr-grants)

### Aquatic Habitat Grant Program

- Administered by DNR Grants Management- Game and Fish Protection Fund
- Match requirement- minimum of 10%
- Application packet due September 30, 2015
- Improve fish and other aquatic organism populations by protecting intact and rehabilitating degraded aquatic habitat.
- [www.michigan.gov/dnr-grants](http://www.michigan.gov/dnr-grants)

### Michigan Invasive Species Grants Program (MISGP)

- Administered by DNR, Environmental Quality Department, and Agricultural and Rural Development Department.
- Partnered to address strategic issues of prevention, detections, eradications, and control for both, terrestrial and aquatic invasive species.
- Application packet due October 30, 2015
- Match Requirement- a minimum of 10%
- Minimum Grant Request- \$25,000
- Maximum Grant Request- \$400,000
- [www.michigan.gov/dnr-grants](http://www.michigan.gov/dnr-grants)

### Michigan Department of Transportation- Transportation Enhancement Funds

- For non-motorized transportation (paths) and rehabilitation and operation of historic transportation buildings, structures, or facilities (bridges, railroad depot, etc.)
- 20% minimum match required, 40% recommended
- Eligible applicants include county road commissions, cities and villages, other organizations may sponsor applications (i.e. County Road Commission or local MDOT office sponsors a township application)
- Rolling on-line application process
- [www.michigan.gov/mdot](http://www.michigan.gov/mdot), go to “Projects and Programs”

### Great Lakes Fisheries Trust (GLFT)

- Objective- improve or create shore-based Great Lakes recreational access.
- Must be located on the Great Lakes or lower portions of the major tributaries
- Matching funds not required, but projects with local funding will be favored
- Relatively simple application form and requirements
- Due in early September
- [www.glft.org](http://www.glft.org)

### Michigan Coastal Zone Management (CZM)

- Objectives
  - Protect, manage, and restore coastal communities and habitats
  - Restore historic structures
  - Revitalize urban waterfronts
  - Increase recreational opportunities along Michigan’s Great Lakes Coast
- Applicant must be a coastal unit of government
- Maximum grant request- \$50,000
- Match requirement- 50% (some flexibility in match for non-construction projects that result in changes to local master plans or zoning ordinances, regional greenways, or include conservation planning)
- Eligible Projects
  - Studies, designs, and land use plans- must have a direct connection to coastal planning and/or resource protection.
  - Construction- boardwalks, trails, lighthouse preservation, habitat restoration, scenic overlook, etc.)
- Due annually on April 1<sup>st</sup>



- [www.michigan.gov/deqcoastal](http://www.michigan.gov/deqcoastal)

## OTHER GRANT PROGRAMS TO CONSIDER:

### Coastal Program- Great Lakes- US Fish and Wildlife Service

- Grants to conserve fish and wildlife and the habitats and to support healthy coastal ecosystems
- Rolling Application Process
- [www.fws.gov/midwest/greatlakes/apply.htm](http://www.fws.gov/midwest/greatlakes/apply.htm)

### Specific sports and sport foundations

- United States Tennis Association (USTA)
  - Funding for tennis courts and programs
  - [www.usta.com](http://www.usta.com)
- Major League Baseball
  - Baseball tomorrow fund
  - [www.baseballtomorrow.com](http://www.baseballtomorrow.com)
- United States Soccer
  - [www.ussoccerfoundation.org](http://www.ussoccerfoundation.org)

### Safe Routes to Schools

- For projects near elementary and middle schools”
  - Sidewalks
  - Traffic calming and speed reduction
  - Pedestrian and bicycle crossing improvements
  - On-Street pedestrian facilities
  - Traffic diversion improvements on the vicinity of schools
- Need to complete the safe routes planning process to apply
- [www.saferoutesmichigan.org](http://www.saferoutesmichigan.org)

### Trust For Public Land

- Conservation Transactions
- TPL helps structure, negotiate, and complete land transactions that create parks, playgrounds, and protected natural areas. TPL serves as an independent agent, buying land from willing landowners and the transferring it to public agencies, land trusts, or other groups for protection. In some instances, TPL will protect land through conservation easements, which restrict development but permit traditional uses such as farming and ranching.
- [www.tpl.org](http://www.tpl.org)

### Michigan Department of Environmental Quality (MDEQ) Nonpoint Source Pollution Control Grants

- Must be part of a watershed management plan
- Projects aimed at reducing nonpoint source pollution (stream bank and shoreline stabilization, rain gardens, erosion control, conservation easements)
- [www.michigan.gov/deg](http://www.michigan.gov/deg) go to “Surface Water” and then to “Non-point source pollution”

## Community Foundations and/or Private Foundations and Endowments

### Keep in mind-

- Match requirements can usually be in-kind services, donation, or cash
- Most grants are provided on a reimbursable basis
- Barrier free accessibility is usually required for improvement projects
- Multiple partners, multiple jurisdictions can be viewed favorably- think regional projects
- Grant applications can be complicated, detailed, and competitive. Make sure your grant writer is familiar with the grant and funding source. Learn as much as possible ahead of time to know if your project has potential for funding.

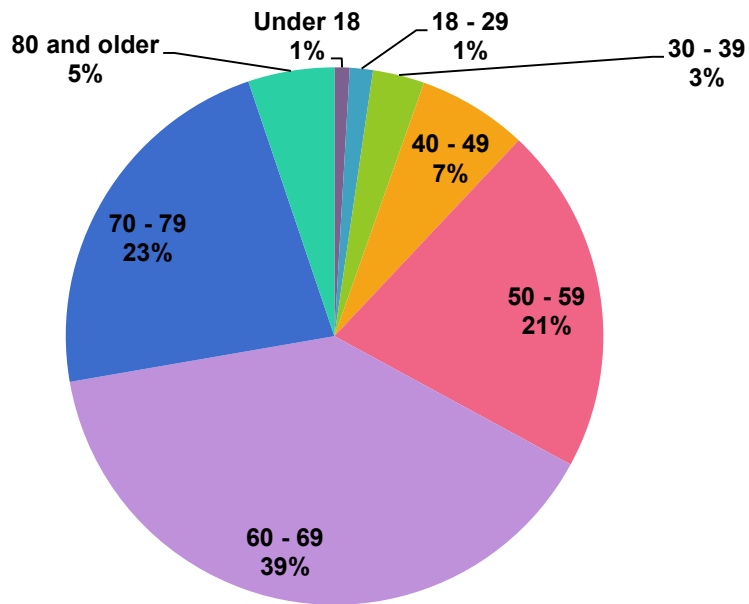
**APPENDIX B**  
SURVEY RESULTS

**DRAFT**

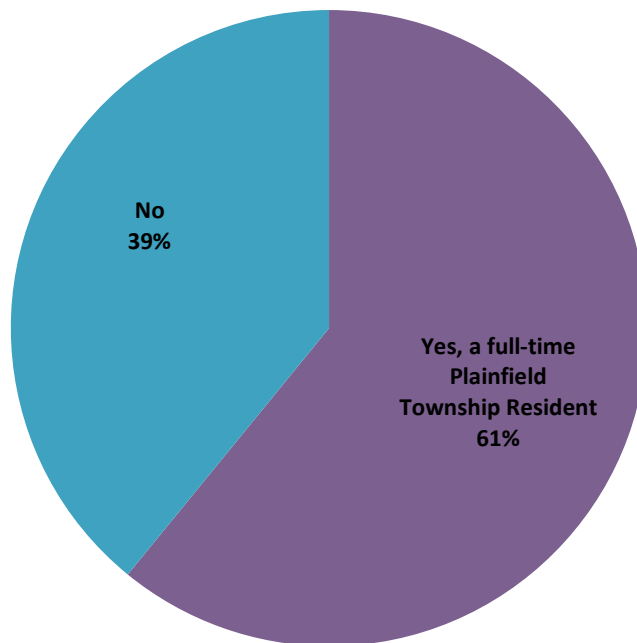
# REPORT FOR 2022 PLAINFIELD TOWNSHIP SURVEY

Respondents 425

## 1. What is your age range?

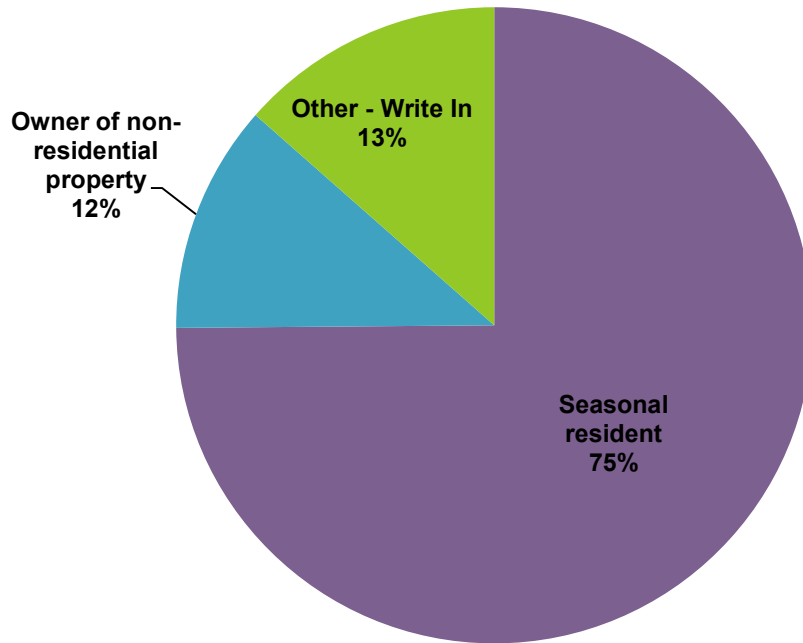


## 2. Are you a permanent resident of Plainfield Township?



DRAFT

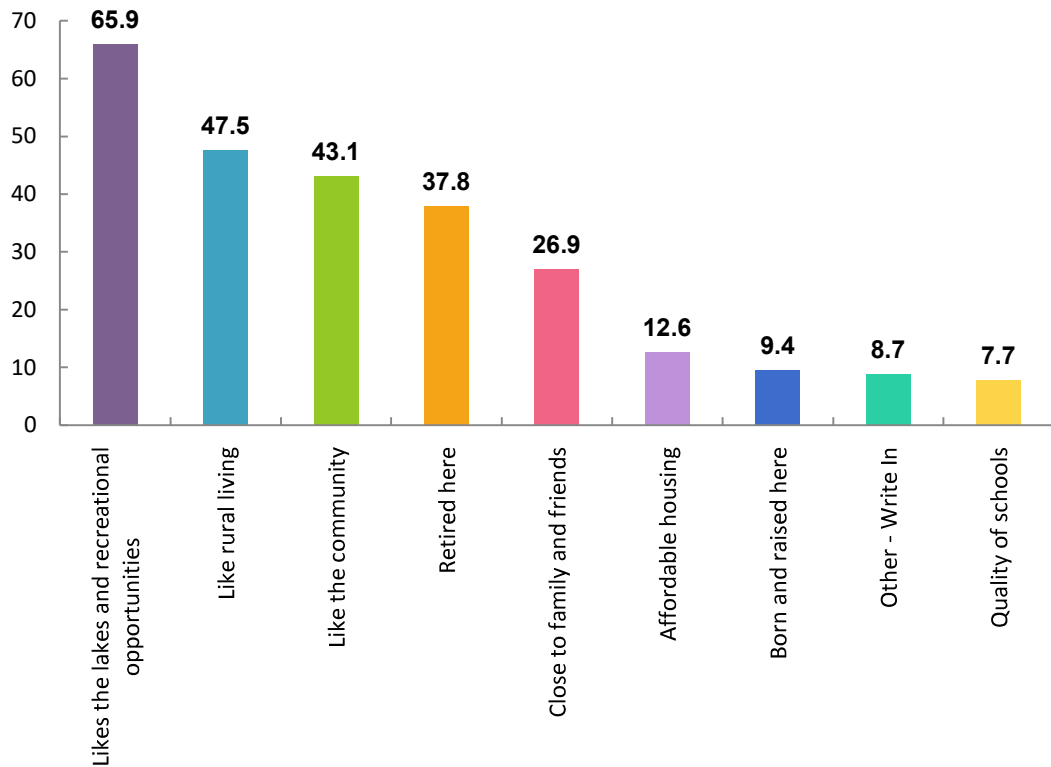
**3.If you are not a permanent resident, can you please tell us your role in the Township? Respondents 162**



Other Write In

- Live near the Township (4)
- Part time resident (4)
- Lupton Resident
- Hill twp. resident
- Long Lake property owner
- Part owner of Hale Villa Apartments
- Permanent resident of adjacent township
- Property owner
- Resident from prior years
- Resident of Wilber township
- Visitor
- We live in Curtis Township and do most of our shopping in Hale
- We own property on the lake for camping and off the lake for hunting
- both

**4. Why do you live in Plainfield Township? Check all that apply.**

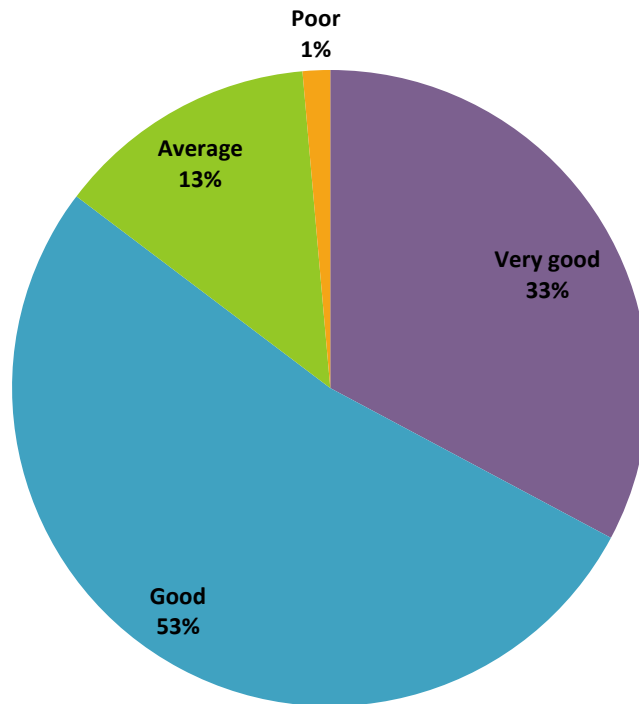


Other Write In

- Family Cabin/ Cottage (8)
- Work here (5)
- Been here for years (4)
- Inclusive Catholic Church
- Adopted here
- All of the options as far as a retired
- Caring for elder parents
- Hunting and trapping
- Husband is a Hale Alumni
- I am living my dream!
- Just moved here Feb 2022
- Long lake
- My family lives there
- People that live here
- Proximity to cross state hiking and riding trail. Access to USFS two tracts to train/condition sled dogs
- Quiet. Not highly commercial.
- The Supervisor etc. tries to get us the best and keep our community current. best and keep us current.

DRAFT

**5.How would you characterize your quality of life in Plainfield Township?**



**6.If you selected "poor" or "very poor" on the previous question please explain why.**

- Nowhere to get good healthy vegetables, keto food options, no good fitness center with updated equipment, no outdoor pickleball, no healthy restaurants
- Townships not managed well.
- Not enough things to do. Restaurants, activities, pickleball, bowling etc
- No growth
- Not enough entertainment. Need good quality restaurants, better fitness center (equipment), outdoor pickleball courts, more indoor pickleball courts, nice grocery/department store
- Need healthy restaurants, better workout equipment/facility, pickleball courts inside and outside, bike lanes around lakes, my recreational options, orv trails into town

**DRAFT**

**7. In the following categories, how do you feel Plainfield Township has changed in the past 5 years?**

	Much Better	Better	Same	Worse	Much Worse	Responses
<b>Road Conditions</b> Count Row%	37 9.1%	161 39.8%	164 40.5%	39 9.6%	4 1.1%	405
<b>Traffic</b> Count Row%	12 3.0%	47 11.8%	241 60.4%	95 23.8%	4 1.1%	399
<b>Natural Environment (e.g. lakes, rivers, forests, agricultural land, open space)</b> Count Row%	18 4.5%	142 35.1%	211 52.2%	32 7.9%	1 0.2%	404
<b>Blight</b> Count Row%	4 1.1%	93 23.3%	209 52.3%	74 18.5%	20 5.0%	400
<b>Township Services</b> Count Row%	19 4.8%	114 28.8%	229 57.8%	30 7.6%	4 1.0%	396
<b>Overall Quality of Life</b> Count Row%	19 4.8%	152 38.2%	216 54.3%	11 2.8%	0 0%	398

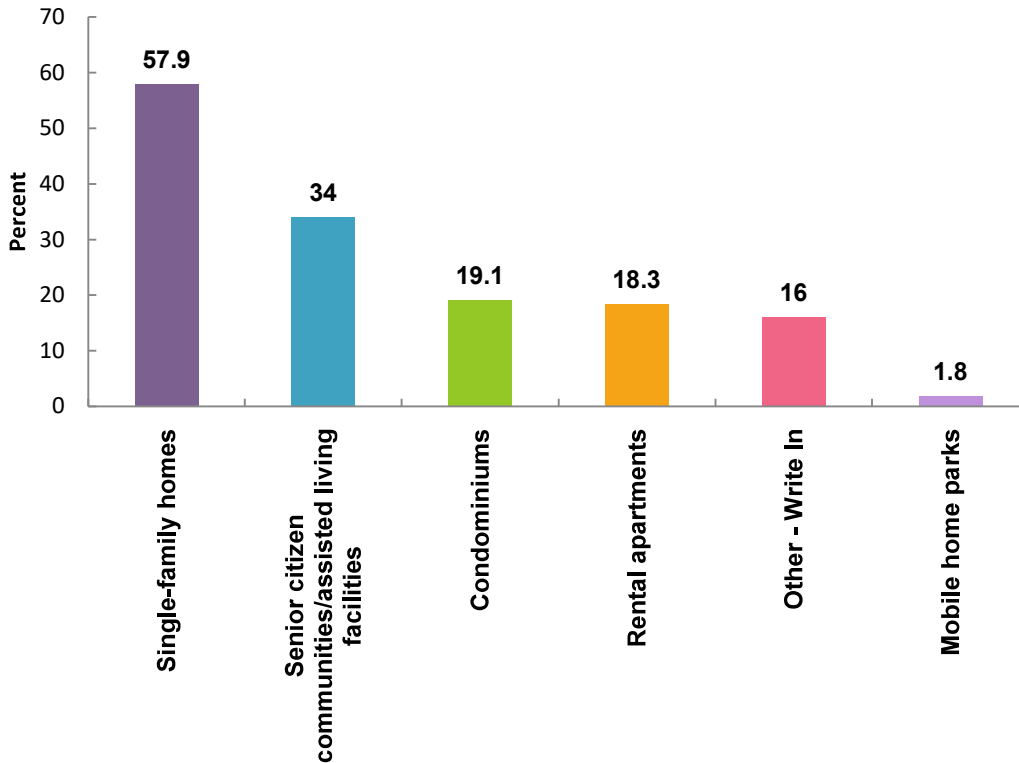
**8. If you selected "worse" or "much worse" on the previous question please explain why.**

- Keep taking more and doing less except give more restrictions

**DRAFT**



**9. Which of the following housing choices would you like to see more of in the Township? Please check all that apply.**



Other Write In

- None / make no changes (12 responses)
- Hotel / Lodges / (3)
- Low income (3)
- Rental properties (2)
- Upscale single-family homes
- pavilion in town for family and events
- Vacation rentals
- Affordable housing and livable conditions for all, including seniors
- Affordable housing ie apartments
- Back to 720 square foot min.
- Been looking for a small place for father in law to live close by.
- Being a seasonal resident, whatever housing is appropriate for permanent residents would be best.
- Close to borders
- Dedicated bike lane on roads
- Houses the city people haven't bought. They literally use the houses up here for maybe 4 weeks in a year and we have to move away from here because all of the houses are taken by people who don't use them.
- Lake living
- More green space
- New resident, don't know yet
- Rural estate
- Senior communities

**DRAFT**

**10. What are your feelings regarding the agricultural land use statements below?**

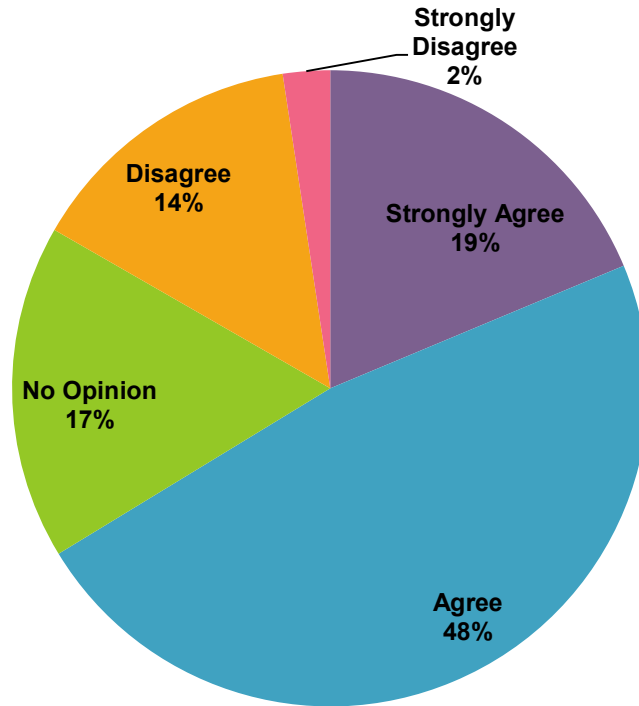
	Strongly Agree	Agree	Neutral	Disagree	Strongly Disagree	No Opinion	Responses
<b>Agriculture is an important aspect of the Plainfield Township economy</b> Count Row%	139 33.5%	201 48.4%	50 12.0%	8 1.9%	2 0.5%	15 3.6%	415
<b>Agriculture is an important aspect of the Plainfield Township landscape</b> Count Row%	129 31.2%	209 50.6%	56 13.6%	6 1.5%	2 0.5%	11 2.7%	413
<b>Agriculture land should be preserved</b> Count Row%	151 37.3%	183 45.1%	62 15.3%	1 0.2%	1 0.2%	8 2.0%	406
<b>Using agriculture land for new development is appropriate for accommodating growth and development</b> Count Row%	20 4.9%	84 20.7%	132 32.6%	120 29.6%	43 10.9%	6 1.6%	405

Write in Responses

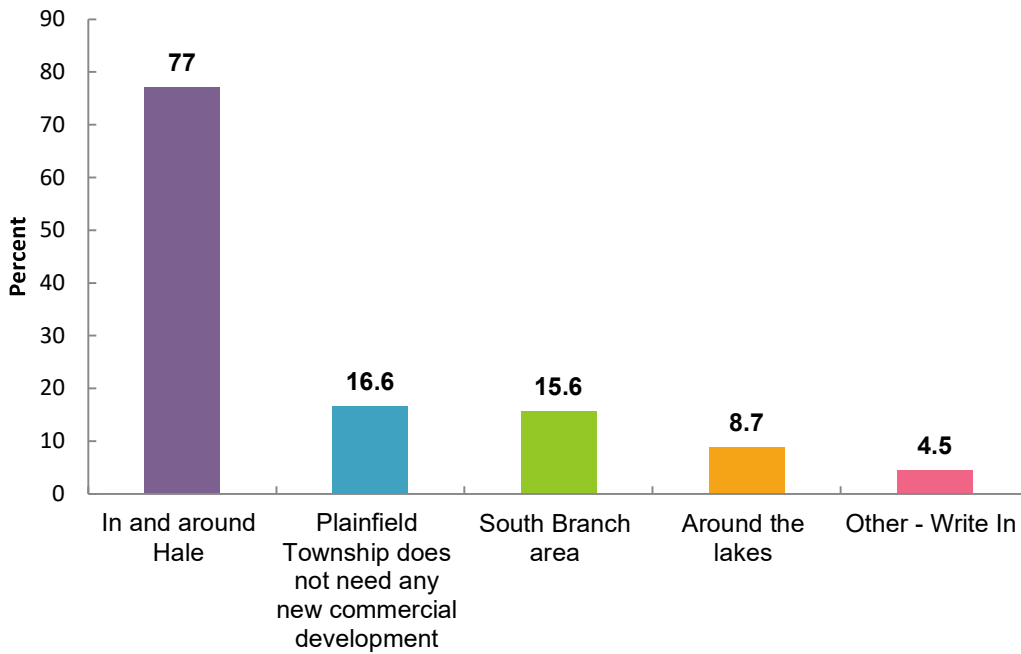
- Have a community garden
- To save agricultural land all over U.S.! Build up, not out. Renew city homes!
- We should save as much agricultural land as possible
- We do not need new development.
- Want it all to be preserved:
- Use for recreational activities
- Preserve what there
- Pickleball playground area:
- Love the preserved Lumberman's area!
- Keep more areas open for all to use.:
- Keep agriculture treat them better

**DRAFT**

11. Plainfield Township should promote more commercial development in the coming years.



12. Future commercial development should be located in the following areas. Please check all that apply.

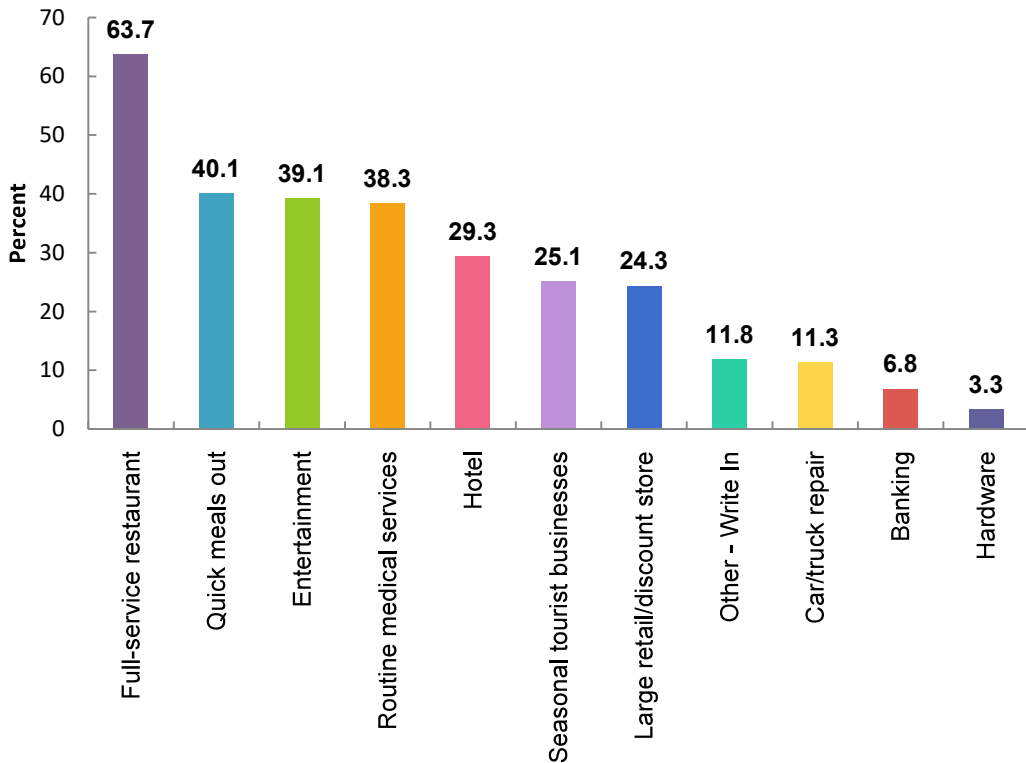


DRAFT

**Other Write In**

- Better restaurants
- Develop an Industrial Park for industry
- Figure out what to do with all the vacant properties now things are looking very ghetto!
- In areas that it can be built, operated properly and maintained long term so many things get built the fail and are left looking like blight
- In the city of Hale, NOT agricultural surrounding area
- NOT around the lakes! Keep them natural/wooded as much as possible!
- Plainfield ave
- Repurpose unused buildings
- Stay away from the lakes with any commercial building!! Is that seriously an option??
- Would like to see more for kids. Splash park or pool access in winter.
- location should be determined depending on type of business ie retail, manufacturing
- out of Plainfield township
- we could use a small marina for docking boats at the larger lakes

**13.Plainfield Township needs more of the following commercial services. Please check all that apply.**



Other Write In

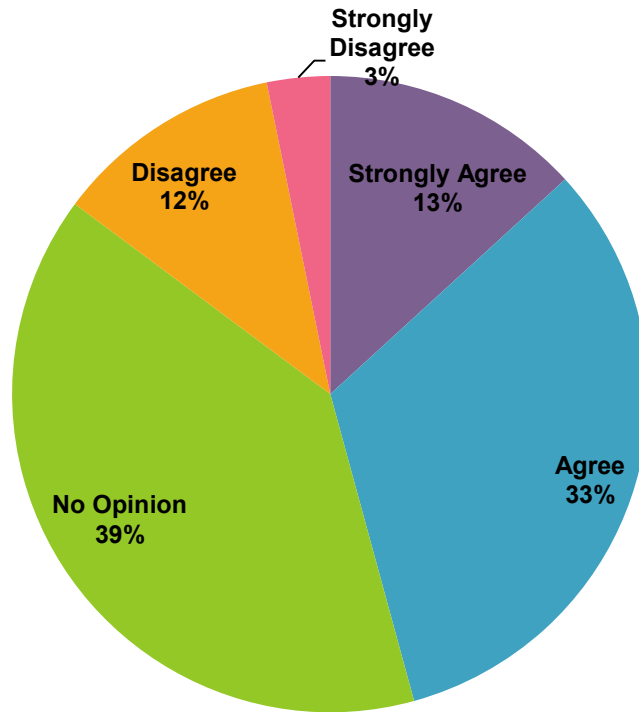
- None (5)
- Things for youth/teens (3)
- No more dollar generals (2)
- Grocery Store (2)

**DRAFT**

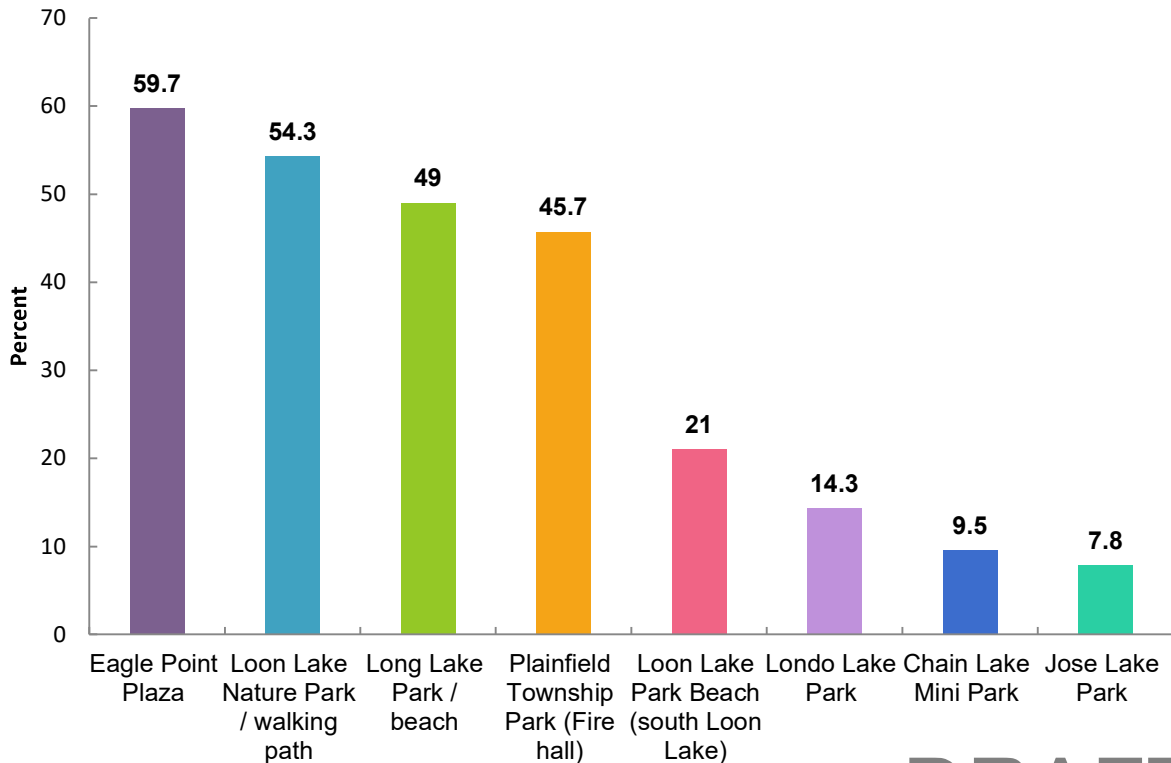
- If you're a single lady, there's not much to do up here
- More good quality workout equipment in the Eagle Ponte Plaza
- Any business the community population can support on a yearly basis so it will succeed
- Best answered by residents
- Bigger, more robust farmers market
- Business brings traffic needing road upgrades and higher taxes. We have everything we need.
- Dentist
- Dependable/Quality Landscaping, Home Maintenance, Cleanup Services and Businesses
- Dispensaries
- Farm/gardening/equipment & parts supply.
- Gas station at Long Lake
- Hale needs a grocery store that complies with health department regulations. South Branch could use some businesses
- I would like to see an urgent care facility for after hours care. With the lakes and tourists, kids and sports it is needed.
- Law Enforcement
- Medical Marijuana Provisioning Center
- Or small-medium size discount store. But NO more \$ stores.
- Pickle ball courts
- Putt Putt Golf, Bowling
- Retail stores
- Senior citizen classes at the community center, like computer classes
- Stronger and more consistent internet.
- Year around cabin rentals for fishing and hunting. HIGH SPEED INTERNET SERVICE, a decent bait and tackle store.
- car/boat wash
- nice, clean bar and pubs

DRAFT

**14. The Township needs a more diverse industrial base.**

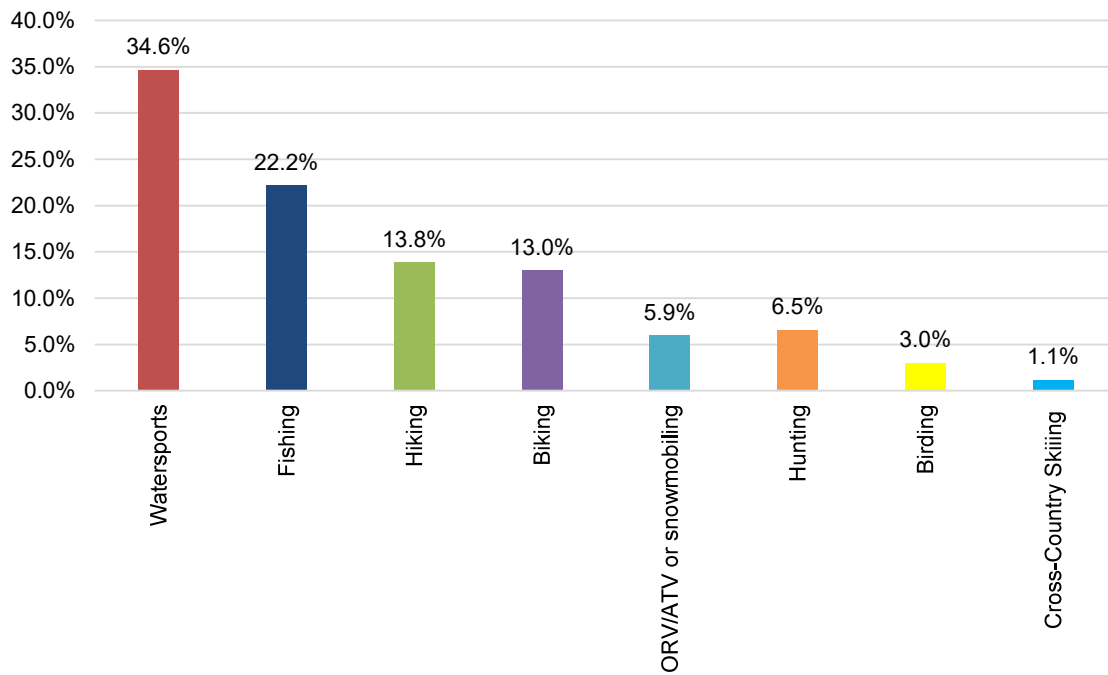


**15. Which of the following parks did you visit in the past year? Please check all that apply.**



**DRAFT**

**16. What activities did you participate in the last year while in Plainfield Township?**

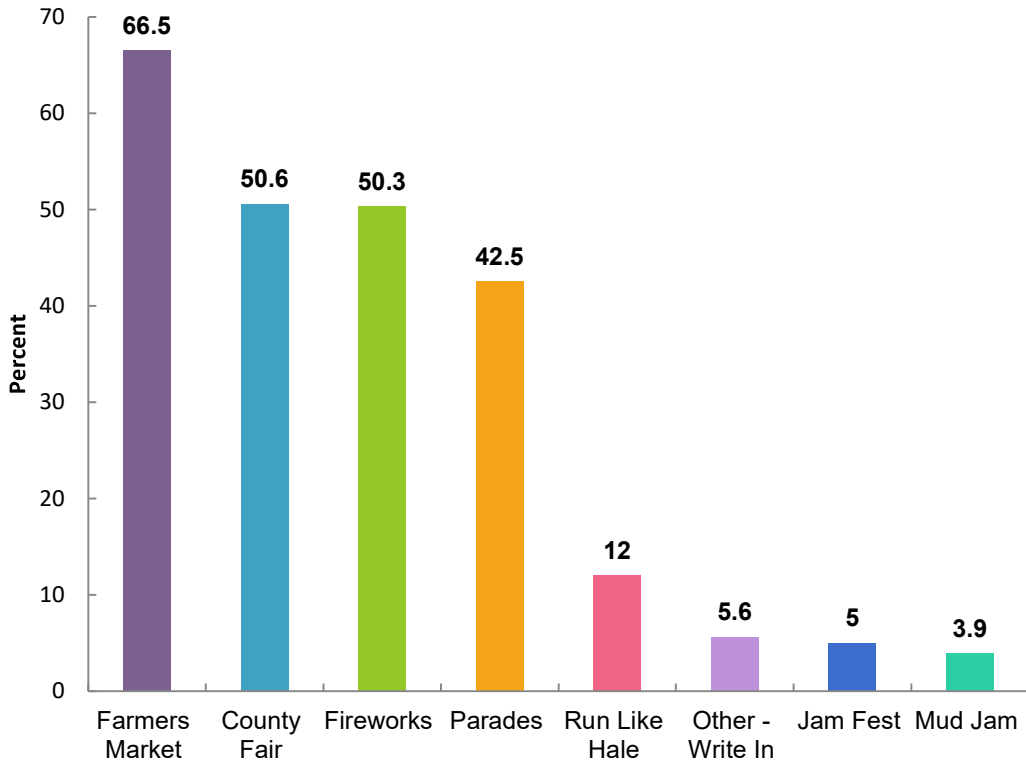


Other Write In

- Pickleball (2)
- Boating (2)
- Enjoy visiting the farmers market
- Equestrian trail riding (2)
- Fireworks
- Golf
- People watching
- Thrifting
- eating out, social drinking,

DRAFT

**17. What events did you participate in the last year while in Plainfield Township?  
Please check all that apply.**



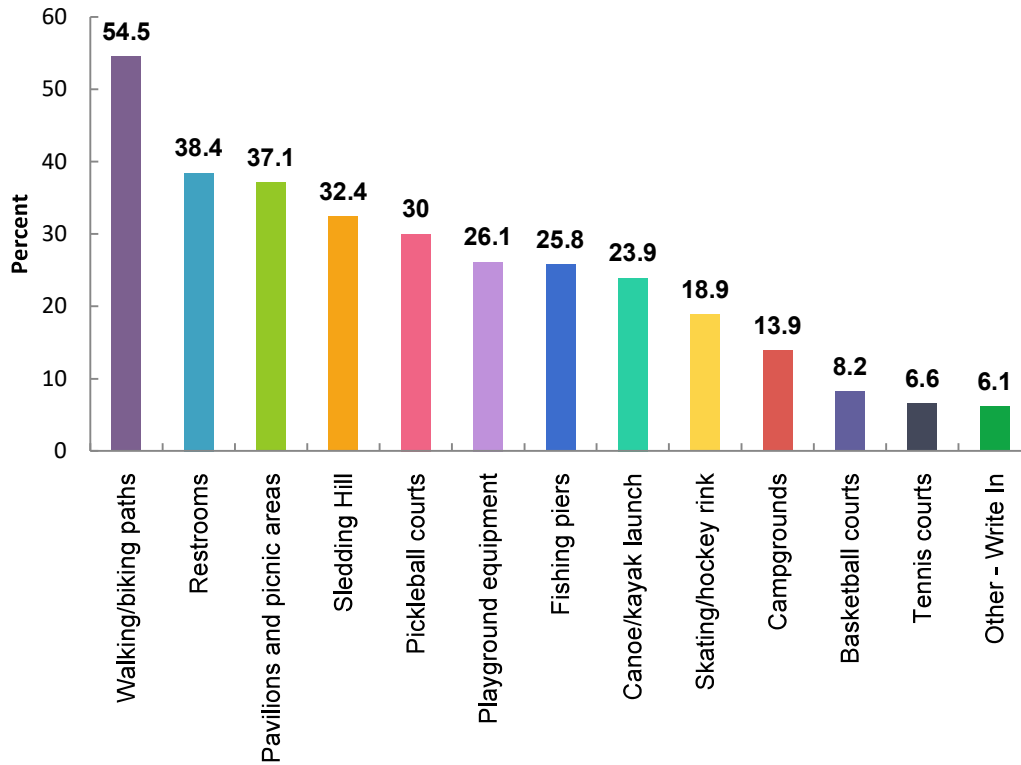
Other Write In

- Eagles Club live music
- Baseball game
- Boat parade
- Concert at the fairgrounds
- County Fair
- Golf
- Horse pull
- Just local. My husband and I are handicapped
- Nature trails/birding
- New resident late last year
- These are all good for the community
- car show
- stay away from town when something in town

**DRAFT**



**18. What additional facilities/amenities would you like to see added to the Township's parks? Please check all that apply.**



Other Write In

- Tennis Courts ( 2)
- Pool (2)
  - Swim lessons, open pool, exercise groups
- Dance venues
- New equipment at the Eagle Point Plaza
- Boat Cleaning Stations
- Dog park
- I am to old but we need all events for people.
- Maps showing where to find the above.
- Only things that will be maintained and not destroyed by vandalism
- Outdoor pickleball courts
- Skateboard park
- Snowmobile trail into town
- Walking path on long lake road
- washing stations at boat ramps

DRAFT

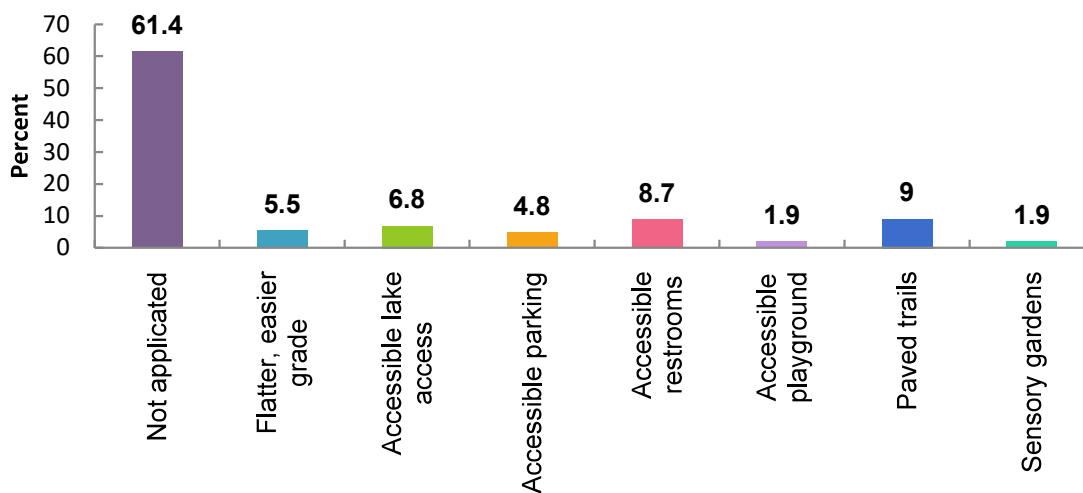
**19. Please evaluate the following aspects of the Township parks.**

	Very Good	Good	Neutral	Poor	Very Poor	Don't Know	Responses
<b>Safety and Security</b> Count Row %	69 17.1%	196 48.6%	88 21.8%	12 3.0%	6 1.5%	32 7.9%	403
<b>Variety of Facilities/Amenities</b> Count Row %	22 5.5%	151 37.9%	147 36.9%	34 8.5%	11 2.8%	33 8.3%	398
<b>Maintenance and Appearance</b> Count Row %	38 9.6%	186 47.0%	107 27.0%	30 7.6%	9 2.3%	26 6.6%	396
<b>Handicap Accessibility</b> Count Row %	18 4.5%	100 25%	154 38.5%	26 7%	7 1.8%	95 23.8%	400

**20. If you selected "poor" or "very poor" on the previous question please explain why.**

- No handicap access. Equipment only in town

**21. If you or a family member benefit from accessible facilities, please indicate which of the following areas need improvements in Plainfield Township parks. Please check all that apply.**



## 22. What is one thing you would do to improve the parks and recreation in Plainfield Township?

### Common Responses:

- **Sidewalks/bike lanes**
  - **Garbage cans**
  - **Pickleball Courts**
  - **Restrooms**
  - **Maintenance**
  - **Pavilions / Picnic Areas**
  - **Better Signage**
- 
- Ability to walk safely along roads, especially Long Lake Road.
  - More promotion of the park locations
  - ORV trail into town
  - Trash cans and pet waste bags.
  - Pavilion out front for the farmers market and also they could be utilized as rentals for baby showers, graduation parties or family reunions. I believe making the pavilions out front would also encourage more vendors and make it also profitable for the Township. Also being out front would make it more visible and secure.
  - Spray for bugs, bees
  - Security
  - Pool, skate park, hiking trails, playground updates, waterpark
  - Add more toddlers equipment.
  - Provide entertainment
  - Sidewalk and bike lanes both sides on Plainfield Ave and both sides on West River Dr.
  - Pickle ball courts
  - Maintain
  - Add lifeguards
  - Keep them open as long as possible.
  - Better beach area. Cleaning up the weeds.
  - Have bikers on bike trail buy permits. Huge investment with no return or very little roi. Every other user group has to pay
  - More frequent cleaning of restrooms & beaches during tourist season. Additional garbage cans at peak wkends espclly the 4th.
  - Build a hotel so people can come visit family in the hotel. Personally my brother just had to move to bay city because they was no houses to rent or buy around here. All of my sibling were born and raised here. I'm sick of having my family move away because the people who come up for 2 weekends out of the year have bought all of the houses. Which also look abandoned half of the time because the yard is not maintained until they come up here. And it's not just the houses is hurts our community, any store will tell you that during winter they can barley stay a float because there is no one here to come in. More people could stay if there were places to stay that haven't been taken by people who use them for 2 weekends.
  - Water fountains
  - 8-12 Outdoor Pickleball courts. If you build them, they will come. We travel to Tawas, Lewiston, Saginaw, Houghton Lake, Bay City to play outside. Hale could become a

pickleball magnet bringing many people from surrounding areas to our town. Lessons and tournaments could be hosted bringing a lot of additional business to this town.

- Public restroom, pickleball courts (indoor and outdoor), fitness center, bike lanes
- Build outdoor pickleball courts
- I love what you have done by the fire hall.
- Keep cleaner
- Keep the access open for all residents to use and enjoy.
- Increase equipment, tails, actives for families. Not Mud jam
- An outdoor pickleball facility!
- Outdoor pickleball courts.
- It's all great!!!
- Fish stocking of lakes
- Outdoor pickleball courts with shade, tables and restrooms
- Spend money on what is already there instead of adding new areas.
- Restrooms or pavilion
- It won't let me check more than one. As I age I would like to see flat and paved trails. I'd love to see a splash pad for our kids.
- Privilion and picnic areas!
- Pickle ball courts
- the boar launch at long lake needs some work to make it larger to back in and the dock is too short
- Clean restrooms, not just once a week or less
- Add pickleball courts with lighting and a few benches
- Pickleball courts
- Better signs with directions to parks. Didn't even know some of them existed!
- Add outdoor & indoor pickleball courts, put more bike lanes on roads- especially around the lakes, put up signage for cars to yield to bikers & advertise the 3ft law when passing bikers. The bike issue is a real problem.
- Outdoor pickleball courts.
- Pavilions,
- Discontinue the mud jam
- More opportunities for children.
- Don't really know because I don't use them much
- More frequent maintenance at the long lake beach.
- The losco exploration trail will be a true asset to the community
- Keep the grass cut and somehow police the Long lake back park. There is always someone tearing it up with their vehicle
- Restrooms
- Does not seem like there is a plan for future just random equipment. Work with school to create plan of equipment and rec events
- Pool
- Outdoor pickleball
- Have someone clean daily and mow the lawn more frequently
- Empty trash more often maybe use cameras to fine the one's abusing them
- Indoor and outdoor Pickleball facilities. The indoor facility at twp hall is very busy. More courts are needed
- Mosquito , black fly control. Appearances. Accessible walking paths

- Sand at Loon lake
- Garbage picked up in a timely manner and restrooms cleaned more often.
- Add outdoor pickleball courts
- Reduce speed limit between Hale and Rollway road to make it safer to access parks and recreation.
- Outdoor pickleball courts More hours for pickleball in the evening indoors
- Cleaner parks
- Pavilions, water park,
- More things for kids to play on or off
- More transparency
- Maybe better signs for tourists to get information on activities in area. Where to park, cost to go in, directions. The Mud Jam is NOT a favorite of many people ! Most residents don't feel they have a say in anything.
- More walking paths
- Need pavilion in town, just like augres, rose city and others ...
- More bike and hiking trails
- Fix the docks, add an addition boat launch
- Better signage for Loon Lake walk path. So many people who live here have no idea of the walk path.
- Consider putting in a water park for the kids.
- We need a splash for the kids during the summer. We also need picnic areas for families or groups to get together.
- Handicap launches for Kayak Large park for events
- make them travelers friendly,
- a place to dock a boat over night or for the season on larger lakes ie Long Lake or Sage
- Loon lake beach is awful!! I love bringing my kids there because it's less busy than most beaches around and I've been going there since I was a kid myself. But I wouldn't even consider it a beach anymore. It's just a bunch of tall grass. There's no sand at all. It looks terrible. I understand the hill there might be hard to get sand down to but somebody can at least come with a weed Wacker and clean it up a bit. And moving on to long lake beach. The beach itself is awesome! Clean and sandy. But the bathroom!! The best thing to do with that would be to burn it down and build a new one. I don't even think people in prisons have to use facilities that dirty. It's literally covered in feces. Disgusting
- Please Add Pickleball Courts .. helps provide health benefits for a community of all ages. Great social and community benefits.
- With the rapid growth in popularity of Pickleball for all ages, the addition of outdoor courts is a real need in this community.
- 8-12 outdoor pickleball courts, bike lanes around lakes, orv trail into town, shade and restrooms at pickleball courts
- Bike lanes around long lake and into town, pickleball courts with shade and restrooms, orv trail into town, better fitness equipment in gym, more indoor pickleball courts
- Splash pad with restrooms in town. Frisbee golf course, picnic areas, pavilions, places that would encourage and facilitate multi gen-gathering. Like the park in West Branch.
- Restaurants on lakes. Lake parades. Shooting areas. Coffee shops. Snowshoeing
- Pavilions with tables.
- Stop renting fairgrounds to Mud Jam.
- Try to keep cleaner.

- Keeping clean is can always be better.
- landscaping, nature.
- Continue to maintain and keep them appealing for all to use.
- DId not even know these litle parks existed.
- Stop trying to commercialize the parks by trying to make them attractive. spend our money on the roads. Promote cleaner safe environments on the trails and roads. The roads will be needing repaving shortly.
- Add a dance opportunity venue (to include ball room dance)
- more lake access
- Improve the parking area (gravel) at the township park located at the end of Harlan.
- don't overdevelop
- Advertising area events
- Install wash stations at all majoir boat launches. and install video camers and inforce the boat washing
- Cleaning stations to prevent invasive species from entering the lakes. More signage to better direct the flow of lake traffic. More police presence to enforce auto traffic on the roads and boat traffic on the lakes.
- More awareness
- Pickleball Courts
- Outdoor and indoor dedicated pickleball courts! Very needed in this area and with Hale being in the geographic location it is in if you build nice, large facility people will come from all over! Could be a pickleball magnet for northeastern Michigan. We drive to Kirkland College, Saginaw, Bay City, Prudenvilke to get good courts and level of play!
- Spray for mosquitos and other annoying insects
- Walking and biking paths
- More for kids and more walking paths
- Work with the school better for more recreational activities.
- Horseshoe / Cornhole / bocce courts would be an awesome upgrade
- Don't really use them
- This area desperately needs walking paths on long lake road. Traffic had increased there and it's dangerous as so many people drive fast and are often oblivious to pedestrians.
- More restaurants
- More walking paths, especially around the lakes.
- add some outdoor pickleball courts
- There good
- Need more bike paths. Feels dangerous to bike the roads
- Create more nature trails around/near lakes in the area if possible. Loon lake nature trail is so lovely, more trails like this. Bicycle trails would also be nice or list where they are on township website (links).
- More quick and easy food restaurants. More grocery store / retail options
- More DNR pressence and local law enforcement
- Bike paths
- Open state land trails closed by DNR, north of Kokosing Road.
- Cleaner, more attractive parks and recreation. The fairgrounds in Hale need improvement / upgrading. Get rid of junky or dilapidated areas (junk yards, old cars and boats, Deer acres, the Bear in the cage, etc. These are unsightly and devalue the area.
- Splash pad and better clean up

- Public Basketball, and tennis courts (lighted at night) would be a great addition. Provide some outdoor activities for the evening.
- bike paths
- Stay ahead of the weed problem!
- more hiking paths
- I can only speak to the Long Lake public beach in that it seems to be a target for mischief, trash dumping, and the outhouse is disgusting.
- Work on upkeep
- Security at long lake park
- More business to draw visitors and support locals thus bringing more income to the area
- Outdoor Pickleball courts.
- Walking trails. I like things the way they are. Not hoping to bring more people to the area. It's already swamped w people in the summer. Been coming here for last 48 years.
- With so many health enthusiasts, our Long Lake in Hale MI circumference is close to a perfect 10k. Everyday we have bikers, runners, walkers, families walking with dogs or strollers and bird enthusiasts using the circumference. It would be wise to have a bike/ walk path around the lake for safety! More foot traffic and safety measures would bring more people to our lake and increase the daily revenue to our local stores! Win, win for everyone!
- ban jet skis on Long Lake, at least in the narrower parts of the lake as thier wake causes shore damage
- Bike Lanes on roads
- Walking trails
- Maintenance
- Improve the boat launch n the west end of the lake.
- Be able to find them
- Add outdoor pickleball courts.
- Have one main park, it seems there are too many for the township to keep up. If you had one many park you would be able to have a play area, picnic area, bathrooms and walking trails. Should be located near town.
- I would add one of those water splash areas where the water spurts up from different holes - could be an ice rink in the winter. Also free concerts in park for summer.
- Walking trails
- Advertise parks & recreational facilities and their locations/map more online, as we don't get a newspaper or any other delivery while up here, past 16 years.
- Weekend community programs like exercise classes different types of classes and programs
- Keep grass cut, tables and grills clean
- Walking and Biking Trails
- trash pick up along roads
- You are doing great
- Please add more pickleball courts and times to play. It is becoming popular and it's getting crowded.
- Outdoor pickleball courts and a snowmobile trail into town for gas/food.
- remove invasive species
- The people and friendliness of township service staff.
- Put in outside pickleball courts.
- Better road maintenance.

- More monitoring of conditions of public parks and areas.
- Pavilion at Twp. park
- Promote them more, mobile concessions stand on designated weekends.
- More recreation
- Make sure all the parks get something
- provide playground equipment for kids, restrooms and drinking fountains
- neutral
- Outside pickleball courts
- pavilion for farm market
- pavilion and picnic area
- more events (competitions, tournaments, "open houses")
- outside pickleball courts
- access site signage
- keep toilet facilities cleaner and stocked with paper

### **23.What do you like best about Plainfield Township?**

#### **Common Responses:**

- **Rural Living**
- **Woods / Lakes**
- **The People**
- **Schools**
- **Good Security**
- **Quiet**
  
- Laid back living. Best small library I've ever used.
- The access to the natural beauty
- My lake community and my home
- Water and woods
- I love the small town community vibe, the agriculture and nature. It's a great place to live!
- Being a member of a close knit community
- Being outdoors in nature
- People are always kind. I don't think bringing in commercial development is a good idea. Keep it small but attract people to come shop. Maybe encourage more Amish and Mennonite vendors which would attract weekend people. And keep Facebook page updated.
- At-large services available
- Rural living
- Quite
- It is close to everything but outside of the city limits so-it is more quiet and safe.
- Like the rural natural setting
- Living
- I feel safe. The schools are amazing. A strong sense of community.
- That you're asking me these questions
- Diversity of housing and landscape and things to do. Great communities.
- Tax dollars are fair let's keep it that way don't waste money fix what we have.
- Security safe place to live



- Feeling of comradeship
- Friendly and safe
- Comfortable living
- The people
- A safe community.
- Mostly safe area with shopping close by.
- Down to earth people
- Rural feel
- It's a well kept, friendly area.
- People. Trying to improve. Prefer small communities.
- I feel our township is run quite well for its size.
- Friendly people, not a lot of traffic usually
- Besides Personal family history, love the woods & natural environment. Thats what draws ppl here.
- everything is close (in town).
- Safe place to live.
- Lakes, and woods
- The lakes!
- Lakes,
- Close to work, peaceful most times when neighbors coming up from the city don't shoot guns all week-end. As I have 2 dogs that shake like a leave every time they hear the loud noises of their shooting all day long.
- Rural lifestyle. Low crime rate.
- The people are friendly
- Nice people
- Everything! The road Commission does an excellent job, the senior center and activity center is also very nice, the fire department is awesome, the garden club and the other groups that keep the area looking so nice are just awesome!
- It is a rural area
- generally quiet
- Close family atmosphere.
- The lakes
- Wildlife
- Everything we need is so close, it's quiet in the winter and quiet on weekdays in the summer except for mudjam which we can do without, please make them shut that awful music down at a decent time.
- Mix of ag land and woods.
- I like the the community has a healthy mix of local/full time residents and part time residents and that township strives to serve everyone
- The lakes
- Love the slower pace. Would love to retain that while providing services year-round and activities for tourists.
- The community helping each other and businesses helping the community.
- People
- I live and work here. I can travel to areas to get what I need.
- Like the pace not to crowded and don't want a fast race with a lot of extra attitude.
- Lakes

- Churches that work together to minister to the people in the area. It's a close knit community even though there are plenty of people I don't know.
- Safe family community. We have made many friends since buying our place on Long Lake. Great neighborhood.
- Small Town
- Great community living with so many lakes
- The people and the lakes!
- Lakes
- love the boating and outdoor recreation
- The lakes!
- Living on the lake.
- Quiet, friendly
- Sense of community
- The people that live here
- The privacy
- It is rural and country but has everything a person needs to relax or be entertained.
- The lakes
- Small towns, mostly friendly people, recreation opportunities.
- The natural beauty.
- Long Lake
- Great staff, body's of water
- Love long lake
- Close community
- Quiet, safe area.
- I like where I live, BUT we need more stores like Aldi's, Menards, Walmart , sit down restaurants with good food.
- Location
- Quiet, but handy to town
- Small community lake property is still a good value
- Small town feel with friendly people.
- Location
- Small community with friendly businesses.
- Great area with plenty to do with the lakes , rivers and trail system.
- The quiet
- Lakes
- The people
- Trails and lakes
- The area the lakes and being away from traffic.
- Small community
- Love the area. Friendly people. Not rushed.
- Small community
- Don't really know been leaving area for a while for fun or vacation
- Pickleball facilities
- Not much crime. Let's keep the population in check.
- Lakes and Hale
- The twp is not intrusive.
- The lakes and wildlife.

- Lakes.
- The community center Friendly workers in the first township offices The library Oh, we do need a place for people to make copies at
- Quite
- Piece and quiet in the evening.. not aot of traffic., friendly community..
- Small town, natural oriented
- The people and quiet sometime
- Most people are friendly
- Joe (at the dump) does an exceptional job. Bob's Auto is dynamite for service and knowledge ! The flowers planted all around. The street lights that keep the city bright !!
- We love the family atmosphere and that's the reason we spend the whole summer here. A sledding hill would be a great addition for winter fun.
- Community very friendly
- Time to change,Term limits
- Friendly people. Transfer station. Variety of recreational activities
- Loon bike path
- The Victorian, one of the nicest businesses in town, in appearance as well as customer service. Do It Hardware is also a nice establishment. We like the fact that we are living in the country, but yet have access to stores when something is needed, but items are a bit pricey.
- Peace and quiet.
- Small town community with a conservative-minded school system that helps to keep the new world thinking and perspective of what is right and true. The area has a lot to offer in most situations concerning all things recreational.
- The kind and helpful people that work at our township office. The great teachers we have at our school. Great place to raise your children. The garden club does an awesome job at making our town beautiful. It takes a village to raise a child, Plainfield Township is that village.
- Great small town community, with room for good developments but at a small town feel
- less people
- The open waste dump and the way it is run.
- Some good people live here.
- I've lived here my entire life. 35 years. Graduated from here and now have three kids of my own attending. Hunting and fishing is amazing, the people are wonderful.
- Friendly area with beautiful lakes.
- Along with the businesses and outdoor opportunities, the people who live there full and part time are its biggest asset.
- The natural attractions. The forests, lakes, rivers. Wildlife and the natural beauty.
- The lakes. The Baptist Church
- The people!
- Quiet
- Quiet open country.
- the abundance of available outdoor recourses
- quiet, low key
- 8:00 a.m. Monday morning. And church on Sunday or Saturday.
- Location
- The calmness of living

- Wild life and nature. Loon Lake is beautiful. Don't destroy it with countless overcrowded houses. The elected officials are knowledgeable, professional, and helpful. The Plainfield County Refuge Area is well run and flexible. There are thriving business that give you some choice for shopping.
- Lakes
- The ability to drive a vehicle on a back road and not see another vehicle for many miles.
- Great Supervisor
- Lakes and Ausable River
- The people!
- woods Lakes
- The friendly people and the opportunities to enjoy nature and the water. Our family has been on Long Lake for 70 years. I guess that speaks for our love of the area.
- small town living.
- I've been coming here my whole life for summer weekends so I guess nostalgia
- Clean lakes
- Upnorth friendly attitude!
- How clean and well kept u the public areas and streets are.
- Lakes and nice people.
- My cottage
- The Long Lake community and Kathy Jane's Unique Boutique
- Lakes and natural areas
- Library, fun on the lake, Hiking and walking
- Nice area with nature all around.
- Hometown feel and beautiful lakes
- Lakes rivers
- The lakes
- Township has kept its rural and recreational identity without becoming too touristy.
- The friendliness of the people. Always bacon. Kathy Jane's. The guy at the dump that goes above and beyond!!
- Great community. Beautiful lakes. Hometown country feel.
- Friendliness of residents.
- Friendly people
- How cleaned up of seaweed Long Lake seems to be.
- Country feel
- I love the way the streets are decorated. it feel so home like. very welcoming
- Long lake.
- Lakes
- Small town community feel
- I love the quiet, rural, undeveloped nature of our township. It is peaceful, beautiful and lots of gorgeous lakes for swimming and fishing. Development/more housing units should be avoided.
- Quiet and peaceful
- Clean community
- Being a very rural area
- Long Lake
- The quietness of the town

- Very friendly and helpful community. Never a bad experience in dealing with any of the businesses.
- Getting away from the bustle of the city....the lakes and leisure.
- The dump and Hale Hardware
- Love the lakes, the small town feel, and the people.
- We enjoy the lake and the fact that there is 2 grocery stores and hardware readily available if needed. Cottages are close but not over crowded and people are respectful and friendly. The whole community works as one
- Small community. Offers almost every outdoor activity you can find in northern Michigan. Not overcrowded other than holiday weekends on lakes and trails can get a little scary. I'd like to see speed limits on roads better enforced. Also like to see ORV laws enforced or trails increased in width to support all of the 50" plus side by side users.
- Eagle point plaza recreation is fabulous for a community this small
- Community
- Love Long Lake. My cottage has been in our family for over 80 years and will be forever,
- the people and the pace of life
- Small town feel with some local amenities
- The municipality seems to open to growing and progressing. Unsure if the local residents feel the same. They like the tourist dollars but seem unwilling to be more accommodating. Some have shorter hours or are closed on holidays.
- The lakes and nature.
- Friendly People
- The people
- Lakes
- Quiet, simple life.
- I love it here. It's away from the crazy city. It has beautiful sunsets. I love the wild life. I'm the one person that doesn't want more commercial buildings in here taking up the land. I'm not wanting more people here. Traffic is terrible getting here. In this case, less is best.
- Our family parents bought a cottage 66 years ago. The five siblings all have homes on the lake. Now the cousins are purchasing property. This is and has been an area we have always called HOME! 😊❤️
- The dump is efficiently run.
- People
- The people are friendly. The community has a small town feel.
- Small town feel. Lakes
- ruralness and lack of crime
- Small town charm
- nature
- The people
- Small town friendly community
- Always treated kindly and respectfully at township hall.
- The small town atmosphere.
- Small town
- Small town, rural living
- The rural non city life it offers.
- Rural and Small Town Feel

- Our property--10 wooded acres on a pond, nice getaway--good accommodations, peace & quiet, wildlife. Good, neighborly, sufficient homeowners association. Beautiful Lake Huron is < an hour drive away. Good friends are nearby on AuSable lake. I can see a zillion stars on a moonless night!
- The lakes
- The small town community that we have is awesome. I also love the waste station, it's a great service.
- It's mainly rural, small towns, and the Hale hardware store is fun to shop at.
- The wonderful people
- The wonderful people
- We like the "laid back" style of our Township government.
- Nature, less traffic, friendly people
- Quiet, less traffic
- All like family
- quiet
- Familiar people and friendliness
- lots of opportunities to be active good facilities
- Small, quiet community
- small quiet community
- Small town feel
- Friendly and beautiful flowers!
- Small town with all the basic amenities, rural character, low traffic
- country atmosphere
- Lake and nature areas
- Sense of community.
- Great place to live
- Multiple boating, fishing and hunting opportunities, Lake Huron in close proximity.
- Building Dept.
- community - people
- Patrick Reddy - Nice guy!
- Small town setting
- it's quiet
- peace and quiet
- local people
- I like small town living.
- quiet during winter
- the quiet community life
- small town atmosphere
- sense of community
- great people
- recreational area
- environment, friendliness
- peaceful and friendly residents
- friendly community and business

**24. What is one thing you would do to improve Plainfield Township over the next five to ten years?**

**Common Responses:**

- **Businesses/ Restaurants**
  - **Roads – improve**
  - **Blight**
  - **More trails, sidewalks, bike lanes**
  - **Pool- need**
  - **Pickleball**
- 
- Fill a few of the potholes on Kokosing Rd.
  - Dinner restaurants, besides barbecue, pizza, bar food. Summer family friendly entertainment. Art Fairs. Thriving Farmers Market. Summer recreation programs for school age kids. More food trucks. Small business storefronts filled and thriving.
  - Tear down blighted buildings to improve the look of our community
  - Bring in more money from business and tourism without sacrificing our rural identity
  - I would say enforcement of blight.
  - Real estate signs are distracting and an eye sore on every street corner.
  - Bike paths and speed bumps or flashing signs to slow drivers down around the lakes
  - Expand the market. Have special events to draw in revenue.
  - Continue the road maintenance schedule. Address blight.
  - Establish a police force
  - Have a couple of times a year. For junk pick up. And pick up leaves in the fall
  - Protect parks and green space. New builds in homes or business need to plant trees and shrubs as part of their plan. Climate protection will save our lives on the planet and keep our township a great place to live.
  - Better roads,
  - Blight, Blight, Blight. These yards NEED to be cleaned up. Junk cars, old appliances. Horrible looking yards.
  - Improve the blight enforcement especially in residential subdivisions and around lakes.
  - Get rid of blight, too many junk cars around. Example; corner of webb and towerline has a hidden junkyard. Farm on webb/long lake road is a huge eyesore looks like another unlicensed junkyard
  - Strong development plan that protects our natural resources yet maintains businesses & facilities to support a growing (and younger) community/tourist base.
  - i just wrote about it.
  - I,d like to see cleaning up of the blight be enforced. There seems to be a lot more empty buildings. Trash and junk cars.
  - Make it illegal to use pesticides, and fertilizer, around all the lakes.
  - Build outdoor pickleball courts with bathroom facility.
  - Pickleball courts, bike lanes, public restrooms at pickleball courts, more restaurants, hotel, Meijer,
  - Have some speed control on side roads to slow traffic down going to the dump on dump days,
  - Scenic and safe bike trails off roadways. Outdoor pickleball courts.
  - The quality of the roads

- Less travel trailers around West Londo Lake. Starting to look like a run down trailer park. I am sure there is an ordinance that is in place but who will enforce it. I think its a case of too many family and friends that are left to do what they want!!!
- Need more businesses
- Slow the speed limit down to 55 on m-65.
- Bring new life into the town, The regular are so stuck on keeping the town small that they kick out all new growth so the town can't grow. Also they need new blood in the government if that is to happen!!
- Health care clinic
- Better enforcement of building codes.
- Sidewalks and a few more restaurants
- Hale needs a bar restaurant, tim hortons or dunkin donuts
- The one thing that I dislike the most about our township is the amount of blight. I hate looking at it every day and feel it is an embarrassment to our community. We can definitely do much better.
- Bring in more restaurants, bowling or another activity for families, add outdoor and indoor pickleball facility. Add a great fitness center
- Approve more small to medium sized businesses by inviting them to come see what the area has to offer.
- More businesses ; a police force that is in the area consistently; less drugs and crime.
- Maintain roads and boat ramps plan for local activities for full time residents.
- Bring in hotels, restaurants, apartments. Stop with the craft shows
- Whatever would attract young families, maybe job opportunities and affordable housing.
- Mosquito control.
- We need hotels or motels and or more camping areas. hand held car wash, small animal vet.
- The blight is terrible and a big deterrent to more upscale housing. The home on M65 near Kokosing are a HUGE eyesore. The home across from the Long Lake Bar is disgusting and looks like a ghetto. The trash and junk,'overgrown lawn is a big eyesore in a prime location. People have been complaining about that place for a year. Only one small trailer of trash has been hauled away. They should be fined and penalized BIG time. More enforcement and heavy handed fines need to be levied for these places!
- a couple more restaurants would be nice.
- Term limits for elected personnel
- Keep the parks nice.. free from litter.. etc
- Reduce crime.
- Non chain restaurants. Full service local owned restaurants
- Sit down family restaurants would be nice, and not the same types of food. Everyone serves pizza, sandwiches and wraps, salads, burgers. Some nice home-cooked food would be great. We go to Rogers deli for that! But they're not open in the evenings.
- Get new blood in offices...
- Health care is my primary concern as I consider retiring here.
- Again, discontinue the mud jam
- Quality restaurants/bars.
- More stores like Aldi's, Save Alot, Menards, Apple Bs, bring in factories for job opportunities.
- Adding more restaurant options



- More stores, restaurants, industry
- Enforce the blight ordinance. More entertainment for kids.
- I would work to improve relations between the township supervisor and board with lake property owners. From what I see it is one side versus the other. If the township is going to be improved then all parties whether voting or not should have a voice.
- Expand business tax base to bring quality jobs for residents.
- More improvements too back streets, (cleaning ditches and cutting brush from roadways) Graveling where needed, specifically Birch Lane and Maple view off of Ponderosa Dr. Both of these roads have been neglected for too long.
- Increase number of businesses
- Have more things for family's to do together. Not just another bar or restaurant. Open public pool, game room, movie theater etc. make bike paths farther in and out of town and have local business put out bike racks out to lock them up.
- Remove blighted dwellings
- More businesses such as grocery stores, movies, restaurants, hardware stores, quick food stores, etc...
- Ned a gas station at Long Lake
- Bike trails or bike lanes. Have road commission not plow so far of the shoulder so I e can get snowmobiles to the trail heads and back and forth to gas and food areas while snowmobiling. Maybe if we have a bike lane the county could not plow the bike lane to keep some snow on the shoulder.
- Less blight more parks and easier access to walk and bike around lakes
- More transparency as to township government and goals for 5 years
- Pool for the gym.
- Clean up the blight and treat everyone the same.
- Have dances car shows bands and nice family interEntertainment
- More family oriented parks , walkways. Promote area businesses.
- More doctors and restaurants
- Allow dispensaries to open in order to generate revenue and jobs.
- Increase allotment for keeping up with garbage and latrines.
- Improve the quality of the lakes and rivers.
- Playground equipment at Londo Lake park More time and facilities for pickleball
- Longer business hours
- Fast food...stores with discount/reasonable prices. Family dollar has become so over priced....full service restaurant open for dinner....motel.. Nice apartments that are affordable not assisted living...
- The lakes
- Slow the speed limit down from Old state to towerline on 65 to 45mph
- Motels for family and friends to stay when visiting
- Get your head out of the sand, and address the rapid drug problem!
- Having affordable housing for the elderly an handicap family with children.
- Term limits
- More involvement take concern over area
- Tick/mosquito control
- More rental housing
- Pave Towerline Road!!! From Slossan Rd to the Garbage Disposal at least. Winter and spring months are brutal on cars. Tear down all the dilapidated buildings, especially if

they are not being used for anything, makes the township look pretty scummy (north out of town). Order people to clean up their garbage and junk in their yards.

- Slow down traffic on M-65. Speed limit is set too high. Slow down and enjoy the scenery.
- Try to attract higher paying job availability so graduates who wish to stay around town they have an opportunity to do so and thrive in a work related field.
- More for the kids to do, of all ages.
- Previously answered
- clean up blight
- PROVIDE A BOAT CLEANING STATION AT ALL MAJOR BOAT RAMP SITES.
- Keep it clean and fresh and a lot just happens because of that. Awesome job on the flowers and main street maintenance!
- Commercial services.
- Having outside Pickleball courts would be a positive addition. This sport continues to grow in popularity.
- Same as stated
- Common areas with facilities for year round group activities for the family young and old.
- More downtown buildings. A real downtown.
- Better boat launches.
- Rural road improvements—tar and chip dirt residential roads
- Improve roads!
- Do something about empty buildings and blight. Blight is bad on the edges of Hale. I think the mud event gives us a bad name too. We say we live in Hale and people other places think we are crazy.
- Add trash and recycle pickup
- improve on a moderate scale of economic growth and diversity.
- Lower taxes
- Improve the dirt side of Shellenbarger Rd. Many people live year round and more would if it was paved. The other side is paved. This road is terrible and it's a poor excuse for the gravel road which my property record contends.
- hotels and motels, rv park, car and boat wash, law enforcement, ems service, jobs, rentals
- Ask the State highway department to change the suggested speed limit signs on M-65, near Rollways Road from 60 mph to 50 mph.. Two people have died there in traffic accidents.
- Stores
- Get rid of blight run down properties junk cars parked trash not taken care of
- Have the town ship work on supporting law enforce the DNR & Police follow up on weekend.
- Eliminating the number of junked/wrecked cars visible to the roadways.
- Less political signs that are divisive
- More food and entertainment options
- Roads
- Need more restaurants!!
- Add more entertainment places for older kids to hang out at.
- Add child friendly activities and better restaurants.
- Keep the lakes clean.
- Restaurants and shopping

- Add more trails like Loon Lake Nature Park, bike friendly shoulders on roads, improving health and safety for all residents.
- More opportunities for outdoor activities, especially in the Winter
- Get a vision to work better with the school. They can be a big asset if township leadership gets off the high horse and works with them.
- Would like to see some diversification of restaurants (there's like 6 pizza joints in Hale) and some entertainment options in town. I love supporting the community but there's not a whole lot to do in town
- Natural gas for Every area. Take care of all the blight. Bike path around long lake.
- More job opportunities.
- Add walking paths.
- More option for shopping. Fashion. Craft stores. Outdoor dining. Farm to table restaurant.
- Roads
- Better roads...
- Keep all the lakes clean and stocked.
- I would like to be able to pay my property taxes online
- More commercial in Hale and south branch
- Add more bike and walking paths around lakes
- More bike paths, more jobs with benefits to keep young adults in the area
- Create more nature/bike trails.
- Roads
- Grocery store options
- Improve and publish information of the building code. Treat all residents equally. Enforce above .
- More restaurants
- McDonald's
- More kids activities
- The slower pace of growth is more relaxing as you can get away from all the hustle and bustle. The various entertainments that are offered is a huge attraction for most.
- Upgrade the appearance....standards and protect the investment we have all made in our property. Implement stronger zoning and upkeep of property standards. Rural is good....junky is bad!
- Better grocery store, more Sunday business hours, improve fishing.
- Up size the dump
- Improve the hours at the dump. We end up hauling garbage home in our car almost every time we are up there. The Sunday hours need to be later than 2. Maybe shift the early close to a different day. We pay for a service that we can't use.
- The teens need things to do if they aren't in 4 H or something else maybe since there are soo many lakes create a training program to get them involved in maintaining and helping improve the various parks, launches , public beaches , trails . Teach them to value the beauty around them and keep it that way
- As mentioned in last comment - ORV trail system either enforce 50" max or accommodate it. Gas and restaurants in this trail network could be a nice addition. I would think it would bring a significant increase to the tourism industry, gas/restaurants, dealerships and repairs/services to support. Northern Michigan has one of the best networks of ORV trails, but lacks the infrastructure to support it. Other states like West

Virginia and Tennessee have done very well by embracing this and bringing jobs, and money into their economy. Why does north Eastern Michigan seem to suffer and north west so much more popular? We have all or more of the same outdoor experiences to offer with exception of downhill skiing. Yet, most town from port Huron all the way north are half boarded up? The one exception is Tawas, which is a great downtown area to visit, shopping, dining, etc. Hotels and tourism may be good, but need the attractions to support the need. Or even campgrounds and rental cabins. Most of the great little rental/hunting cabins seem to be a thing if the past in this area. Why hasn't this region capitalized on the growth of canoeing or more specifically kayaking and mountain biking?

- Playgrounds
- Diversification to retain younger population
- Stay ahead of our weed problem.
- clean up some of the business areas in Hale business district. They are kind of messy. Paint, sidewalks, flowers.
- A couple of local sit down restaurants (not chains)
- I would like to see Township leadership more accessible and approachable. Say what you mean and mean what you say. Results are gold.
- Lakeside property designations. This has been a long time issue and the township should be involved. The township benefits greatly from the tax revenue and seasonal resident's purchasing power in restaurants, local stores and bars. The township is quick to accept the revenue generated, but not in a rush to assist those seasonal tax payers with any "uncomfortable" situations. Since seasonal residents cannot vote, they have to live with what is decided for them or move.
- Add more walking/biking trails
- Lower property taxes
- Same as above
- Better medical care facility
- Add additional seasonal business in downtown Hale to employ local families. Add the bike/walk path around Long Lake, advertise Lumberman's monument and Ausable River's beauty.
- More business diversity.
- Add bike lanes on paved roads
- There needs to be walking/bike paths. It's actually gotten dangerous to drive around Long Lake on Saturday mornings with all of the pedestrians on the roads for both drivers and people exercising.
- Bike path around the lakes. Especially Long Lake
- better choice of foods at the grocery stores, especially fresh fish.
- Don't roll up the sidewalks so early
- more local dinning
- Discourage the bringing in of non resident boaters who do not clean their boats before launching
- More places to shop and eat
- Fight to get the speed limit reduced and enforced from Curtis Road in the south and to an appropriate spot to the north. I walk and bicycle along M65 and feel very unsafe doing so.
- Have additional small shops like Kathy Janes.

- Plant more trees or gardens around the main town, esp by the fairgrounds.
- Don't cut down any timber, or limit it more. And make sure harvested areas are immediately replanted! Like the tract on Rollways Road--harvested years ago and never replanted. Shameful.
- Movie theater
- Community programs and classes geared toward healthier living and community
- Fill empty shops in hale with new business
- Invest in promoting a healthy lifestyle by offering more opportunities for recreational activities, including in investing more into the Eagle Point Plaza such as good quality workout equipment and tv's and room improvements.
- Invest in promoting a healthy lifestyle by offering more opportunities for recreational activities, including in investing more into the Eagle Point Plaza such as good quality workout equipment and tv's and room improvements.
- Tennis Courts
- Pave or grade the mud roads
- Paved roads & natural gas
- Keep improving parks and getting people involved
- slow traffic down on 65
- Parks and Recreation activity
- more trails bike/hike
- get rid of gypsey moths in entire township
- More business and medical services in Hale please.
- Pickleball courts!
- -More recycling (plastic bags, electronics, batteries) -More restaurants or carry out opportunities -More vendors/people at Farmer's Market with consumable/food like fudge, cheese
- consider building senior housing, not assisted living
- Sign clutter on street corners.
- Utilize empty buildings you have now
- Try to utilize empty buildings
- Add bike paths
- -Outside pickleball courts -Building of senior subdivision or condos
- Pavilion at Twp. park
- More community involvements with the police and fire personnel in the form of an annual dinner and ball, pancake breakfast for needed safety equipment.
- leadership, term limits
- People following the rules! Do not give into people who exercise... "Ask for forgiveness before permission"
- nothing has changed since the last township survey, so we need new township leadership
- consistent grading/dust control on Towerline
- update restroom improve handicap accessibility
- the blight control
- better accessibility to healthcare
- upscale business, keep area pristine and beautiful
- restaurant availability
- eliminate blight

- Blight properties being eliminated. Fined for excessive garbage or junk piling up. Not pleasant to drive by and see.

**APPENDIX C**  
ADOPTION DOCUMENTS

**DRAFT**